

Firestop Systems and Construction Chemicals

Hilti. Outperform. Outlast.





Firestop sealants and sprays

| | |
|---|----------|
| Elastomeric silicon sealant CP 601S | Page 155 |
| Flexible firestop sealant CP 606 | Page 156 |
| Firestop sealant CP 611A | Page 157 |
| Intumescent firestop sealant FS-One MAX | Page 158 |
| Firestop joint spray CFS-SP WB | Page 159 |



Firestop coating system and mortar

| | |
|-------------------------|----------|
| Firestop mortar CP 636 | Page 160 |
| Firestop coating CP 670 | Page 161 |



Firestop wrap and foam

| | |
|------------------------------|----------|
| Firestop wrap stirp CP 648-E | Page 162 |
| Firestop foam CP 620 | Page 163 |



Construction chemicals filling foam

| | |
|-------------------|----------|
| Filling form CF-F | Page 164 |
|-------------------|----------|



Accessories

| | |
|--|----------|
| Accessories for firestop sealants and firestop foams | Page 165 |
|--|----------|

Elastomeric silicone sealant CP 601S



Applications

- Expansion or stretched-connection joints in fire compartment walls and floors
- Non-insulated pipes in penetrations through fire compartment walls and floors
- Acoustic insulation of pipes

Advantages

- Weather and UV-resistant
- Excellent movement capability
- Smoke, gas and water-resistant



British Standard
BS 476-20

| Technical data | |
|---|---|
| Chemical basis | Neutral elastic silicone |
| Base materials | Masonry, Metal, Concrete, Glass |
| Tested in accordance with | UL 2079, ASTM E814, ASTM E1966, CAN/ULC-S115, UL 1479, ASTM E84 |
| Movement¹⁾ | ± 25% (ISO 11600) |
| LEED VOC | 3 g/l |
| Can be painted | No |
| Approx. curing time²⁾ | 2 mm/3 days |
| Intumescent | No |
| Application temperature range | 5 - 40 °C |
| Storage and transportation temperature range | 5 - 25 °C |
| Temperature resistance range | -40 - 160 °C |
| Colour | White / Grey |

¹⁾ according to HTC 1250

²⁾ at 75°F/24°C, 50% relative humidity



| Ordering designation | Volume per unit | Packaging | Sales pack quantity | Item number |
|----------------------|-----------------|-----------|---------------------|-------------|
| CP 601S 310ML grey | 310 ml | Cartridge | 1 | 310635 |
| CP 601S 310ML white | 310 ml | Cartridge | 1 | 310633 |

Flexible firestop sealant CP 606



Applications

- Sealing rigid or low-movement ceiling/wall joints, widths from 6 to 30 mm
- Sealing cable tray penetrations
- Sealing metal pipe penetrations
- For use in various base materials such as masonry, concrete, drywall and metal

Advantages

- Paintable
- Good adherence without primer
- Easy clean up with water
- Smoke, fume and water resistant
- Tested for 500 cycles with up to 33% movement in accordance with UL 2079 and ASTM E1966
- Meets LEED™ requirements for indoor environmental quality credit 4.1 Low Emitting Materials, Sealants and Adhesives and 4.2 Paints and Coatings

Technical data

| | |
|---|---|
| Chemical basis | Water-based acrylic dispersion |
| Base materials | Concrete, Masonry, Drywall, Steel |
| Tested in accordance with | UL 2079, ASTM E814, ASTM E1966, UL 1479, CAN/ULC-S115 |
| Movement¹⁾ | ±12.5% (ISO 11600) |
| LEED VOC | 75 g/l |
| Can be painted | Yes |
| Approx. curing time²⁾ | 3 mm/3 days |
| Intumescent | No |
| Application temperature range | 5 - 40 °C |
| Storage and transportation temperature range | 5 - 25 °C |
| Temperature resistance range | -30 - 80 °C |
| Colour | White / Grey |

¹⁾ according to HTC 1250

²⁾ at 75°F/24°C, 50% relative humidity

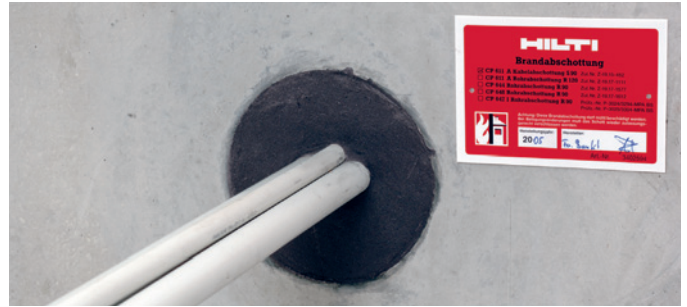
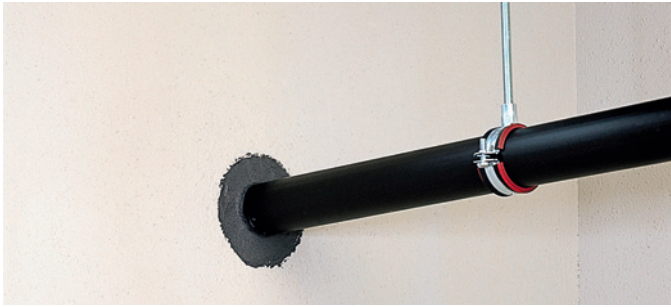


British Standard
BS 476-20



| Ordering designation | Volume per unit | Packaging | Sales pack quantity | Item number |
|-----------------------|-----------------|-----------|---------------------|-------------|
| CP 606 310ml INT grey | 310 ml | Cartridge | 1 | 209630 |
| CP 606 310ml white | 310 ml | Cartridge | 1 | 209625 |

Firestop sealant CP 611A



Applications

- Single cables and cable bundles
- Plastic pipes ≤50 mm (2") without additional collar
- Small openings

Advantages

- Paintable
- Fast, easy application and cleaning up
- Particularly suitable for laying new cables
- Silicone-free



British Standard
BS 476-20

Technical data

| | |
|---|---|
| Chemical basis | Water-based acrylic dispersion |
| Base materials | Concrete, Brick, Masonry, Metal, Gypsum |
| Tested in accordance with | UL 1479, EN 1364-4 |
| Movement¹⁾ | No |
| LEED VOC | 56 g/l |
| Can be painted | Yes |
| Approx. curing time²⁾ | 3 mm/3 days |
| Intumescent | Yes |
| Application temperature range | 5 - 40 °C |
| Storage and transportation temperature range | 5 - 25 °C |
| Colour | Anthracite |

¹⁾ according to HTC 1250

²⁾ at 75°F/24°C, 50% relative humidity



| Ordering designation | Volume per unit | Packaging | Sales pack quantity | Item number |
|----------------------|-----------------|-----------|---------------------|-------------|
| CP 611A INT | 310 ml | Cartridge | 1 | 220351 |

High performance intumescent firestop sealant FS-ONE MAX



Applications

- Effectively seals most common through penetrations in a variety of base materials
- Mix and multiple penetrations
- Metal pipe penetrations
- Insulated metal pipe penetrations
- Plastic pipe penetrations
- Cable bundles and trays
- HVAC penetrations

Advantages

- One product for a variety of common through penetrations
- Cost-effective and easy-to-use solution
- Water base and paintable
- W-rated systems available
- Ethylene glycol-free
- Industry leading VOC results
- Convenient multi application firestop solution for penetrations

Technical data

| | |
|---|--|
| Chemical basis | Water-based acrylic dispersion |
| Base materials | Concrete, Masonry, Drywall |
| Test in accordance with | ASTM G21 ASTM E 90 CAN/ULC-S115 UL 1479 ASTM E 814 ASTM E84 |
| Approx. cure time¹⁾ | 4 mm / 3 days |
| Application temperature range | 41°F to 104°F |
| Temperature resistance range | -4°F to 212°F |
| Storage and transportation range | 41°F to 77°F |
| Shelf life²⁾ | 12 Months |
| Colour | Red |
| Mold and mildew performance | Class 0 (ASTM G21-13) |
| Mold and mildew resistant | Yes |
| Surface burning characteristics (ASTM E 84-14) | Flame Spread: 0 Smoke Development: 10 |

¹⁾ At 75°F (24°C) and 50% relative humidity
²⁾ from date of manufacture



| Ordering designation | Volume per unit | Packaging | Sales pack quantity | Item number |
|-----------------------|-----------------|-----------|---------------------|-------------|
| FS-ONE MAX 5 Gal Pail | 19000 ml | Pail | 1 | 2101536 |

Firestop joint spray CFS-SP WB



Applications

- Sealing openings between the tops of walls and concrete metal floor decks or ceilings
- Sealing building perimeter gaps between floor slabs and exterior curtain wall facades

Advantages

- Water-based, low VOC, contains no halogens
- High degree of elasticity - movement capability of up to 50%
- Excellent sprayability and low slump characteristics
- Fast, efficient sealing of wide, difficult-to-access joints
- Quick and easy installation with airless sprayer can help save time and money
- Both sprayable and brushable



British Standard
BS 476-20

Technical data

| | |
|---|---|
| Chemical basis | Water-based acrylic dispersion |
| Base materials | Concrete, Masonry, Gypsum, Steel, Aluminium, Glass |
| Tested in accordance with | UL 2079, UL 1479, ASTM E84, ASTM E2307, ASTM C1241, ASTM G21, ASTM E90, ASTM E1966, CAN/ULC-S102, CAN/ULC-S115, ASTM E814, EN 1364-4, EN 1366-4 |
| Movement¹⁾ | Up to 50 % |
| LEED VOC | 34 g/L |
| Can be painted | Yes |
| Approx. curing time²⁾ | 3 mm/day |
| Intumescent | No |
| Application temperature range | 4 - 40 °C |
| Smoke resistance | Yes |
| Storage and transportation temperature range | 4 - 25 °C |
| Colour | Red |

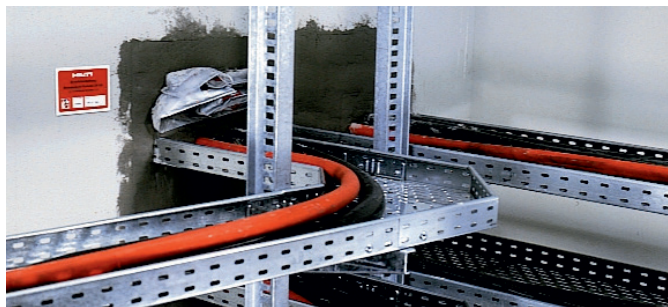
¹⁾ according to HTC 1250

²⁾ at 75°F/24°C, 50% relative humidity



| Ordering designation | Volume per unit | Packaging | Sales pack quantity | Item number |
|----------------------|-----------------|-----------|---------------------|-------------|
| CFS-SP WB red | 19000 ml | Pail | 1 | 430815 |

Firestop mortar CP 636



Applications

- Permanent firestopping of cables, cable trays, and non-combustible pipes in medium to large wall and floor openings
- Single, multiple and mixed penetrations
- Medium to large multiple penetrations in concrete and masonry in combination with other products

Advantages

- Excellent application characteristics
- Easy to install with trowel or commercially available pumps thanks to adjustable consistency
- High yield Stiff (forms not always required)
- Contains no asbestos, phenol or halogen constituents
- Good adhesion to steel, concrete, and masonry



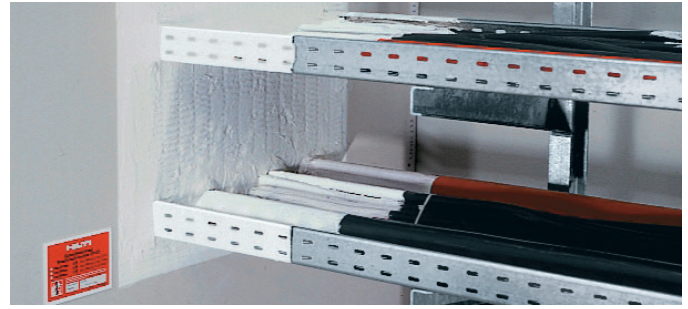
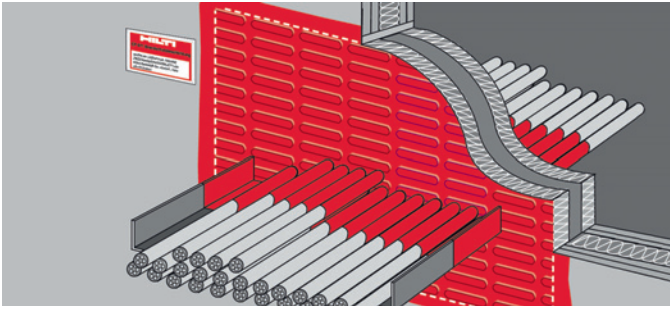
British Standard
BS 476-20

| Technical data | |
|---|-----------------------------------|
| Base materials | Concrete, Masonry |
| Approx. mix ratio | 2.5:1 (mortar to water by weight) |
| Intumescent | No |
| Max. compressive strength after 28 days | 2.9 N/mm ² |
| Re-penetration | Possible |
| Application temperature range | 5 - 80 °C |
| Reusable (and removable) | Not possible |
| Setting time (approx.) | 10 h |
| Fire rating | See Approvals |
| Working time (approx.) | 45 min |
| Temperature resistance range | -10 - 80 °C |
| Colour | Grey |



| | | |
|----------------------|---------------------|-------------|
| Ordering designation | Sales pack quantity | Item number |
| CP 636 20KG | 1 | 334897 |

Firestop coating CP 670



Applications

- Permanent firestopping of blank openings, cables, cable trays, non-combustible and combustible pipes in medium to large wall and floor openings
- Ideal for large openings

Advantages

- Solvent- and silicone-free
- Fully functional immediately after installation
- Smoke tight



British Standard
BS 476-20

Technical data

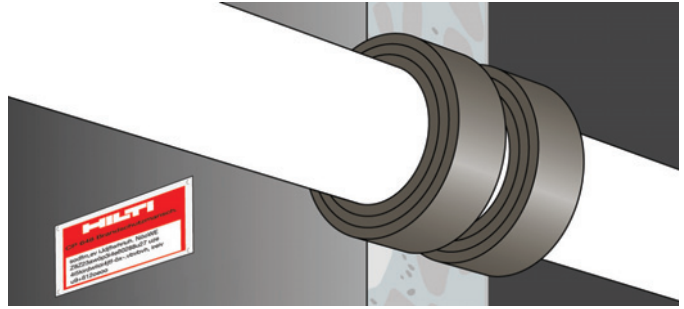
| | |
|---|----------------------------|
| Base materials | Drywall, Concrete, Masonry |
| Intumescent | No |
| Re-penetration | Possible |
| Application temperature range | 5 - 40 °C |
| Reusable (and removable) | Not possible |
| Fire rating | See Approvals |
| Temperature resistance range | -40 - 100 °C |
| Storage and transportation temperature range | 5 - 30 °C |
| Acoustic insulation | Yes |
| Approvals | BS 476-20 |
| Approx. curing time¹⁾ | 1 mm/day |
| Colour | White |

¹⁾ at 75°F/24°C, 50% relative humidity



| Ordering designation | Volume per unit | Packaging | Sales pack quantity | Item number |
|----------------------|-----------------|-----------|---------------------|-------------|
| CP 670 6kg | 4000 ml | Pail | 1 | 376023 |

Firestop wrap strip CP 648-E



Applications

- Combustible pipe penetrations

Advantages

- Quick and easy closure without need for tools
- Easy to cut
- Fast installation
- Maximum flexibility



British Standard
BS 476-20

Technical data

| | |
|---|---|
| Base materials | Concrete, Drywall, Masonry |
| Expansion temperature (approx.) | 210 °C |
| Intumescent | Yes |
| Storage and transportation temperature range | -5 - 50 °C |
| Application temperature range | -5 - 50 °C |
| Temperature resistance range | -20 - 100 °C |
| LEED VOC | 3.1 g/l |
| Complementary products | CP 606, CFS-S ACR, CP 620, CP 636, CP 633 M10 |
| Acoustic insulation | Yes |
| Can be painted | No |
| Colour | Grey, printed foil |

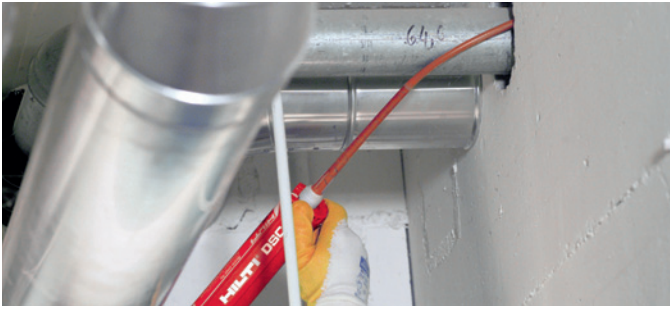


Ordering designation
CP 648-E 1,75" x 33'

Sales pack quantity
1

Item number
304309

Firestop foam CP 620



Applications

- Concrete, drywall and masonry
- Multiple and mixed penetrations
- Single cables, cable bundles and cable trays
- Metal pipes

Advantages

- Innovative firestopping solution for complex applications and in difficult-to-reach locations
- Virtually impervious to smoke
- Excellent water and vapour resistance
- Bacteria resistant
- Easy to use in openings where access is poor



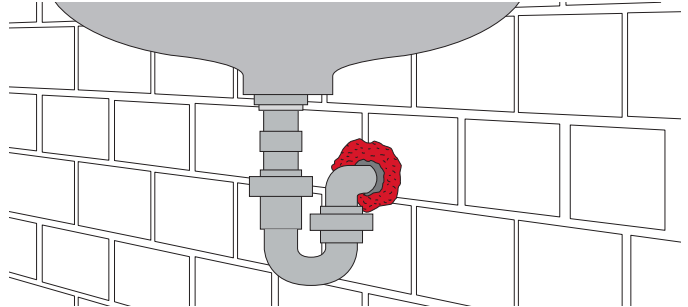
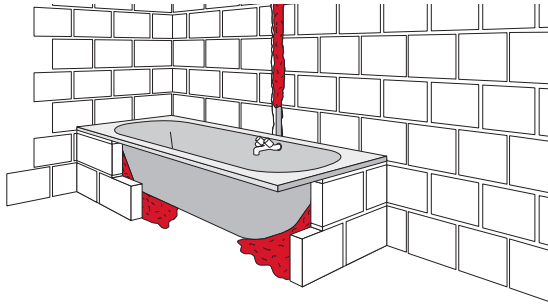
| Technical data | |
|--|---------------------------------|
| Approvals | P-3659/3470-MPA BS,Z-19.15-1353 |
| Foam yield (up to) | 1.9 l |
| Intumescent | Yes |
| Tested in accordance with | UL 1479, CAN/ULC-S102 |
| Approx. tack-free time (at 23°C / 50% rel. humidity) | 35 s |
| Approx. cut time (at 23°C / 50% rel. humidity) | 2 min |
| Fire rating | See Approvals |
| LEED VOC | 1.3 g/l |
| Storage and transportation temperature range | 5 - 25 °C |
| Temperature resistance range | -30 - 100 °C |
| Application temperature range | 0 - 40 °C |
| Colour | Red |



| Ordering designation | Volume per unit | Pakaging | quantity | Item number |
|----------------------|-----------------|-----------|----------|-------------|
| CP 620 | 300 ml | Cartridge | 1 | 2025083 |

Firestop Systems and Construction Chemicals

Filling foam CF-F



Applications

- Gaps and cracks
- Drywall voids
- Gaps or cavities for electrical fittings
- Backfilling for sealants
- Holes left by concrete forms
- Filling gaps

Advantages


- Easy to use - finger dispensing
- High adhesive strength
- Stops air infiltration

| Technical data | |
|--|--------------------------------------|
| Approx. density | 25 kg/m ³ |
| Foam yield (up to) | 34 l |
| Approx. cut time (at 23°C / 50% rel. humidity) | 30 min |
| Min. time before loadbearing | Approx. 3-5 h |
| Application temperature range | 5 - 30 °C |
| Temperature resistance range | -40 - 80 °C |
| Content per can/cartridge | 750 ml |
| Colour | Manila |
| Storage and transportation temperature range | 5 - 25 °C |
| Approx. tensile strength | 0.06 N/mm ² |
| Approvals | Emission class for building material |







| Ordering designation | Volume per unit | Packaging | Sales pack quantity | Item number |
|----------------------|-----------------|-----------|---------------------|-------------|
| CF-F 750 | 750 ml | Can | 1 | 369811 |

Accessories for Foams

| Ordering designation | | CF-F | Sales pack quantity | Item number |
|----------------------|--|------|---------------------|-------------|
| Cleaner CFR1 500ML |  | ■ | 1 | 55019 |

Accessories for firestop sealants and firestop foams

| Ordering designation | | CP 601S | CP 606 | CP 611A | FS-ONE | CP 620 | Sales pack quantity | Item number |
|---------------------------|---|---------|--------|---------|--------|--------|---------------------|-------------|
| Dispenser CFS-DISP |  | ■ | ■ | ■ | ■ | | 1 | 2005843 |
| Dispenser DSC box |  | | | | | ■ | 1 | 338720 |
| Extension tube CP 620-EXT |  | | | | | ■ | 12 | 338716 |
| Mixer CP 620-M |  | | | | | ■ | 12 | 338718 |