



**HILTI**

**BEST OF INNOVATIONS.**

Hilti Innovations 07/2015

---

2 Years No Cost Service

---

TE 7-C Rotary Hammer

---

HUS-V Re-usable Screw Anchor

---

PR 2-HS Rotating Laser

---

Diamond Core Bits UCL

**Hilti. Outperform. Outlast.**

**Hilti Lifetime Service**

# OUTSTANDING SERVICES FOR A PRODUCT LIFETIME.

The unique service package for those who prefer to own their tools.

Hilti tools are built to last. But even if a defect occurs, Hilti will take care of it. Quickly and professionally, completely free of charge for up to 2 years from date of purchase. After that we continue to prove the quality of our products by putting a limit on what a repair can cost – for as long as you continue using your Hilti tool. We even give you a lifetime manufacturer's warranty against manufacturing defects. That's not just reassuring to know, it's unique in this field.

## **No repair costs whatsoever**

No cost period

Hilti tools are covered by Hilti Lifetime Service for up to two years from the date of purchase\*. This means that if your Hilti tool becomes defective or requires servicing within this period, it will be serviced, repaired or replaced at no cost to you.

This includes:

- Labor costs
- Faulty parts subject to wear and tear
- Servicing when indicated by the service indicator on the tool
- Functional check, adjustment and safety check
- Delivery charge

## **Maximum cost control**

Repair cost limit

If your Hilti tool becomes defective outside the no-cost period, high repair costs are avoided as Hilti puts an upper limit on the cost of a repair. Should the cost remain below this limit you, of course, pay only the actual cost.

- A maximum of 30% of the current list price of the corresponding new product
- Should the cost of the repair remain below the limit you, of course, pay only the actual cost
- Repair quality guaranteed: One (1) month no cost warranty after every paid repair.

## **Quality without compromise**

Manufacturer's warranty

Hilti warrants to replace, free of charge and over its entire lifetime, any Hilti tool that is defective as a direct result of a fault in materials or manufacturing.

\* Excluded is any tool not operated and handled correctly, not cleaned and serviced properly in accordance with Hilti Operating Instructions, or not repaired by an authorized Hilti service provider.

\*\* \*Tools included for the 2 Years No Cost Service are the following: Rotary hammers (TE 2; TE 7), Combihammers (TE 30; TE 40; TE 60 ATC-AVR; TE 70 ATC) and Breakers (TE 700; TE 1500; TE 3000)



<b>HILTI</b>	<b>2 Years</b>
<b>LIFETIME SERVICE™</b>	<b>NO COSTS</b>
<b>Lifetime</b>	<b>Lifetime</b>
<b>REPAIR COST LIMIT</b>	<b>MANUFACTURER'S WARRANTY</b>

## Hilti TE 7-C Rotary Hammer

# THE NO-COMPROMISE ANCHOR HOLE EXPERT.

The TE7-C's oversize hammering mechanism makes light work of even the hardest concrete.



### Highlights

- The TE7-C's generously-dimensioned Hilti hammering mechanism makes it the highest-performing rotary hammer in its class
- Unbeaten drilling performance thanks to the Hilti TE-CX drill bit generation with flute design and unique solid carbide head

### Applications

- Drilling in concrete and masonry with drill bits up to 28 mm dia. (optimum performance up to 16 mm dia.)
- Light chiseling on concrete and masonry
- Drilling in wood or steel where a high torque is required
- Drilling with the dust removal system in sensitive environments

### Advantages

- Perfectly-balanced, professional-grade tool with ergonomically designed D-grip for comfortable use over long periods
- Even greater ruggedness and longer life thanks to new casing design concept
- Chuck interface for quick interchangeability of all common chuck types
- Virtually dustless drilling with the well-proven Hilti DRS dust removal module



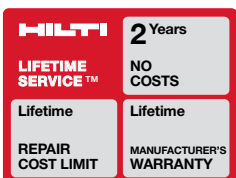
### Powerful performer.

The new front-runner in the lightweight class.

Built to take long periods of demanding drilling as well as light chiseling work in its stride, the ergonomic design and impressive impact power of this extremely rugged rotary hammer make it a true pro-grade tool of the kind you can expect only from Hilti.

### Performance data

Rated power	720 W
Speed under load (r.p.m.)	740
Hammering speed, maximum (blows/min.)	4020
Single impact energy, maximum	2.6 joules
Drilling performance in medium-hard concrete (12 mm dia.)	50 cm <sup>3</sup> /min
Weight	3.2 kg
Dimensions L x W x H (mm)	343 x 85 x 215





## Hilti HUS-V Screw Anchor

# SAFETY AND RELIABILITY

Design through-fastenings with confidence for safety relevant, light to medium duty applications. The HUS-V is the ideal solution for temporary fastening applications under cracked and non-concrete base material. 50% faster than installing a stud anchor.

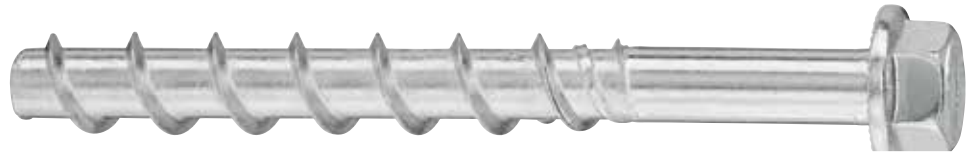


### Applications

- Temporary Safety barrier
- Support for pre-cast panel walls
- Concreting formworks
- Pipe supports
- Mechanical ducting
- Safety relevant post-installed through fastenings in cracked and non-cracked concrete.
- Railings, balustrades
- Ventilation and airconditioning
- Cable trays

### Advantages

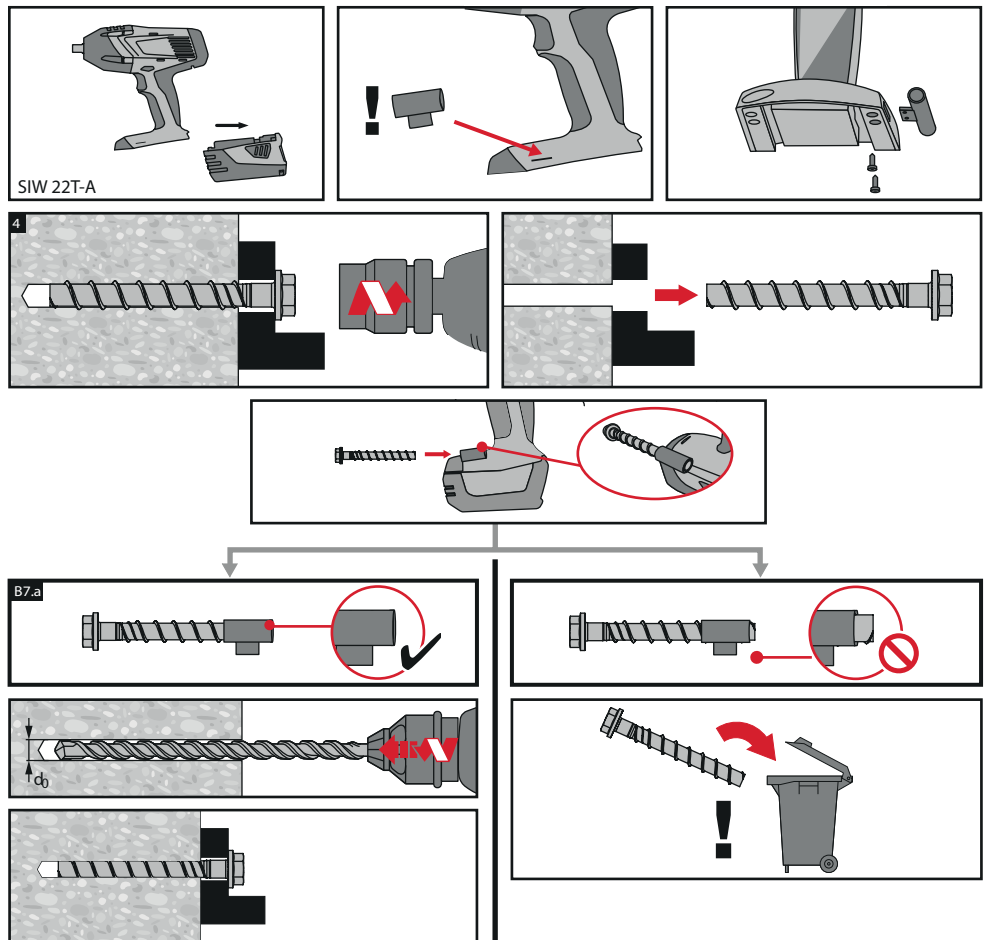
- Easy and fast installation
- Removable and re-usable
- Technical data for Concrete, masonry and fresh concrete
- Up to +10X reusability (Technical data for reusability of HUS-V 8 & 10 in fresh concrete (10/15/20 Nmm<sup>2</sup>)
- No load drop when reusing HUS-V in fresh concrete
- 2 embedment depths
- Requires small spacing and edge spacing



### Easy to know when to stop reusing the screw.

The screw must not be reused anymore when it sticks out from the tube. Therefore, the HUS-V can provide higher load classes than most metal expansion anchors in combination with smallest spacing and edge distances.

### HUS-V Reusability Concept



## Hilti PR 2-HS Rotating Laser

# BUILT TO LAST.

Featuring a shock-absorbing casing, the Hilti PR 2-HS rotating laser is built to withstand the harshest jobsite conditions. Simple function buttons make this tool incredibly user friendly, and Hilti Pulse Power technology allows for highly reliable readings, even in bright light.



### Highlights

- Tool survives drops from tripod\*
- Receiver survives drops from levelling staff\*\*
- Hilti PulsePower™ technology allows for highly reliable readings, even in bright light and to avoid detection of reflected beam
- Unique Hilti housing with newly designed shock absorbing handles
- New interior damping
- Unique Sensor Technology
- Resistant against dust and water

\* at standard working height, i.e. below eye level

\*\* from 2 m

### Applications

- Checking levels when pouring concrete
- Checking and transferring heights
- Levelling and adjusting formwork
- Setting slopes (with optional adapter)

### Advantages

- One button, one function makes the tool extremely easy to use
- Built to last - newly designed shock-absorbing handles and receiver holder as well as the rugged IP 66 protected housing provide the most reliable performance in the toughest jobsite environment
- Single manual slope mode up to 60% using the PRA 79 slope adapter



### PR 2-HS Drop Resistance Technology.

Newly designed shock-absorbing handles and a rugged IP 66 protected housing resistant to water, impact and dust mean the new generation of Hilti rotating lasers are built to withstand the harshest jobsite conditions. Our new rotating lasers survive drops from the tripod at 1.5 metres.

### Performance data

Accuracy	±0.5 mm at 10 m
Laser class	Class II (Red visible laser)
Self-leveling range	±5°
IP protection class	IP 66 (dust tight and powerful water jetting)
Dimensions (L x W x H)	200 x 200 x 230 mm
Weight with batteries	2500 g
Operating temperature range	-20 - 50 °C
Operating time	30 h Li-ion (tool) / 50 h Alkaline (receiver)
Operating range with laser receiver (dia.)	2 - 600 m
Rotation speed	300 rpm
Slope types	Single
Levelling system	Fully automatic

Hilti Core Bit UCL

# EXCEPTIONAL LIFE. OUTSTANDING PERFORMANCE.

Up to 50% more segment lifetime and drilling speed. Re-tipped bit is a new bit.



## Product Features

12mm segment high and harder matrix  
High concentration of diamonds + roof shape of segment

CD welding (Capacitor discharge technology) to attach the segment

Hilti Change Module / Re tipping service

## Benefits

Up to 50% better segment lifetime  
Up to 50% more drilling speed

35% higher break out values vs. brazing

A Hilti bit re-tipped is just like a new bit

Higher quality compared to single segments re-tipping

Longer lifetime of tube re-tipping service is very convenient (half the price of a new bit).



# At your service

Hilti (Philippines) Inc. has more than 200 professionally trained Sales Representatives and Engineers that are armed with knowledge and experience to bring customers professional innovative solutions and outstanding added value.



## **Account Managers**

Our Account Managers are available to visit customers at their place of work, help evaluate job requirements and suggest ways to increase productivity and profitability.



## **Customer Service**

Our Customer Service Representatives are ready to assist with product advice, orders and deliveries, as well as organize on-site demonstrations with Account Managers and Engineers.

**Toll Free: 1-800-10-784-7100**



## **Engineers**

Hilti field engineers work directly with design and engineering professionals to provide expert technical support and solutions to complex challenges.



## **Hilti Centers**

Conveniently located retail stores where customers can also receive professional advice on products and applications.

**Find a store at [www.hilti.com.ph](http://www.hilti.com.ph)**



## **Hilti Online.**

Offering customers the convenience and control to access information online 24/7.

**[www.hilti.com.ph](http://www.hilti.com.ph)**

**Hilti. Outperform. Outlast.**

**Toll Free: 1-800-10-784-7100**

Hilti (Philippines) Inc. | 9th Floor Robinson's Cyberscape Beta, (between) Topaz and Ruby Road, Ortigas Center, 1605 Pasig City  
T (02) 784 7100 | F (02) 784 7101 | E [customerservice.ph@hilti.com](mailto:customerservice.ph@hilti.com)

Cebu Office | 98 M. Velez St., Guadalupe, 6000 Cebu City | T (032) 255 0850 / (032) 255 6482 | F (032) 255 5813

Davao Office | 164 R. Castillo St., Agdao, 8000 Davao City | T (082) 234 5755 to 56 | F (082) 234 5754 | [www.hilti.com.ph](http://www.hilti.com.ph)