

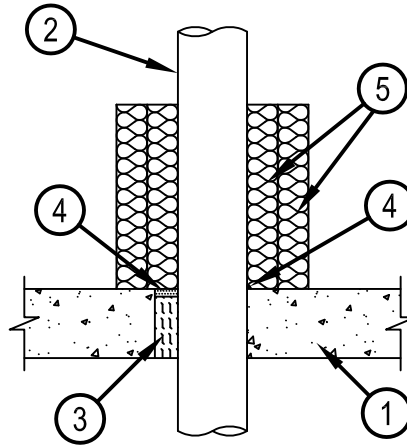


Classified by  
Underwriters Laboratories, Inc.  
to UL 1479 and CAN/ULC-S115

## System No. C-AJ-1610

CAJ 1610

ANSI/UL1479 (ASTM E814)	CAN/ULC S115
F Rating — 2Hr	F Rating — 2 Hr
T Ratings — 2 Hr	FT Ratings — 2 Hr
L Rating At Ambient — Less Than 1 CFM/sq ft	FH Rating — 2 Hr
L Rating At 400 F — Less Than 1 CFM/sq ft	FTH Ratings — 2 Hr
W Rating — Class 1 (See Item 4)	L Rating At Ambient — Less Than 1 CFM/sq ft
	L Rating At 400 F — Less Than 1 CFM/sq ft



1. Floor or Wall Assembly — Min 4-1/2 in. (114 mm) thick reinforced lightweight or normal weight (100-150 pcf or 1600-2400 kg/m<sup>3</sup>) concrete. Wall may also be constructed of any UL Classified Concrete Blocks\*. Max diam of opening is 6 in. (152 mm).  
See Concrete Blocks (CAZT) category for names of manufacturers.
2. Through Penetrant — One metallic pipe or conduit to be installed either concentrically or eccentrically within the firestop system. The annular space between the through penetrant and the periphery of opening shall be min 0 in. (point contact) to a max of 1-1/2 in. (38 mm). Through penetrant to be rigidly supported on both sides of floor or wall assembly. The following types and sizes of metallic pipe or conduit may be used:
  - A. Steel Pipe — Nom 4 in. (102 mm) diam (or smaller) Schedule 40 (or heavier) steel pipe.
  - B. Iron Pipe — Nom 4 in. (102 mm) diam (or smaller) cast or ductile iron pipe.
  - C. Steel Conduit — Nom 4 in. (102 mm) diam (or smaller) rigid steel conduit.
3. Packing Material — Min 4 in. (102 mm) thickness of min 4 pcf (64 kg/m<sup>3</sup>) mineral wool firmly packed into opening as a permanent form. Packing material to be recessed min 1/2 in. (13 mm) from top of concrete in floor or from both ends of wall to accommodate the required thickness of fill material (Item 4).
4. Fill, Void or Cavity Material\* — Sealant — Fill material applied to a min depth of 1/2 in. (13 mm) flush with top surface of floor or with both surfaces of wall.. A min 1/4 in. (6 mm) bead of fill material to be applied at area of point contact.  
HILTI CONSTRUCTION CHEMICALS, DIV OF HILTI INC — CP604 Sealant (Floors Only), CFS-S SIL GG, CFS-S SIL SL (floors only), CP606 Sealant, FS-ONE Sealant or FS-ONE MAX Intumescent Sealant. Note:W Rating applies only when CFS-S SIL GG, CFS-S SIL SL (floors only), CP604 Sealant or FS-ONE MAX Intumescent Sealant is used.
5. Batts and Blankets\* — Two layers of nom 2 in. (51 mm) thick fiberglass duct wrap, min 1 pcf (16 kg/m<sup>3</sup>), tightly wrapped around penetrant and tightly butted to the top surface of the floor or both sides of wall to extend min 12 in. (305 mm) above floor or past both sides of wall. All longitudinal seams of both layers of duct wrap are to be sealed with foil tape.  
See Batts and Blankets (BKNV) category in the Building Materials Directory for names of manufacturers. Any batts and blankets material meeting the above specifications and bearing the UL Classification Marking with a Flame Spread Index of 25 or less and a Smoke Developed Index of 50 or less may be used.

\* Indicates such products shall bear the UL or cUL Certification Mark for jurisdictions employing the UL or cUL Certification (such as Canada), respectively.



**Hilti Firestop Systems**

Reproduced by HILTI, Inc. Courtesy of  
Underwriters Laboratories, Inc.  
February 20, 2015