

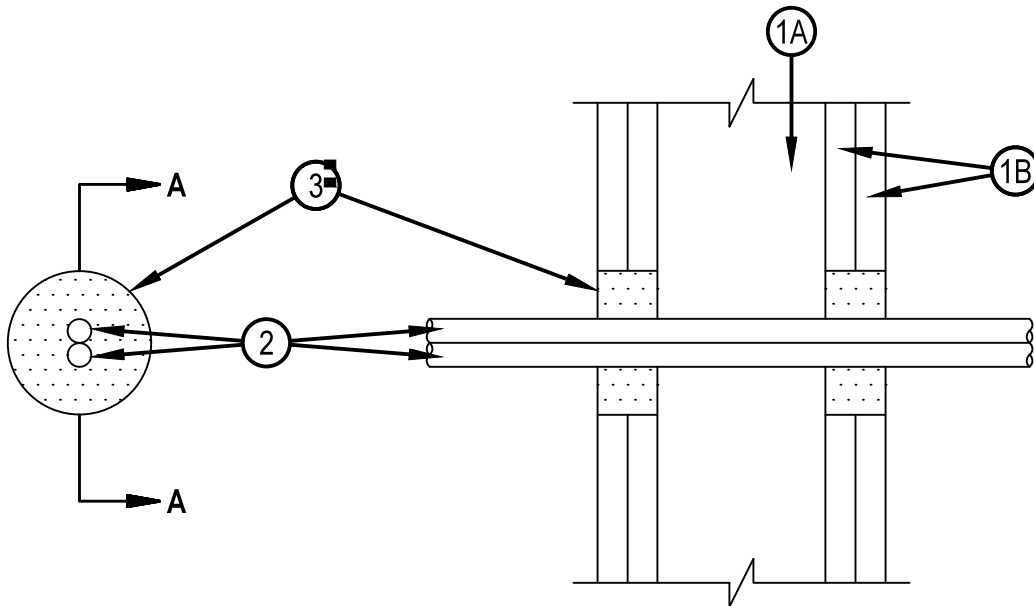


Classified by  
Underwriters Laboratories, Inc.  
to UL 1479 and CAN/ULC-S115

# System No. W-L-3071

WL 3071

ANSI/UL1479 (ASTM E814)	CAN/ULC S115
F Rating — 1 and 2 Hr (See Item 1)	F Rating — 1 and 2 Hr (See Item 1)
T Rating — 1/4 and 3/4 Hr (See Item 1)	FT Ratings — 1/4 and 3/4 Hr (See Item 1)
L Rating At Ambient - Less Than 1 CFM/sq ft	FH Rating — 1 and 2 Hr (See Item 1)
L Rating At 400 F - 4 CFM/sq ft	FTH Rating — 1/4 and 3/4 Hr (See Item 1)
	L Rating At Ambient - Less Than 1 CFM/sq ft
	L Rating At 400 F - 4 CFM/sq ft



## SECTION A-A

1. Wall Assembly — The fire-rated gypsum wallboard/stud wall assembly shall be constructed of the materials and in the manner specified in the individual U300, U400, V400 or W400 Series Wall and Partition Designs in the UL Fire Resistance Directory and shall include the following construction features.
    - A. Studs — Wall framing may consist of either wood studs or steel channel studs. Wood studs to consist of nom 2 by 4 in. (51 by 102 mm) lumber spaced 16 in. (405 mm) OC. Steel studs to be min 2-1/2 in. (64 mm) wide and spaced max 24 in. (610 mm) OC.
    - B. Gypsum Board\* — 5/8 in. (16 mm) thick, 4 ft (122 cm) wide with square or tapered edges. The gypsum wallboard type, thickness, number of layers, fastener type and sheet orientation shall be as specified in the individual Wall and Partition Design. Max diam of opening is 3 in. (76 mm). The hourly F, FH Rating of the firestop system is equal to the hourly fire rating of the wall assembly in which it is installed. The hourly T, FT, FTH Rating of the firestop system is 1/4 and 3/4 hr for 1 and 2 hr rated wall assemblies, respectively.
  2. Cables — Max two 3/C with ground No. 2/0 AWG aluminum or copper Type SER cable with polyvinyl chloride (PVC) insulation. Cable to be rigidly supported on both sides of wall assembly. The annular space between the cables and the periphery of opening shall be min 1/2 in. to max 1-1/2 in. (13 to 38 mm).
  3. Fill, Void or Cavity Material\* — Sealant — Installed to completely fill the annular space between the cables and gypsum wallboard on both sides of wall.  
HILTI CONSTRUCTION CHEMICALS, DIV OF HILTI INC — FS-One Sealant or FS-MAX Intumescent Sealant
- \* Indicates such products shall bear the UL or cUL Certification Mark for jurisdictions employing the UL or cUL Certification (such as Canada), respectively.



Reproduced by HILTI, Inc. Courtesy of  
Underwriters Laboratories, Inc.  
January 23, 2015