

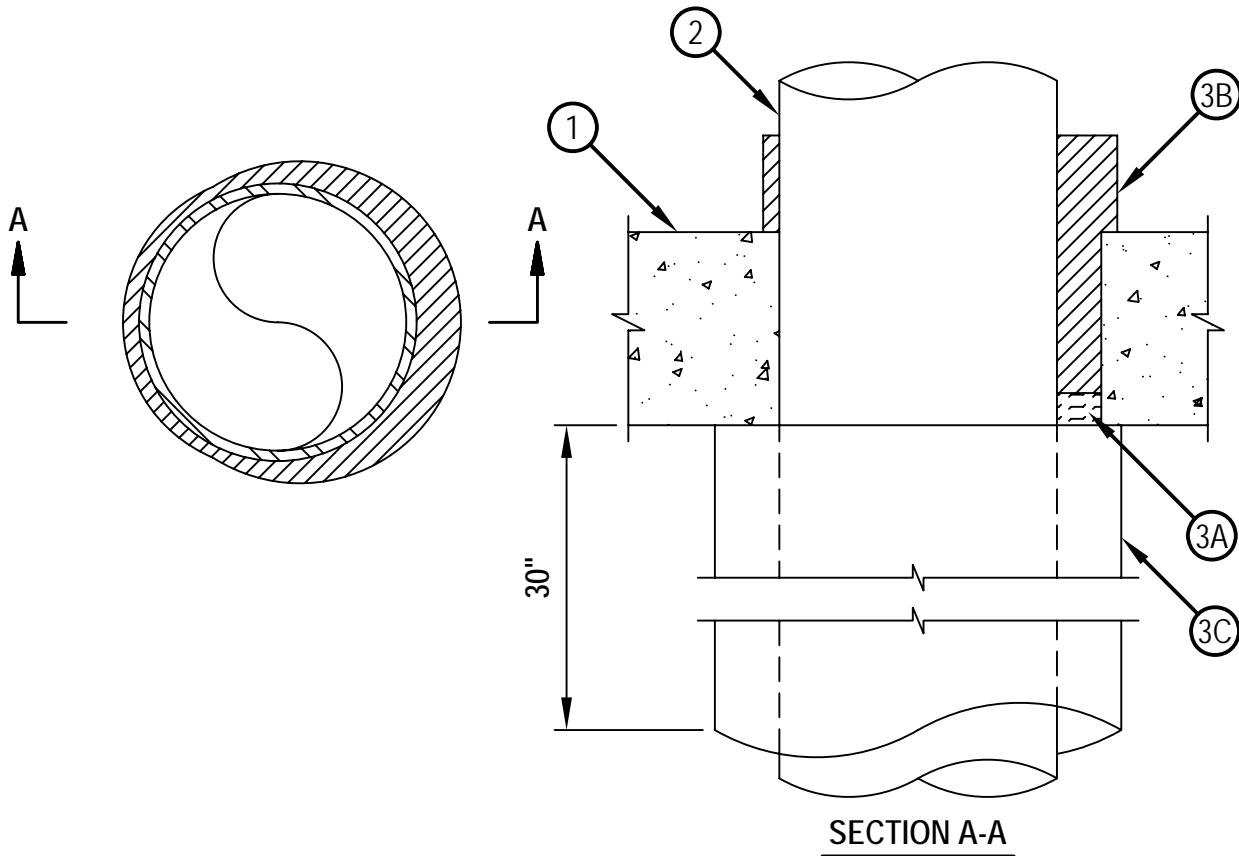


Classified by  
Underwriters Laboratories, Inc.  
to UL 1479 and CAN/ULC-S115

# System No. C-BJ-1047

F Rating - 2 Hr  
T Rating - 2 Hr

CBJ 1047



1. Floor or Wall Assembly — Min 6 in. thick reinforced lightweight or normal weight (100-150 pcf) concrete. Wall may also be constructed of any solid or filled UL Classified Concrete Blocks\*. Max diameter of opening is 10 in.  
See Concrete Blocks (CAZT) category in the Fire Resistance Directory for names of manufacturers.
2. Through Penetrant — One metallic pipe to be installed either concentrically or eccentrically within the firestop system. The annular space shall be min 0 in. (point contact) to max 1-3/8 in. Pipe to be rigidly supported on both sides of the floor or wall assembly. The following types and sizes of metallic pipes may be used:
  - A. Steel Pipe — Nom 8 in. diam (or smaller) Schedule 40 (or heavier) steel pipe.
  - B. Iron Pipe — Nom 8 in. diam (or smaller) cast or ductile iron pipe.



**Hilti Firestop Systems**

Reproduced by HILTI, Inc. Courtesy of  
Underwriters Laboratories, Inc.  
February 23, 2007



Classified by  
Underwriters Laboratories, Inc.  
to UL 1479 and CAN/ULC-S115

## System No. C-BJ-1047

F Rating - 2 Hr  
T Rating - 2 Hr

CBJ 1047

3. Firestop System — The firestop system shall consist of the following:

- A. Packing Material — Min 1 in. thickness of 4 pcf mineral wool batt insulation tightly packed into the opening as a permanent form. Packing material to be recessed from top surface of floor as required to accommodate the required thickness of fill material. Packing material not required in walls.
- B. Fill, Void or Cavity Materials\*-Foam — Min 5 in. thickness of fill material applied within the annulus, flush with top surface of floor or min 6 in thickness of fill material applied within the annulus, flush with both surfaces of wall. Additional fill material shall extend above the top surface of the floor in accordance with the following table and shall overlap the concrete ½ in. around the perimeter of the opening.  
HILTI CONSTRUCTION CHEMICALS, DIV OF HILTI INC — CP620 Fire Foam

Concrete Thickness - In.	Foam Extension Above Surface - In.
6	4
7	3
8	2
9	1
10	None

- C. Pipe Covering Materials\* — Nom 2 in. thick unfaced mineral fiber pipe insulation sized to the outside diam of pipe or tube. Pipe insulation shall extend 30 in. along length of pipe, flush with lower surfaces of floor or both surfaces of wall. Pipe insulation secured with nom 16 AWG steel wire spaced max 6 in. OC.  
IIG MINWOOL L L C — High Temperature Pipe Insulation 1200, High Temperature Pipe Insulation BWT or High Temperature Pipe Insulation Thermaloc.

\*Bearing the UL Classification Mark



**Hilti Firestop Systems**

Reproduced by HILTI, Inc. Courtesy of  
Underwriters Laboratories, Inc.  
February 23, 2007