

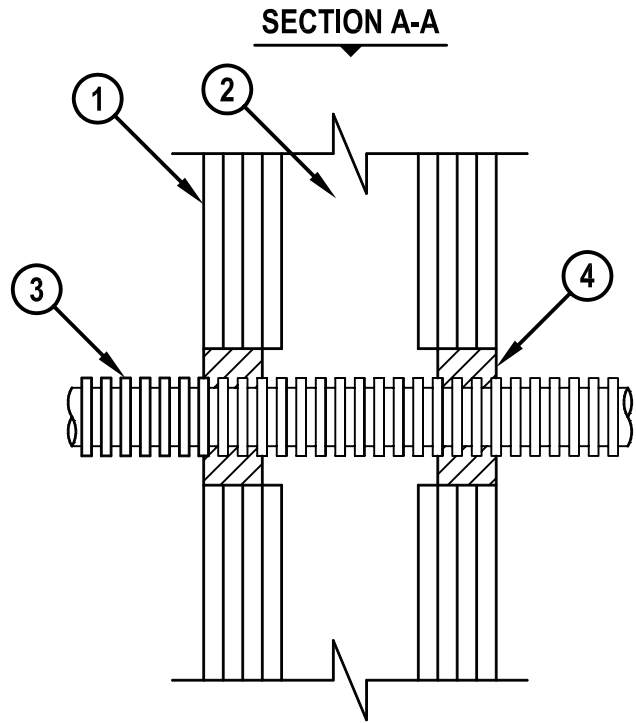
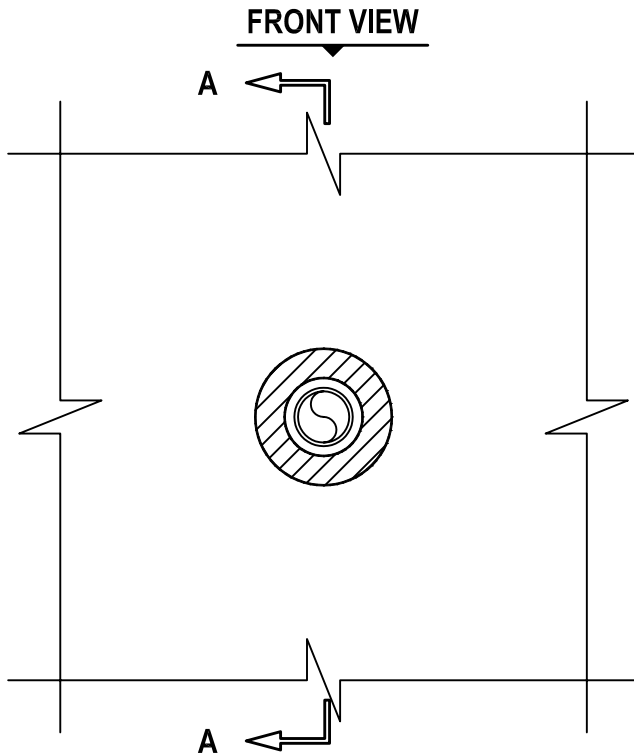
UL SYSTEM NO. W-L-2443

ENT THROUGH 3-HR. OR 4-HR. GYPSUM WALL ASSEMBLY

F-RATING = 3-HR. OR 4-HR.

T-RATING = 3-HR. OR 4-HR.

WL2443a.021705



- 1. GYPSUM WALL ASSEMBLY (UL CLASSIFIED U400 OR V400 SERIES)
(3-HR. OR 4-HR. FIRE-RATING) (4-HR. SHOWN).
- 2. [NOT SHOWN] STEEL STUDS TO BE MINIMUM 3-1/2" WIDE.
- 3. MAXIMUM 2" NOMINAL DIAMETER ENT (FORMED FROM PVC).
- 4. MINIMUM 1-1/2" DEPTH HILTI CP 618 FIRESTOP PUTTY STICK.

NOTES : 1. MAXIMUM DIAMETER OF OPENING = 3-1/2".
2. ANNULAR SPACE = MINIMUM 1/4", MAXIMUM 3/4".



HILTI, Inc.
Tulsa, Oklahoma USA (918) 252-6000

Sheet	1 of 1
Scale	13/64" = 1"
Date	FEB. 17, 2005

Drawing No.

**WL
2443a**

Saving Lives through Innovation and Education