

**INSULATED METAL PIPE THROUGH WOOD FLOOR ASSEMBLY**

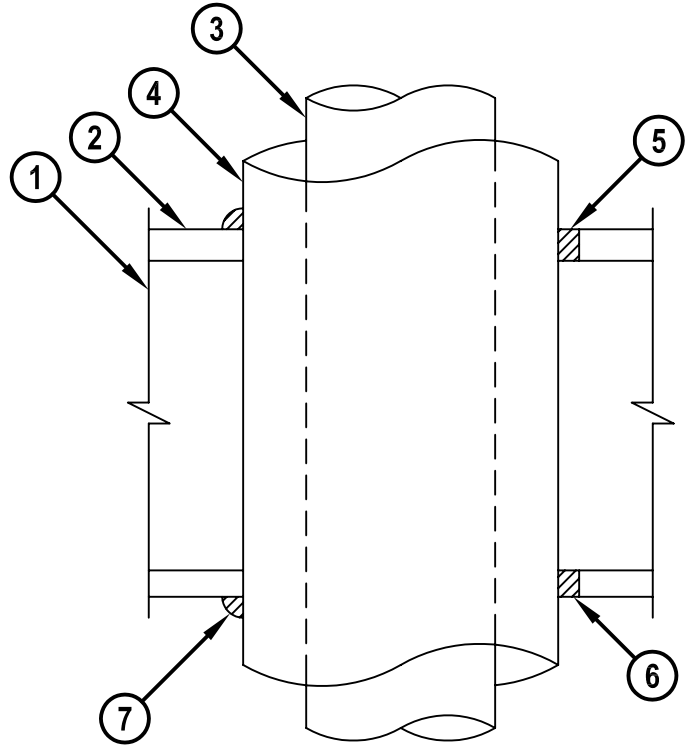
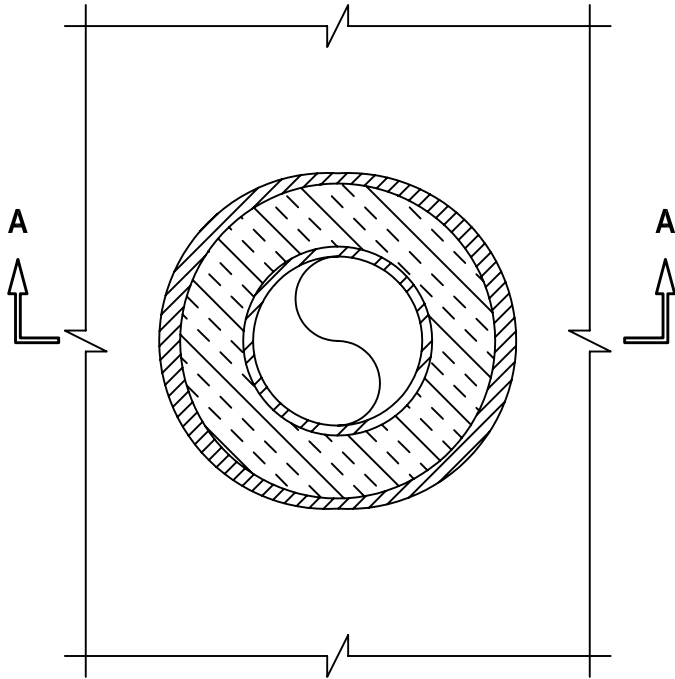
F-RATING = 1-HR.

T-RATING = 1-HR.

FC5066b.071204

**TOP VIEW**

**SECTION A-A**



1. WOOD FLOOR/CEILING ASSEMBLY (UL/cUL CLASSIFIED L500 SERIES) (1-HR. FIRE-RATING).
2. LUMBER OR PLYWOOD SUBFLOOR WITH FINISH FLOOR OF LUMBER, PLYWOOD, OR FLOOR TOPPING MIXTURE.
3. PENETRATING ITEM TO BE ONE OF THE FOLLOWING :
  - A. MAXIMUM 4" NOMINAL DIAMETER STEEL PIPE (SCHEDULE 10 OR HEAVIER).
  - C. MAXIMUM 4" NOMINAL DIAMETER CAST IRON OR DUCTILE IRON PIPE.
  - B. MAXIMUM 4" NOMINAL DIAMETER COPPER PIPE OR COPPER TUBING.
4. NOMINAL 1-1/2" THICK GLASS-FIBER PIPE INSULATION.
5. MINIMUM 3/4" DEPTH HILTI CP 606 FLEXIBLE FIRESTOP SEALANT.
6. MINIMUM 5/8" DEPTH HILTI CP 606 FLEXIBLE FIRESTOP SEALANT.
7. MINIMUM 1/2" BEAD HILTI CP 606 FLEXIBLE FIRESTOP SEALANT AT POINT OF CONTACT.

**NOTES :** 1. MAXIMUM DIAMETER OF OPENING = 8".  
 2. ANNULAR SPACE = MINIMUM 0", MAXIMUM 7/8".  
 3. CHASE WALL (NOT SHOWN, OPTIONAL) - THE THROUGH PENETRANT MAY BE ROUTED THROUGH A 1-HR. FIRE-RATED GYPSUM CHASE WALL.



HILTI, Inc.  
 Tulsa, Oklahoma USA (918) 252-6000

Sheet	1 of 1
Scale	7/32" = 1"
Date	July 12, 2004

Drawing No.  
**FC 5066b**