

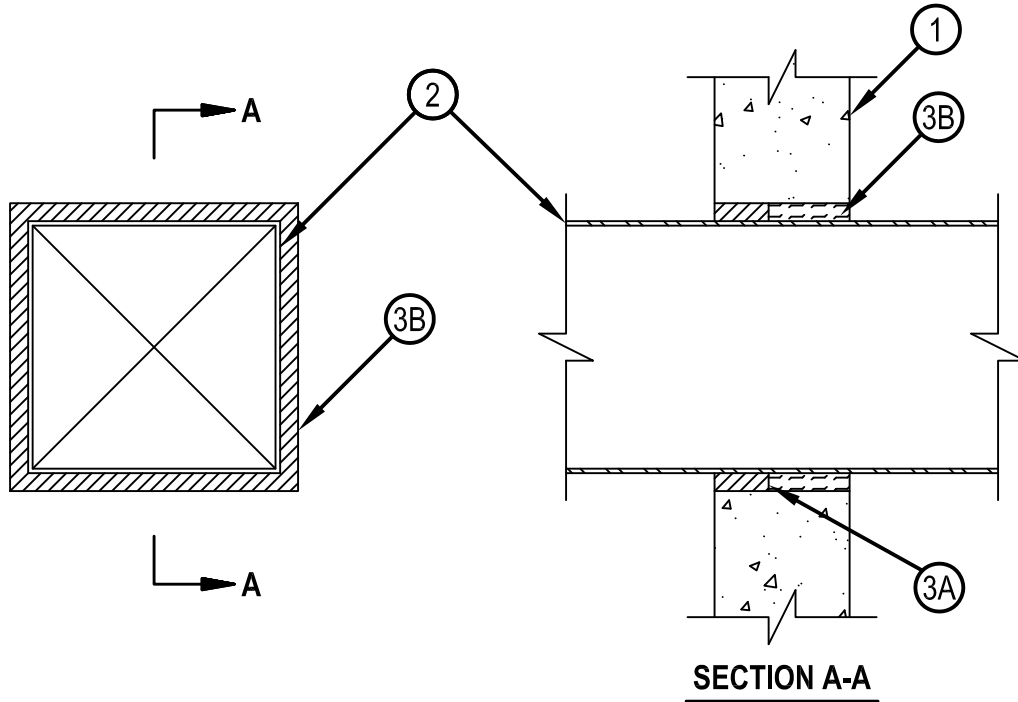


Classified by
Underwriters Laboratories, Inc.
to UL 1479 and CAN/ULC-S115

System No. W-J-7039

WJ 7039

ANSI/UL1479 (ASTM E814)	CAN/ULC S115
F Rating — 1 and 2 Hr (See Items 1 and 3)	F Rating — 1 and 2 Hr (See Items 1 and 3)
T Rating — 0 Hr	FT Rating — 0 Hr
	FH Rating — 1 and 2 Hr (See Items 1 and 3)
	FTH Rating — 0 Hr



1. Wall Assembly — Min 3-1/8 and 3-3/4 in. (79 and 95 mm) thick reinforced lightweight or normal weight (100-150 pcf or 1600-2400 kg/m³) concrete for 1 and 2 hr ratings, respectively. Wall may also be constructed of any UL Classified Concrete Blocks*. Max size of opening to be 64 sq in. (413 cm²) with max dimension of 8 in. (203 mm).

See Concrete Blocks (CAZT) category in the Fire Resistance Directory for names of manufacturers.

2. Steel Duct — Nom 7 in. by 7 in. (178 by 178 mm) (or smaller) No. 24 gauge (or heavier) galv steel duct to be installed either concentrically or eccentrically within the firestop system. The annular space shall be min 1/4 in. to max 3/4 in. (6 to 19 mm). Duct to be rigidly supported on both sides of the wall assembly.

3. Firestop System — The firestop system shall consist of the following:

A. Packing Material — Min 1-5/8 in. or 2-1/4 in. (41 or 57 mm) thickness of min 4 pcf (64 kg/m³) mineral wool batt insulation firmly packed into opening on one side of the wall as a permanent form for 1 and 2 hr walls, respectively. Packing material to be recessed from one side of wall to accommodate the required thickness of fill material.

B. Fill, Void or Cavity Materials - Sealant* — Min 1-1/2 in. (38 mm) thickness of fill material applied within opening, flush with one surface of wall.

HILTI CONSTRUCTION CHEMICALS, DIV OF HILTI INC — FS-ONE Sealant or FS-ONE MAX Intumescent Sealant

* Indicates such products shall bear the UL or cUL Certification Mark for jurisdictions employing the UL or cUL Certification (such as Canada), respectively.



Hilti Firestop Systems

Reproduced by HILTI, Inc. Courtesy of
Underwriters Laboratories, Inc.

January 23, 2015