

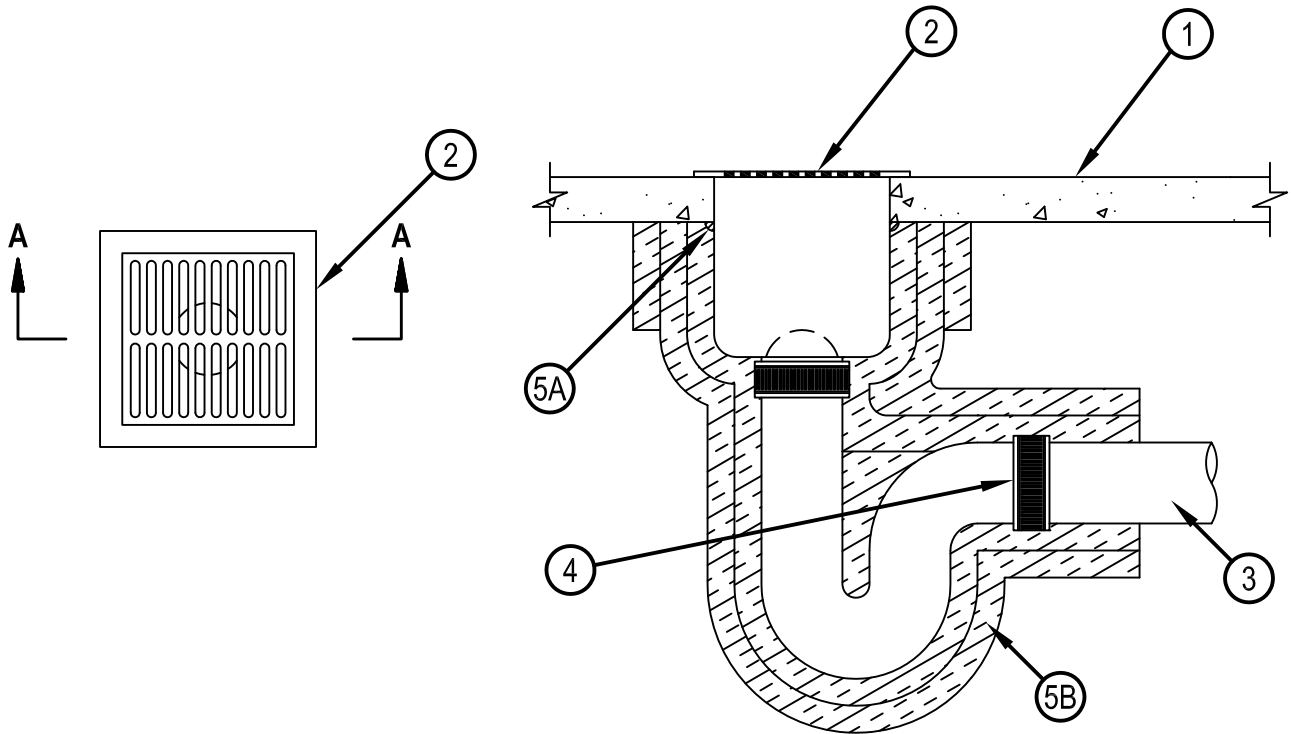


Classified by  
Underwriters Laboratories, Inc.  
to UL 1479 and CAN/ULC-S115

# System No. F-A-1135

FA 1135

ANSI/UL1479 (ASTM E814)	CAN/ULC S115
F Rating — 2 Hr	F Rating — 2 Hr
T Rating — 2 Hr	FT Rating — 2 Hr
L Rating At Ambient — Less Than 1 CFM/sq ft	FH Rating — 2 Hr
L Rating At 400 F — 4 CFM/sq ft	FTH Rating — 2 Hr
	L Rating At Ambient — Less Than 1 CFM/sq ft
	L Rating At 400 F — 4 CFM/sq ft



**SECTION A-A**

1. Floor Assembly — Min 2-1/2 in. (64 mm) thick reinforced lightweight or normal weight (100-150 pcf or 1600-2400 kg/m<sup>3</sup>) concrete.
2. Floor Sink and Grate — Max 12 in. wide by 12 in. long by 10 in. (305 by 305 by 254 mm) deep cast iron waste drain floor sink permanently embedded during concrete pour or grouted into concrete assembly. Cast iron floor grating to be installed at top of sink. Metal dome strainer may be used in sink drain. Sink flanges to bear on top plane of floor assembly.
3. Iron Pipe — Nom 4 in. (102 mm) diam (or smaller) cast or ductile iron pipe to be secured to outlet of floor sink with no-hub coupling and to be rigidly supported beneath floor away from floor sink with suitable hangers.
4. Compression Coupling — Nom 4 in. diam (or smaller) compression type high pressure pipe coupling with elastomeric plastic and a stainless steel shield. Coupling to be secured to pipe with stainless steel hose clamps at any point beyond the bottom of floor.



**Hilti Firestop Systems**

Reproduced by HILTI, Inc. Courtesy of  
Underwriters Laboratories, Inc.  
January 15, 2015



Classified by  
Underwriters Laboratories, Inc.  
to UL 1479 and CAN/ULC-S115

## System No. F-A-1135

FA 1135

5. Firestop System — The firestop system shall consist of the following:

A. Fill, Void or Cavity Materials\* Sealant — Min 1/2 in. (13 mm) bead of fill material applied around periphery of floor sink at interface with bottom surface of floor.

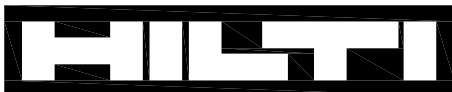
HILTI CONSTRUCTION CHEMICALS, DIV OF HILTI INC — FS-ONE Sealant or FS-ONE MAX Intumescent Sealant

B. Duct Wrap Materials\* — Two layers of nom 1-1/2 in. (38 mm) thick faced or unfaced duct wrap to be tightly wrapped around sink and drain pipe. Both layers of duct wrap shall extend a minimum of 24 in. (610 mm) beyond the bottom of floor and are held in position using wire ties.

An additional layer of nominal 1-1/2 in. (38 mm) thick duct wrap (faced or unfaced) tightly wrapped around the first two layers flush with bottom of floor and extending down min 6 in. (152 mm). Duct wrap layers are held in position using nom 16 ga steel wire ties spaced max 8 in. (203 mm) on center and max 1 in. (25 mm) from ends of layers.

THERMAL CERAMICS INC — FireMaster FastWrap XL, FireMaster FastWrap+ or Pyroscat DuctWrap XL.

\* Indicates such products shall bear the UL or cUL Certification Mark for jurisdictions employing the UL or cUL Certification (such as Canada), respectively.



**Hilti Firestop Systems**

Reproduced by HILTI, Inc. Courtesy of  
Underwriters Laboratories, Inc.  
January 15, 2015

Page: 2 of 2