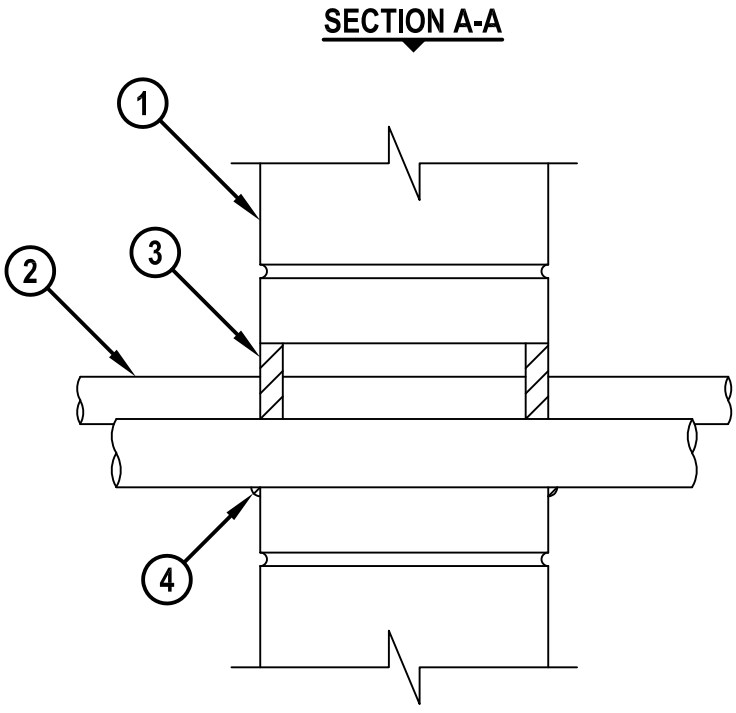
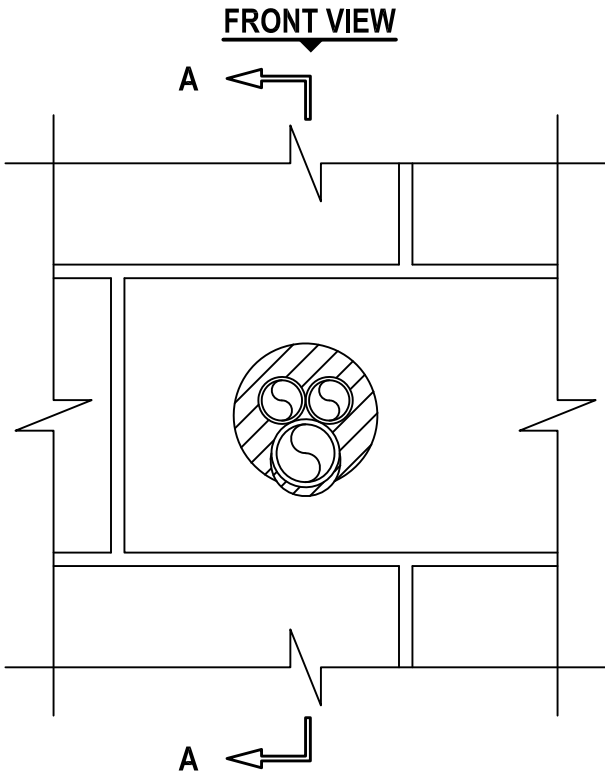


**MULTIPLE PLASTIC PIPE THROUGH CONCRETE OR BLOCK WALL ASSEMBLY**

F-RATING = 2-HR.  
T-RATING = 0-HR.

WJ2206c.041818



1. CONCRETE WALL ASSEMBLY (2-HR. FIRE-RATING) :
  - A. LIGHTWEIGHT OR NORMAL WEIGHT CONCRETE WALL (MINIMUM 6" THICK).
  - B. ANY UL CLASSIFIED CONCRETE BLOCK WALL.
2. PENETRATING ITEMS TO BE ONE OR MORE OF THE FOLLOWING :
  - A. MAXIMUM 1-1/2" NOMINAL DIAMETER PVC PLASTIC PIPE (CELLULAR OR SOLID CORE) (CLOSED PIPING SYSTEM).
  - B. MAXIMUM 1-1/2" NOMINAL DIAMETER CPVC PLASTIC PIPE (CLOSED PIPING SYSTEM).
  - C. MAXIMUM 1-1/2" NOMINAL DIAMETER RIGID NONMETALLIC CONDUIT (RNC).
  - D. MAXIMUM 1" NOMINAL DIAMETER CROSS-LINKED POLYETHYLENE (PEX) TUBING (CLOSED PIPING SYSTEM).
3. MINIMUM 5/8" DEPTH HILTI FS-ONE MAX INTUMESCENT FIRESTOP SEALANT.
4. MINIMUM 1/4" BEAD HILTI FS-ONE MAX INTUMESCENT FIRESTOP SEALANT APPLIED AT POINT OF CONTACT.

NOTES : 1. MAXIMUM DIAMETER OF OPENING = 4".  
 2. ANNULAR SPACE = MINIMUM 0", MAXIMUM 1".  
 3. CLOSED OR VENTED PIPING SYSTEM (PVC, RNC = SCHEDULE 40; CPVC = SDR 13.5; PEX = SDR 9).



HILTI, Inc.  
Plano, Texas USA (800) 879-8000

Sheet	1 of 1
Scale	3/16" = 1"
Date	Apr. 18, 2018

Drawing No.  
**WJ  
2206c**