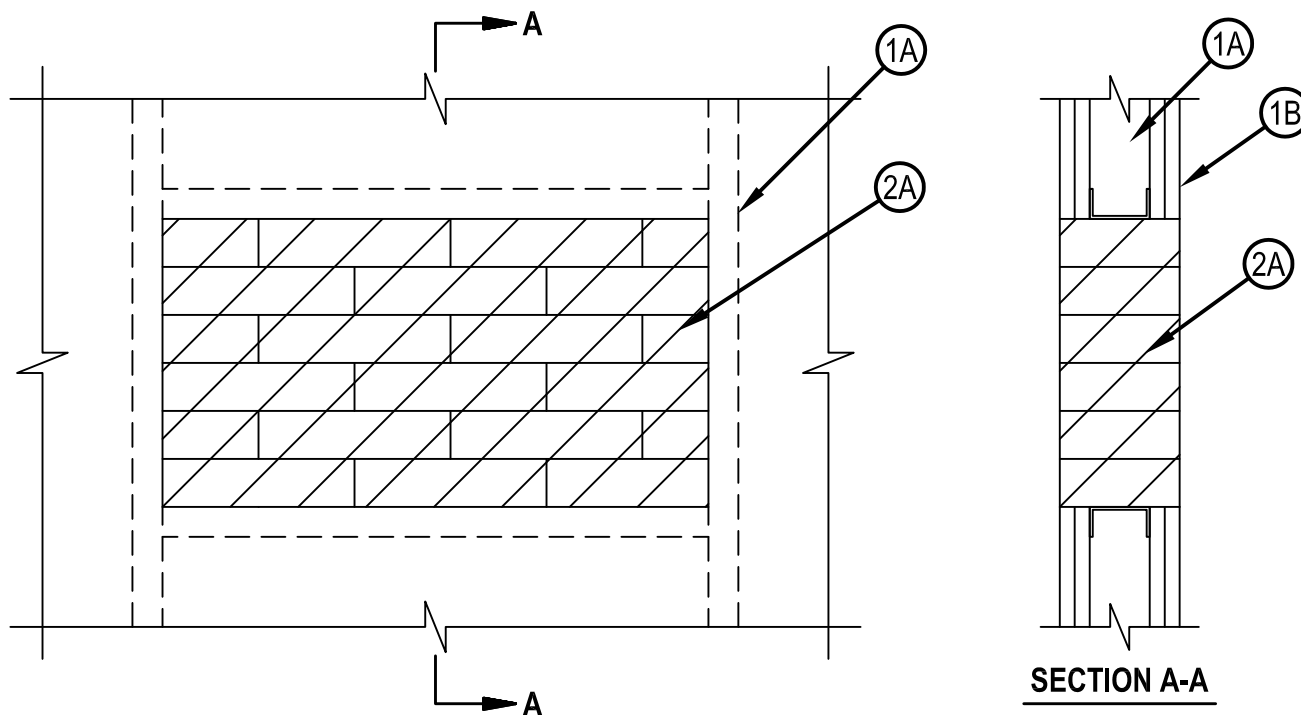


# System No. W-L-0042



Classified by Underwriters Laboratories, Inc. to UL 1479 and CAN/ULC-S115

ANSI/UL1479 (ASTM E814)	CAN/ULC S115
F Ratings — 1 and 2 Hr (See Item 1)	F Ratings — 1 and 2 Hr (See Item 1)
T Ratings — 0 and 1-1/2 Hr (See Item 1)	FT Ratings — 0 and 1-1/2 Hr (See Item 1)
	FH Ratings — 1 and 2 Hr (See Item 1)
	FTH Ratings — 0 and 1-1/2 Hr (See Item 1)



1. Wall Assembly — The 1 or 2 hr fire-rated gypsum board/stud wall assembly shall be constructed of the materials and in the manner specified if the individual U300, U400, V400 or W400 Series Wall and Partition Designs in the Fire Resistance Directory and shall include the following construction features:

- A. Studs — Wall framing shall consist of either wood studs or channel shaped steel studs. Wood studs to consist of 2 by 4 in. (51 by 102 mm) lumber spaced 16 in. (406 mm) OC. Steel studs to be min 2-1/2 in. (64 mm) wide, fabricated from min 25 MSG galvanized steel, spaced max 24 in. (610 mm) OC. Additional framing member shall be used to completely frame around opening.
- B. Gypsum Board\* — Nom 5/8 in. (16 mm) thick with square or tapered edges. The gypsum board type, number of layers and sheet orientation shall be as specified in the individual Wall and Partition Design Number. Max area of opening is 273 in<sup>2</sup> (1761 cm<sup>2</sup>) with max dimension of 22-3/4 in. (578 mm).

The hourly F and FH Ratings of the firestop system are equal to the hourly fire rating of the wall assembly in which it is installed. The hourly T, FT and FTH Ratings of the firestop system are 0 hr for 1 hr rated walls and 1-3/4 hr for 2 hr rated walls.

2. Firestop System — The firestop system shall consist of the following:

- A. Fill Void or Cavity Materials\*-Fire Blocks — Fire blocks installed with 5 in. (127 mm) dimension projecting through opening, centered within thickness of wall assembly. Blocks to be firmly packed and completely fill the entire opening. Blocks can be cut to smaller thickness where needed to assist in tight packing and filling any gaps or voids within opening.

HILTI CONSTRUCTION CHEMICALS, DIV OF HILTI INC — CFS-BL Firestop Block

- B. Fill Void or Cavity Materials\* — (Optional) Fill material applied to maximum extent possible to fill any voids that may exist within the opening.

HILTI CONSTRUCTION CHEMICALS, DIV OF HILTI INC — FS-ONE Sealant or FS-ONE MAX Intumescent Sealant, or CP618 Putty Stick

\* Indicates such products shall bear the UL or cUL Certification Mark for jurisdictions employing the UL or cUL Certification (such as Canada), respectively.



**Hilti Firestop Systems**

Reproduced by HILTI, Inc. Courtesy of Underwriters Laboratories, Inc. January 23, 2015