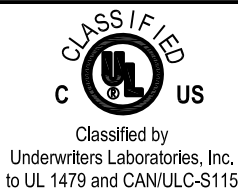
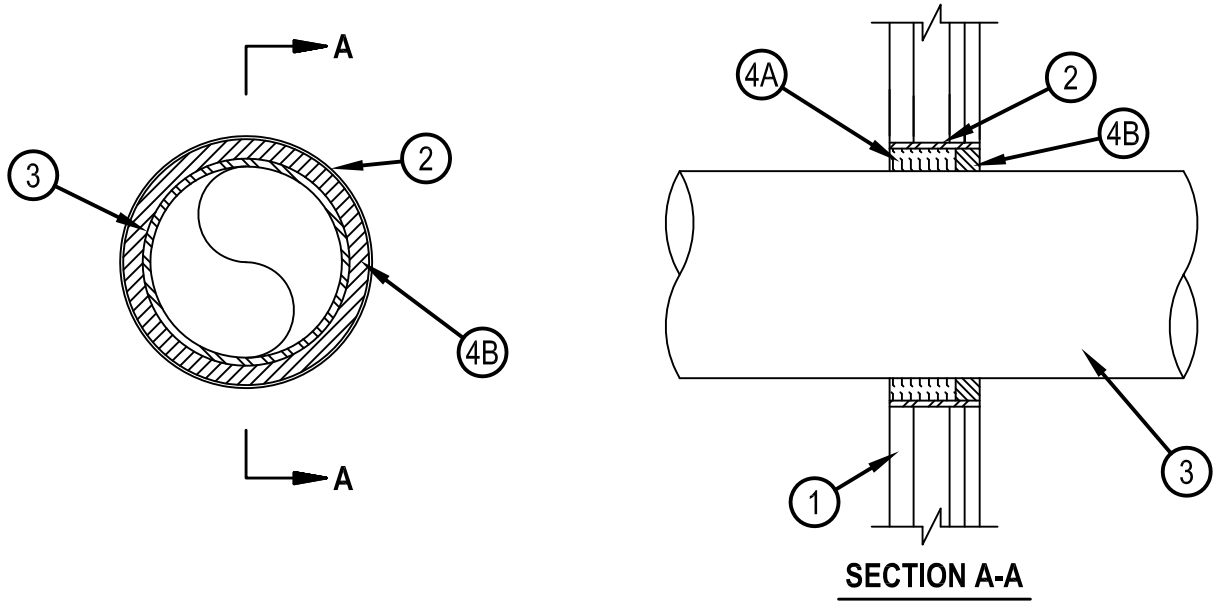


# System No. W-L-1205



ANSI/UL1479 (ASTM E814)	CAN/ULC S115
F Ratings — 1 and 2 Hr (See Items 1 and 4)	F Ratings — 1 and 2 Hr (See Items 1 and 4)
T Rating — 0 Hr	FT Rating — 0 Hr
	FH Ratings — 1 and 2 Hr (See Items 1 and 4)
	FTH Rating — 0 Hr



1. Wall Assembly — The 1 or 2 Hr fire-rated gypsum board/stud wall assembly shall be constructed of the materials and in the manner described in the individual U400, V400 or W400 Series Wall and Partition Design in the UL Fire Resistance Directory and shall include the following construction features:

- A. Studs — "C-T" shaped studs 1-5/8 in. (41 mm) wide by 2-1/2 in. (64 mm) deep, fabricated from 25 MSG galv steel, spaced max 24 in. (610 mm) OC.
- B. Gypsum Board\* — One layer of nom 1 in. (25 mm) thick, 24 in. (610 mm) wide gypsum liner and one or two layers of 5/8 in. (16 mm) thick, 4 ft (1.22 m) wide gypsum board with square or tapered edges. The gypsum board types, number of layers, fastener type and sheet orientation shall be as specified in the individual Wall and Partition Design. Max diam of opening is 10-1/2 in. (267 mm).

1A. Wall Assembly — As an alternate to the above wall assembly, the 1 or 2 Hr fire rated gypsum board/stud wall assembly shall be constructed of the materials and in the manner specified in the individual U300, U400 or V400 Series Wall and Partition Designs in the UL Fire Resistance Directory and shall include the following construction features:

- A. Studs — Wall framing may consist of either wood studs or steel channel studs. Steel studs to be min 2-1/2 in. (64 mm) wide and spaced max 24 in. (610 mm) OC. Wood studs to consist of nom 2 by 4 in. (51 by 102 mm) lumber spaced 16 in. (406 mm) OC.
- B. Gypsum Board\* — Thickness, type, number of layers and fasteners as required in the individual Wall and Partition Design. Max diam of opening is 10-1/2 in. (267 mm).

The hourly F, FH Ratings of the firestop system are equal to the hourly fire rating of the wall assembly in which it is installed.

2. Metallic Sleeve — Max 10-1/2 in. (267 mm) diam cylindrical sleeve fabricated from min 0.016 in. (0.41 mm) thick galv sheet steel and having a min 1 in. (25 mm) lap along the longitudinal seam. Length of steel sleeve to be equal to thickness of wall. Sleeve installed by coiling the sheet steel to a diam smaller than the through opening, inserting the coil through the opening and releasing the coil to let it uncoil against the circular cutouts in the gypsum board layers. Sleeve may also be formed of No. 8 steel wire mesh having a min 1 in. (25 mm) lap along the longitudinal seam.



Reproduced by HILTI, Inc. Courtesy of Underwriters Laboratories, Inc. January 22, 2015



Classified by  
Underwriters Laboratories, Inc.  
to UL 1479 and CAN/ULC-S115

## System No. W-L-1205

WL 1205

3. Through-Penetrants — One metallic pipe, conduit or tubing to be installed either concentrically or eccentrically within the firestop system. An annular space of min 1/4 in. (6 mm) to max 1-5/8 in. (41 mm) is required within firestop system. Pipe, conduit or tubing to be rigidly supported on both sides of wall assembly. The following types and sizes of metallic pipes, conduits or tubing may be used:

- A. Steel Pipe — Nom 8 in. (203 mm) diam (or smaller) Schedule 10 (or heavier) steel pipe.
- B. Iron Pipe — Nom 8 in. (203 mm) diam (or smaller) cast or ductile iron pipe.
- C. Conduit — Nom 4 in. (203 mm) diam (or smaller) steel electrical metallic tubing (EMT) or 6 in. diam steel conduit.
- D. Copper Tubing — Nom 4 in. (102 mm) diam (or smaller) Type L (or heavier) copper tubing.
- E. Copper Pipe — Nom 4 in. (102 mm) diam (or smaller) Regular (or heavier) copper pipe.
- F. Flexible Steel Conduit+ — Nom 2 in. (51 mm) diam (or smaller) flexible steel conduit.

See Flexible Metal Conduit (DXUZ) category in the Electrical Construction Equipment Directory for names of manufacturers.

4. Firestop System — The firestop system shall consist of the following:

A. Packing Material — Min 2-1/8 in. (54 mm) or 2-3/4 in. (70 mm) thickness of min 4 pcf (64 kg/m<sup>3</sup>) mineral wool batt insulation firmly packed into opening on the room side of the wall as permanent form for 1 and 2 hr fire rated walls, respectively. Packing material to be recessed from the room side of wall as required to accommodate the required thickness of fill material. In alternate wall assembly, packing material to be flush with either side of the wall and recessed from the other side of the wall to accommodate the required thickness of fill material.

B. Fill, Void or Cavity Material — Sealant\* — Min 1 in. (25 mm) thickness of fill material applied within sleeve, flush with surface of wall.

HILTI CONSTRUCTION CHEMICALS, DIV OF HILTI INC — FS-ONE Sealant or FS-ONE MAX Intumescent Sealant

\* Indicates such products shall bear the UL or cUL Certification Mark for jurisdictions employing the UL or cUL Certification (such as Canada), respectively.

+Bearing the UL Listing Mark



**Hilti Firestop Systems**

Reproduced by HILTI, Inc. Courtesy of  
Underwriters Laboratories, Inc.  
January 22, 2015