



Classified by
Underwriters Laboratories, Inc.
to UL 1479 and CAN/ULC-S115

System No. C-AJ-1372

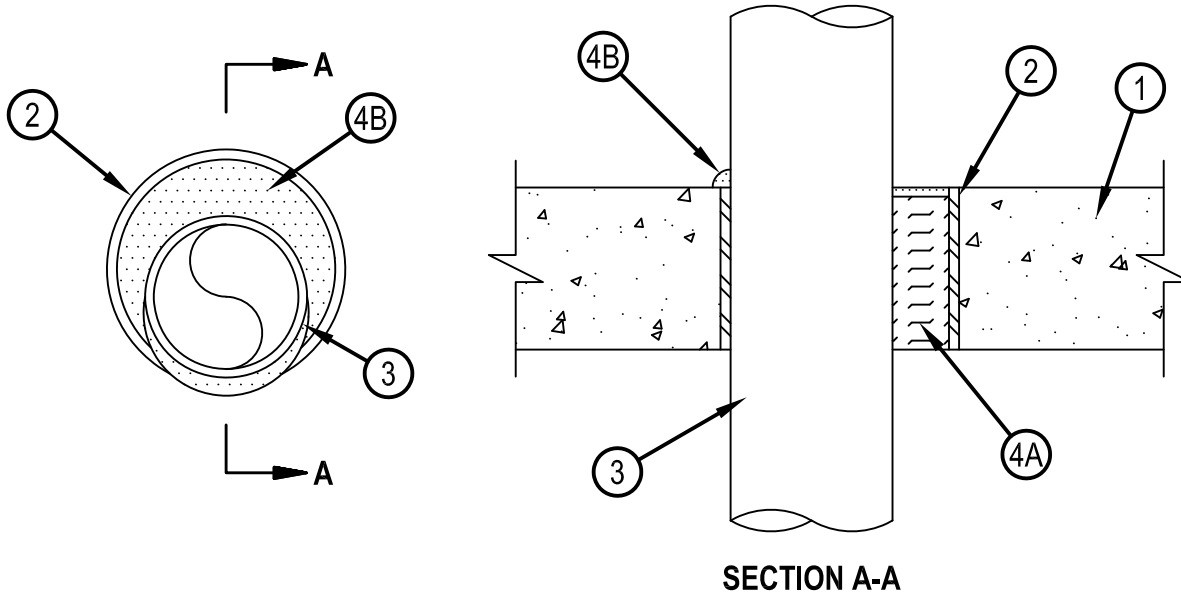
F Rating -- 3 Hr

T Rating -- 0 Hr

L Rating At Ambient -- Less Than 1 CFM/sq ft

L Rating At 400 F -- 4 CFM/sq ft

CAJ 1372



1. Floor or Wall Assembly — Min 4-1/2 in.(floors) or 4-3/4 in. thick (walls) reinforced lightweight or normal weight (100-150 pcf) concrete. Wall may also be constructed of any UL Classified Concrete Blocks*. Max diam of opening is 10-1/2 in.
See Concrete Blocks (CAZT) in the Fire Resistance Directory for names of manufacturers.
2. Metallic Sleeve — (Optional) Nom 10 in. diam (or smaller) Schedule 40 (or heavier) steel sleeve cast or grouted into floor or wall assembly, flush with both surfaces of floor or wall.
3. Through-Penetrant — One metallic pipe or conduit to be installed either concentrically or eccentrically within the firestop system. The annular space between pipe or conduit and periphery of opening shall be min 0 in. (point contact) to max 1-7/8. Pipe or conduit to be rigidly supported on both sides of floor assembly. The following types and sizes of metallic pipes or conduits may be used:
 - A. Steel Pipe — Nom 8 in. diam (or smaller) Schedule 10 (or heavier) steel pipe.
 - B. Cast Iron Pipe — Nom 8 in. diam (or smaller) cast or ductile iron pipe.
 - C. Copper Pipe — Nom 4 in. diam (or smaller) Regular (or heavier) copper pipe.
 - D. Copper Tubing — Nom 4 in. diam (or smaller) Type L (or heavier) copper tubing.
 - E. Conduit — Nom 4 in. diam (or smaller) steel conduit.
 - F. Conduit — Nom 4 in. (or smaller) steel electrical metallic tubing (EMT).
4. Firestop System — The firestop system shall consist of the following:
 - A. Packing Materials — Min 4-1/4 in. thickness of min 4 pcf mineral wool batt insulation firmly packed into opening as a permanent form. Packing material to be recessed from top surface of floor or both surfaces of wall to accommodate the required thickness of fill material.
 - B. Fill Void or Cavity Materials* - Sealant — Min 1/4 in. thickness of fill material applied within annulus, flush with top surface of floor or both surfaces of wall. At point contact location between pipe and concrete, a min 1/4 in. diam bead of fill material shall be applied at the concrete/pipe interface on the top surface of the floor or both surfaces of wall.
HILTI CONSTRUCTION CHEMICALS, DIV OF HILTI INC — CP 606 Flexible Firestop Sealant

* Indicates such products shall bear the UL or cUL Certification Mark for jurisdictions employing the UL or cUL Certification (such as Canada), respectively.



Hilti Firestop Systems

Reproduced by HILTI, Inc. Courtesy of
Underwriters Laboratories, Inc.
January 30, 2019