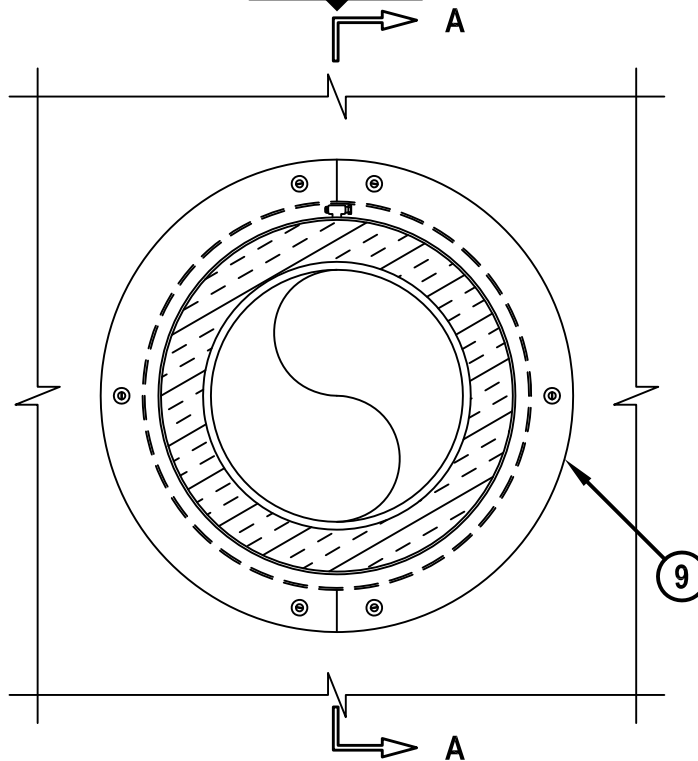


UL/cUL SYSTEM NO. W-L-5261

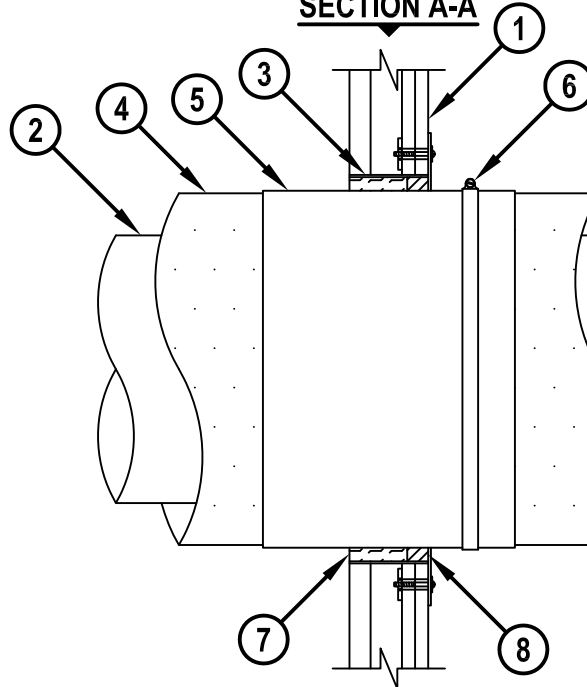
# INSULATED METAL PIPE THROUGH GYPSUM SHAFT WALL ASSEMBLY

F-RATING = 2-HR.  
T-RATING = 3/4-HR.

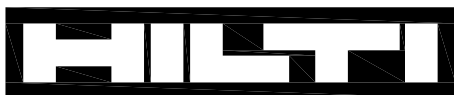
**FRONT VIEW**



**SECTION A-A**



WL5261b.011415



**Hilti Firestop Systems**

HILTI, Inc.  
Tulsa, Oklahoma USA (800) 879-8000

Sheet 1 of 2

Scale 7/64" = 1"

Date Jan. 14, 2015

Drawing No.

**WL  
5261b**

*Saving Lives through Innovation and Education*

**INSULATED METAL PIPE THROUGH GYPSUM SHAFT WALL ASSEMBLY**

F-RATING = 2-HR.  
T-RATING = 3/4-HR.

WL5261b.011415

1. GYPSUM SHAFT WALL ASSEMBLY (UL/cUL CLASSIFIED U400 OR V400 SERIES) (2-HR. FIRE-RATING) TO INCLUDE THE FOLLOWING CONSTRUCTION FEATURES :
  - A. [NOT SHOWN] "C-T" OR "C-H" SHAPED STEEL STUDS (MINIMUM 2-1/2" WIDE x 1-5/8" DEEP, MIN. 25 GA.) SPACED MAXIMUM 24" C/C.
  - B. NOMINAL 1" THICK GYPSUM LINER PANEL. TYPE, AND SHEET ORIENTATION AS SPECIFIED IN THE INDIVIDUAL UL DESIGN.
  - C. NOMINAL 1/2" OR 5/8" THICK GYPSUM WALLBOARD. TYPE, NUMBER OF LAYERS, AND SHEET ORIENTATION AS SPECIFIED IN THE INDIVIDUAL UL DESIGN.
2. PENETRATING ITEM TO BE ONE OF THE FOLLOWING :
  - A. MAXIMUM 12" NOMINAL DIAMETER STEEL PIPE (SCHEDULE 10 OR HEAVIER).
  - B. MAXIMUM 12" NOMINAL DIAMETER CAST IRON PIPE.
  - C. MAXIMUM 6" NOMINAL DIAMETER COPPER PIPE OR TUBING.
3. MAXIMUM 18-1/2" DIAMETER SHEET METAL SLEEVE (MIN. 28 GA.) HAVING A MINIMUM 2" OVERLAP ALONG LONGITUDINAL SEAM.
4. NOMINAL 2" THICK CELLULAR GLASS PIPE INSULATION (FOAMGLASS MANUFACTURED BY PITTSBURGH CORNING CORP.).
5. MINIMUM 12" LONG JACKET FORMED OF MINIMUM 0.010" THICKNESS, STEEL OR ALUMINUM SHEET. ENDS OF THE JACKET TO OVERLAP BY A MINIMUM 2" AND TO BE CENTERED WITHIN WALL ASSEMBLY.
6. SECURE JACKET IN PLACE WITH MINIMUM 1/2" WIDE STEEL HOSE CLAMP OR BAND LOCATED WITHIN 2" OF END OF JACKET ON FINISHED SIDE OF WALL ASSEMBLY.
7. MINIMUM 2-3/4" THICKNESS MINERAL WOOL (MIN. 4 PCF DENSITY) TIGHTLY PACKED AND RECESSED TO ACCOMMODATE SEALANT.
8. MINIMUM 1" DEPTH HILTI FS-ONE MAX OR FS-ONE INTUMESCENT FIRESTOP SEALANT.
9. SHEET METAL COVER PLATE (MIN. 24 GA.) OVERLAPPING ONTO WALL MINIMUM 2". SEAM OF STEEL COVER PLATE TIGHTLY BUTTED TOGETHER AND SECURED TO THE FINISHED SIDE OF WALL ASSEMBLY WITH 3/16" OR 1/4" DIAMETER TOGGLE BOLTS WITH STEEL WASHERS.

NOTES : 1. MAXIMUM DIAMETER OF OPENING = 18-1/2".  
2. ANNULAR SPACE = MINIMUM 1/4", MAXIMUM 1-1/4".



**Hilti Firestop Systems**

HILTI, Inc.  
Tulsa, Oklahoma USA (800) 879-8000

Sheet	1 of 2
Scale	7/64" = 1"
Date	Jan. 14, 2015

Drawing No.

**WL  
5261b**