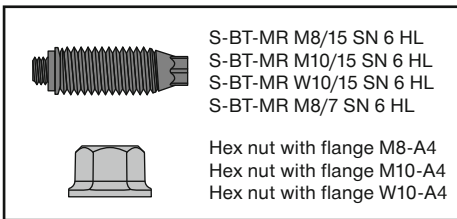
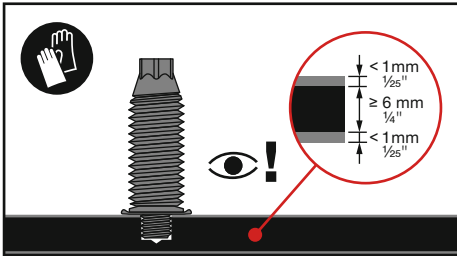
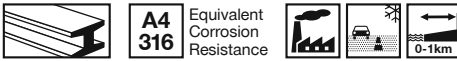
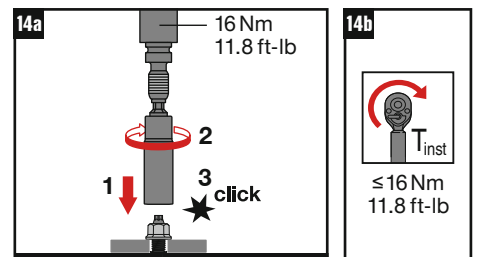
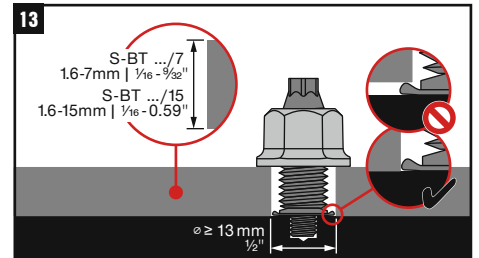
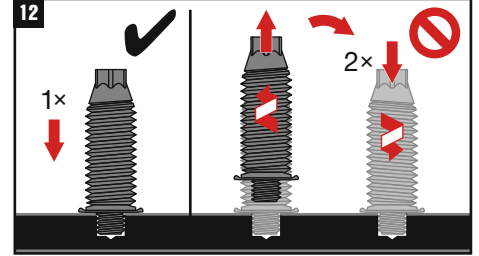
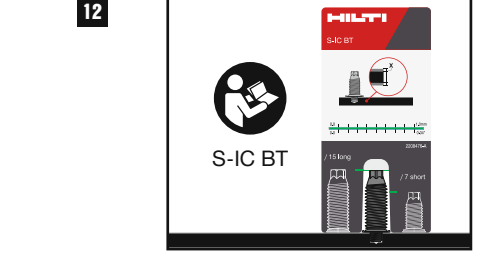
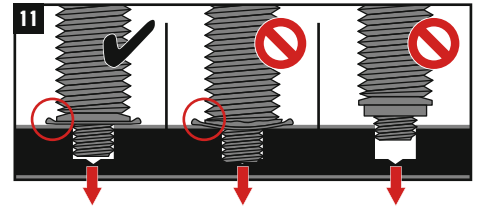
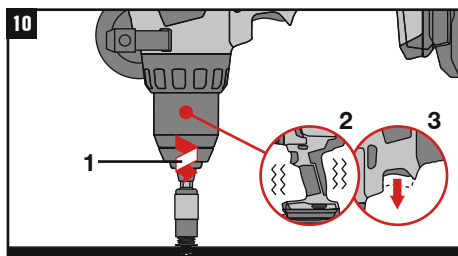
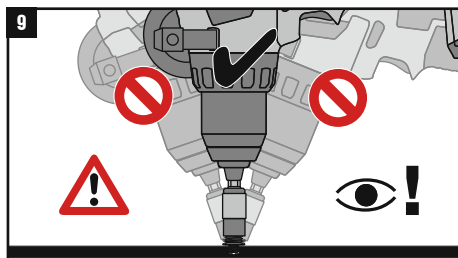
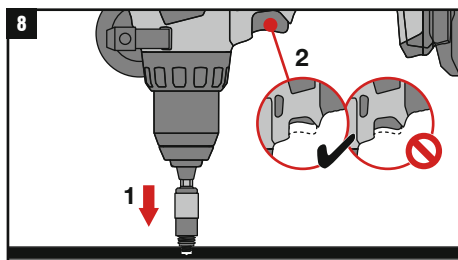
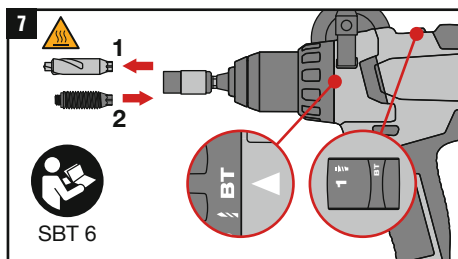
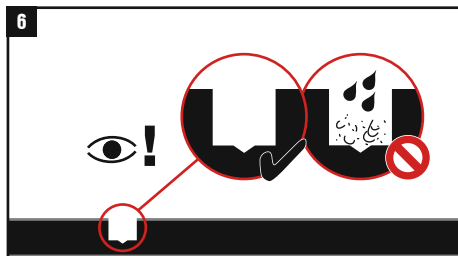
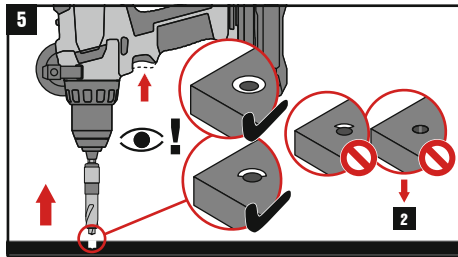
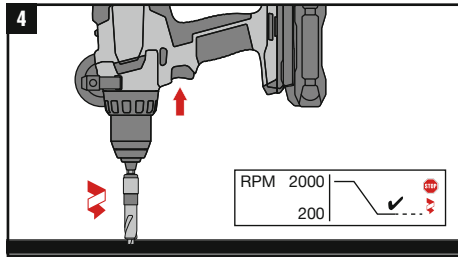
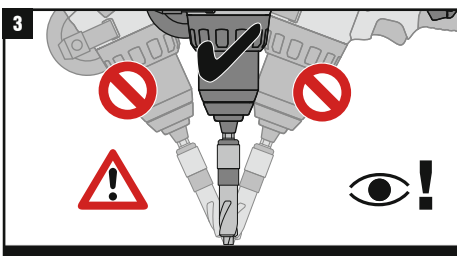
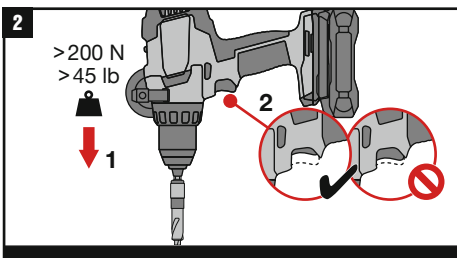
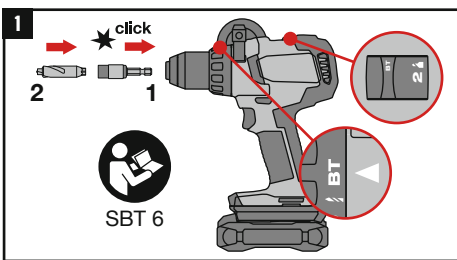




2481586-2025.10.09



	SBT 6
	TS-BT 5.3 M8 HEX TS-BT 5.3 M10/W10 HEX
	S-SH BT M8 S-SH BT M10/W10
	Torque Tool S-BT 1/4" 16 Nm / 11.8 lb-ft
	S-NS 13 C 95/3 1/4" (M8) S-NS 15 C 95/3 1/4" (M10) S-NS 9/16" C 95/3 1/4" (W10)
	S-IC BT



CE	
23	
Hilti Corporation, Feldkircher Strasse 100, LI-9494 Schaan	
Hilti-SF-DoP-044	
ETA-23/0001	
EAD 333037-00-0602	
0672-CPR	
Threaded studs for connection of materials to structural steel and aluminium members	
www.hilti.group	