

UL SYSTEM NO. W-J-2337

PLASTIC PIPE THROUGH CONCRETE WALL OR BLOCK WALL ASSEMBLY

F-RATING = 2-HR.

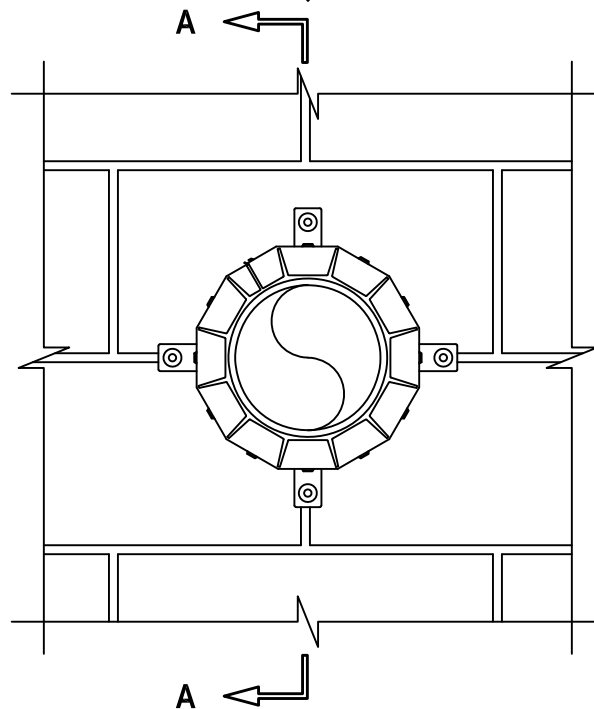
T-RATING = 0-HR., 1-HR., OR 2-HR.

L-RATING AT AMBIENT = 3 CFM / SQ FT

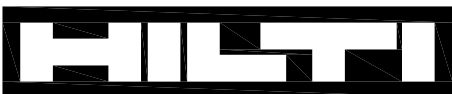
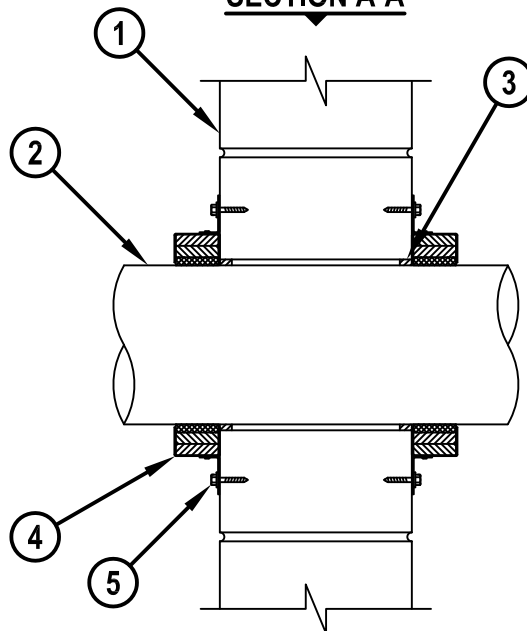
L-RATING AT 400° F = LESS THAN 1 CFM / SQ FT

WJ2337c.060718

FRONT VIEW



SECTION A-A



Hilti Firestop Systems

HILTI, Inc.
Plano, Texas USA (800) 879-8000

Sheet	1 of 2
Scale	1/8" = 1"
Date	June 07, 2018

Drawing No.

WJ
2337c

Saving Lives through Innovation and Education

PLASTIC PIPE THROUGH CONCRETE WALL OR BLOCK WALL ASSEMBLY

F-RATING = 2-HR.

T-RATING = 0-HR., 1-HR., OR 2-HR.

L-RATING AT AMBIENT = 3 CFM / SQ FT

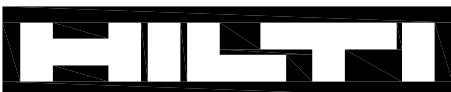
L-RATING AT 400° F = LESS THAN 1 CFM / SQ FT

WJ2337c.060718

1. CONCRETE WALL ASSEMBLY (2-HR. FIRE-RATING) :
 - A. LIGHTWEIGHT OR NORMAL WEIGHT CONCRETE WALL (MINIMUM 5" THICK).
 - B. ANY UL CLASSIFIED CONCRETE BLOCK WALL.
2. PENETRATING ITEM TO BE ONE OF THE FOLLOWING (ALSO SEE NOTE NO. 3 BELOW) :
 - A. MAXIMUM 10" NOMINAL DIAMETER PVC PLASTIC PIPE (CELLULAR OR SOLID CORE).
 - B. MAXIMUM 10" NOMINAL DIAMETER CPVC PLASTIC PIPE (CLOSED PIPING SYSTEM ONLY).
 - C. MAXIMUM 6" NOMINAL DIAMETER ABS PLASTIC PIPE (CELLULAR OR SOLID CORE).
 - D. MAXIMUM 6" NOMINAL DIAMETER FRPP PLASTIC PIPE.
 - E. MAXIMUM 4" NOMINAL DIAMETER PVDF PLASTIC PIPE.
 - F. MAXIMUM 4" NOMINAL DIAMETER CROSS-LINKED POLYETHYLENE (PEX) TUBING (SDR 9) (AQUAPEX OR WIRSBO HEPEX BY UPONOR) (CLOSED PIPING SYSTEM ONLY).
3. HILTI FS-ONE MAX INTUMESCENT FIRESTOP SEALANT :
 - A. [OPTIONAL] MINIMUM 1/4" DEPTH OF SEALANT INSTALLED ON PIPES NOMINAL 6" AND SMALLER.
EXCEPTION : WHEN ITEM 3F IS INSTALLED, SEALANT IS REQUIRED.
 - B. MINIMUM 1/2" DEPTH OF SEALANT INSTALLED ON PIPES LARGER THAN NOMINAL 6".
4. HILTI CP 643N OR CP 644 FIRESTOP COLLAR WITH FASTENING HOOKS (SEE TABLE BELOW).
5. EACH FASTENING HOOK SECURED TO BOTTOM OF FLOOR WITH 1/4" x 1-3/4" LONG STEEL EXPANSION BOLTS IN CONJUNCTION WITH 3/4" DIAMETER STEEL WASHERS (EX. HILTI KWIK-BOLT 3).

NOMINAL PIPE DIAMETER	PRODUCT DESCRIPTION	NO. OF FASTENING HOOKS	MAXIMUM HOLE SIZE
1-1/2"	CP 643 50/1.5" N	2	2-1/8"
2"	CP 643 63/2" N	2	2-5/8"
3"	CP 643 90/3" N	3	4"
4"	CP 643 110/4" N	3	5"
6"	CP 643 160/6" N	4	7"
8"	CP 644 200/8"	10	9-1/2"
10"	CP 644 250/10"	12	11-1/2"

NOTES : 1. ANNULAR SPACE = MINIMUM 0", MAXIMUM 1/2".
 2. CLOSED OR VENTED PIPING SYSTEM (PVC, ABS, FRPP = SCHEDULE 40; CPVC = SDR 13.5; PVDF = SDR 32.5).
 3. L-RATINGS ONLY APPLY ON PIPES NOMINAL 6" AND SMALLER, WHEN HILTI FS-ONE MAX INTUMESCENT FIRESTOP SEALANT IS USED.

**Hilti Firestop Systems**

HILTI, Inc.
 Plano, Texas USA (800) 879-8000

Sheet 2 of 2

Scale -

Date June 07, 2018

Drawing No.

WJ
2337c
Saving Lives through Innovation and Education