

UL/cUL SYSTEM NO. W-L-1506

METAL PIPE THROUGH GYPSUM WALL ASSEMBLY

F-RATING = 1-HR. OR 2-HR. (SEE NOTES BELOW)

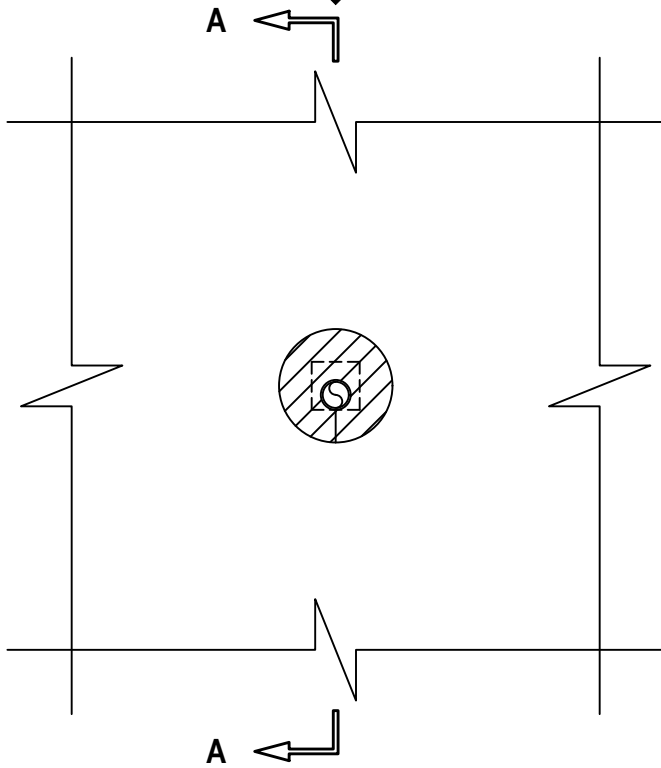
T-RATING = 0-HR., 1/2-HR., 1-HR., OR 2-HR. (SEE NOTES BELOW)

L-RATING AT AMBIENT = LESS THAN 1 CFM / OPENING

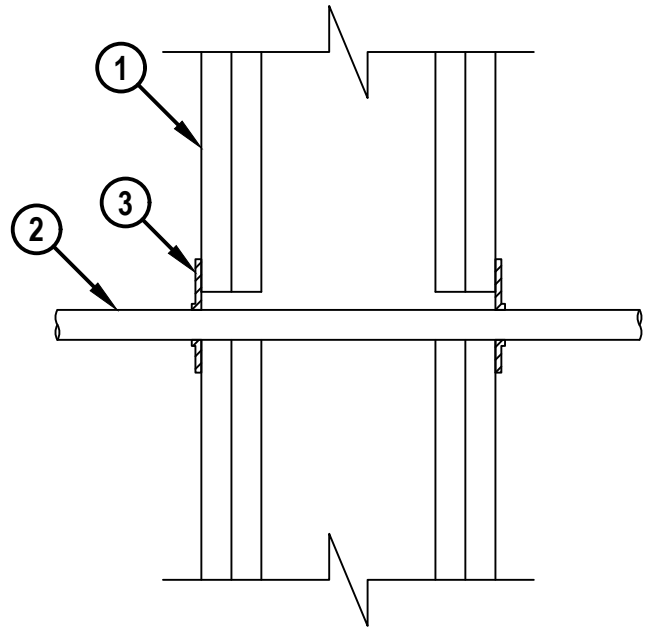
L-RATING AT 400°F = LESS THAN 1 CFM / OPENING

WL 1506e.123125

FRONT VIEW



SECTION A-A



HILTI
Hilti Firestop Systems

HILTI, Inc.
Plano, Texas USA (800) 879-8000

| | |
|-------|---------------|
| Sheet | 1 of 2 |
| Scale | 1/4" = 1" |
| Date | Dec. 31, 2025 |

Drawing No.

**WL
1506e**

Saving Lives through Innovation and Education

METAL PIPE THROUGH GYPSUM WALL ASSEMBLY

F-RATING = 1-HR. OR 2-HR. (SEE NOTES BELOW)

T-RATING = 0-HR., 1/2-HR., 1-HR., OR 2-HR. (SEE NOTES BELOW)

L-RATING AT AMBIENT = LESS THAN 1 CFM / OPENING

L-RATING AT 400°F = LESS THAN 1 CFM / OPENING

WL 1506e.123125

1. GYPSUM WALL ASSEMBLY (UL/cUL CLASSIFIED U300, U400, V400, OR W400 SERIES) (1-HR. OR 2-HR. FIRE-RATING) (2-HR. SHOWN) TO INCLUDE THE FOLLOWING CONSTRUCTION FEATURES :
 - A. [NOT SHOWN] WOOD STUDS TO CONSIST OF NOMINAL 2" x 4" LUMBER (SPACED MAXIMUM 16" OC). STEEL STUDS TO BE MINIMUM 3-5/8" WIDE (SPACED MAXIMUM 24" OC).
 - B. NOMINAL 5/8" THICK GYPSUM WALLBOARD. TYPE, NUMBER OF LAYERS, AND SHEET ORIENTATION AS SPECIFIED IN THE INDIVIDUAL UL DESIGN.
2. PENETRATING ITEM TO BE ONE OF THE FOLLOWING :
 - A. MAXIMUM 1/2" NOMINAL DIAMETER COPPER PIPE (REGULAR OR HEAVIER).
 - B. MAXIMUM 1/2" NOMINAL DIAMETER COPPER TUBING (TYPE L AND TYPE K, OR HEAVIER).
 - C. MAXIMUM 1" NOMINAL DIAMETER STEEL PIPE (SCH 40 OR HEAVIER).
 - D. MAXIMUM 1" DIAMETER STAINLESS STEEL PIPE (SCH 10 OR HEAVIER).
 - E. MAXIMUM 1" NOMINAL DIAMETER CAST OR DUCTILE IRON PIPE.
 - F. MAXIMUM 1" NOMINAL DIAMETER RIGID OR FLEXIBLE STEEL CONDUIT.
 - G. MAXIMUM 1" NOMINAL DIAMETER STEEL EMT.
 - H. MAXIMUM 1" NOMINAL DIAMETER ALUMINUM EMT.
 - I. MAXIMUM 1" NOMINAL DIAMETER ALUMINUM CONDUIT.
 - J. MAXIMUM 1" NOMINAL DIAMETER ALUMINUM PIPE (SCH 5 OR HEAVIER).
3. HILTI CFS-D 1" FIRESTOP PUTTY DISC PRESSED FIRMLY AROUND THE PIPE LAPPING NOMINAL 5mm ONTO PIPE COMPLETELY COVERING OPENING AND FIRMLY PRESSED TO LAP ONTO THE WALL. DISC SEAM TO BE FIRMLY PRESSED AND SEALED TIGHT.

- NOTES : 1. OPENING MAY BE ROUND, RECTANGULAR, OR IRREGULAR WITH A MAXIMUM DIAMETER OF DIMENSION OF 1-1/4".
2. ANNULAR SPACE (PENETRATIONS 2A THROUGH 2G) = MINIMUM 0".
 3. ANNULAR SPACE (PENETRATIONS 2H THROUGH 2J) = MINIMUM 0", MAXIMUM 1/8".
 4. WHEN PENETRATION 2A OR 2B IS INSTALLED, AND THE OPENING EXCEEDS 1", MAXIMUM ANNULAR SPACE = 3/8".
 5. WHEN PENETRATION 2A OR 2B IS INSTALLED, T-RATING IS 1-HR. FOR 1-HR. RATED WALL ASSEMBLIES, AND T-RATING IS 2-HR. FOR 2-HR. RATED WALL ASSEMBLIES RESPECTIVELY.
 6. WHEN PENETRATIONS 2C THROUGH 2G ARE INSTALLED, T-RATING IS 0-HR. FOR 1-HR. RATED WALL ASSEMBLIES AND T-RATING IS 1/2-HR. FOR 2-HR. RATED WALL ASSEMBLIES RESPECTIVELY.
 7. WHEN PENETRATIONS 2H THROUGH 2J ARE INSTALLED, THE CAN/ULC-S115 TESTING STANDARD IS NOT APPLICABLE.

**Hilti Firestop Systems**

HILTI, Inc.
Plano, Texas USA (800) 879-8000

| | |
|-------|---------------|
| Sheet | 2 of 2 |
| Scale | - |
| Date | Dec. 31, 2025 |

Drawing No.

WL
1506e

Saving Lives through Innovation and Education