

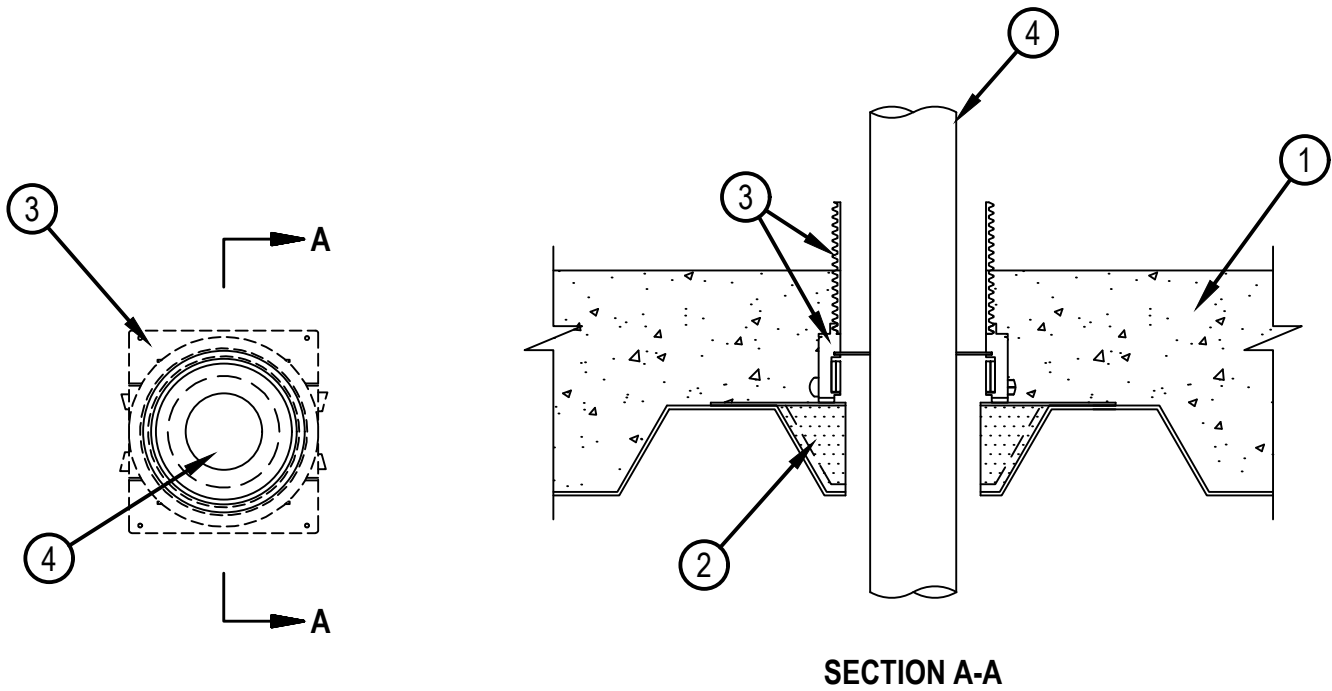


Classified by
Underwriters Laboratories, Inc.
to UL 2079

System No. F-A-3072

F Rating — 3 Hr
T Rating — 1/2 Hr

FA 3072



1. Floor Assembly — The fire rated unprotected concrete and steel floor assembly shall be constructed of the materials and in the manner specified in the individual D900 Series designs in the UL Fire Resistance Directory and as summarized below:

A. Concrete — Min 2-1/2 in. (64 mm) thick reinforced lightweight or normal weight (100-150 pcf or 1600-2400 kg/m³) concrete.

B. Steel Floor and Form Units* — Max 3 in. (76 mm) deep galv steel fluted units as specified in the individual Floor-Ceiling Design.

2. Firestop Device* — Cast in place firestop device platform installed prior to concrete placement in floor assembly. The CFS-CID MD PLT firestop device platform is screwed to the fluted deck with one fastener at each corner in accordance with manufacturer installation instructions. The firestop device platform is sized for nominal 2 and 3 in. (51 and 76 mm) deep fluted decks.

HILTI CONSTRUCTION CHEMICALS, DIV OF HILTI INC — CFS-CID MD PLT W2" and W3"

2a. As an alternative to item 2, for CFS-CID MD M and CFS-CID MD P only, HILTI Metal Deck Adapter may be installed in accordance with the manufacturer's instructions. When Metal Deck Adapter is used CFS-CID MD PLT is not to be installed.

3. Firestop Device* — Cast in place firestop device installed over firestop device platform or installed with Metal Deck Adapter (Item 2a) prior to concrete placement in floor assembly. When installed on device platform (Item 2) the CFS-CID MD Firestop Device is set onto and screwed to the device platform in accordance with manufacturer installation instructions. When installed with Metal Deck Adapter (Item 2a) install in accordance with manufacturer installation instructions. The firestop device is sized for the diameter of the through penetrant and for the height of the concrete topping over the fluted deck. The 2.5" height devices are intended for a 2.5 in. (64 mm) concrete topping. The firestop device may extend a max of 2 in. (51 mm) above the top surface of the concrete.

HILTI CONSTRUCTION CHEMICALS, DIV OF HILTI INC — CFS-CID MD M 2"/2.5", CFS-CID MD P 2"/2.5", CFS-CID MD PX 2"/2.5"

4. Cable — One nom 4/C, 500 kcmil copper conductor PVC jacketed aluminum clad or steel clad TEK cable installed concentrically within device. Cable to be rigidly supported on both sides of floor assembly.

* Indicates such products shall bear the UL or cUL Certification Mark for jurisdictions employing the UL or cUL Certification (such as Canada), respectively.



Reproduced by HILTI, Inc. Courtesy of
Underwriters Laboratories, Inc.
January 30, 2025