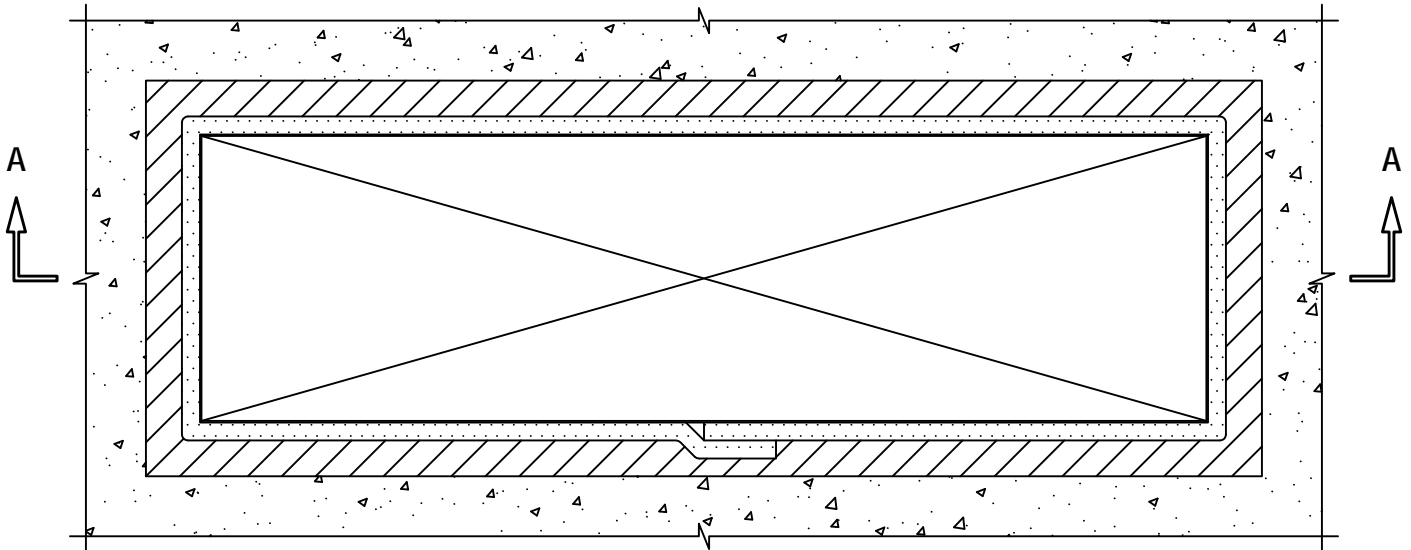


UL/cUL SYSTEM NO. C-AJ-7150

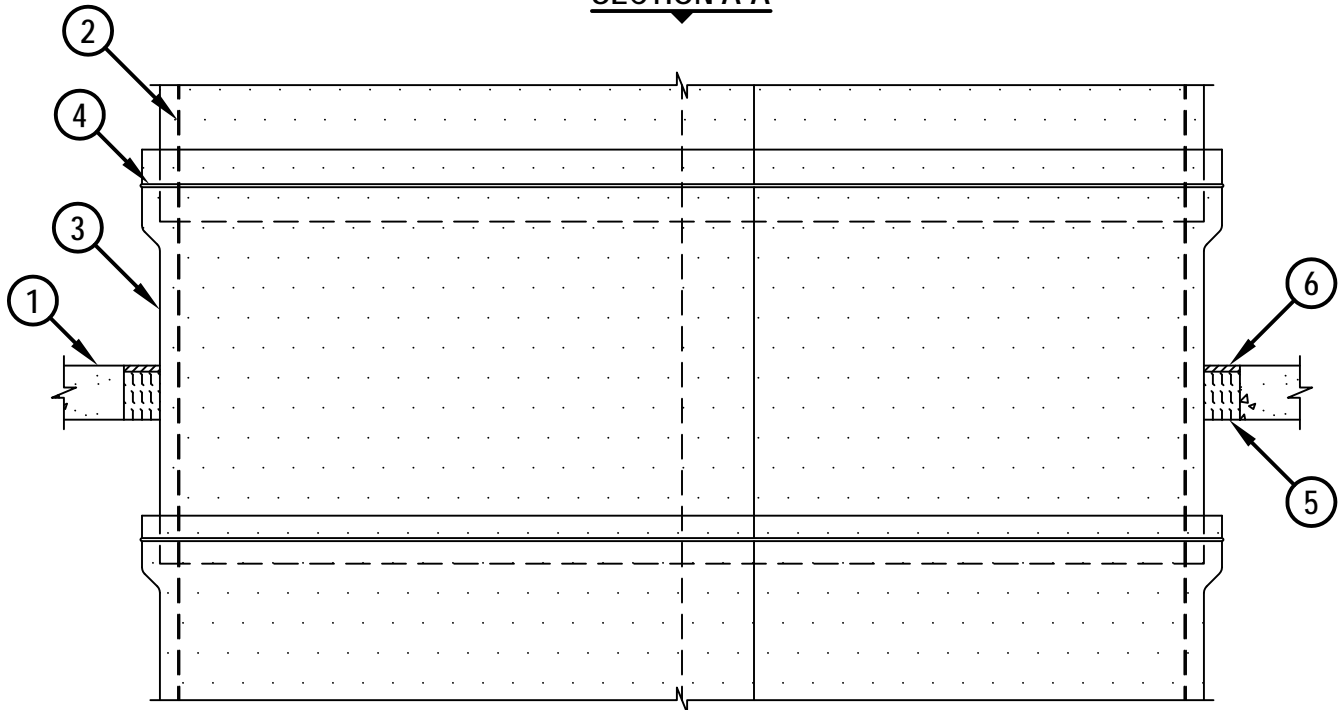
**INSULATED DUCT (THERMAL CERAMICS THROUGH CONCRETE FLOOR/WALL  
OR BLOCK WALL ASSEMBLY)**

F-RATING = 2-HR.  
T-RATING = 2-HR.

**TOP VIEW**



**SECTION A-A**



CAJ7150a.123113



HILTI, Inc.  
Tulsa, Oklahoma USA (800) 879-8000

Sheet	1 of 2
Scale	1/16" = 1"
Date	Dec. 31, 2013

Drawing No.

**CAJ  
7150a**

**Saving Lives through Innovation and Education**

UL/cUL SYSTEM NO. C-AJ-7150

**INSULATED DUCT (THERMAL CERAMICS THROUGH CONCRETE FLOOR/WALL  
OR BLOCK WALL ASSEMBLY**

F-RATING = 2-HR.  
T-RATING = 2-HR.

CAJ7150a.123113

1. CONCRETE FLOOR OR WALL ASSEMBLY (2-HR. FIRE-RATING) :
  - A. LIGHTWEIGHT OR NORMAL WEIGHT CONCRETE FLOOR (MINIMUM 4-1/2" THICK).
  - B. LIGHTWEIGHT OR NORMAL WEIGHT CONCRETE WALL (MINIMUM 4-3/4" THICK).
  - C. ANY UL/cUL CLASSIFIED CONCRETE BLOCK WALL.
2. CARBON STEEL DUCT (MIN. 26 GA.) WITH MAXIMUM PERIMETER DIMENSION OF 216" AND A MAXIMUM INDIVIDUAL DIMENSION OF 84".
3. NOMINAL 1-1/2" THICK FIREMASTER FAST WRAP XL, FIREMASTER FASTWRAP+, OR PYROSTAT DUCT WRAP XL (MANUFACTURED BY THERMAL CERAMICS) INSTALLED PER MANUFACTURER'S INSTRUCTIONS.
4. MINIMUM 1/2" WIDE x 0.015" THICK CARBON STEEL BANDING STRAPS SPACED 12" OC AND 1-1/2" FROM TRANSVERSE JOINTS OF DUCT WRAP.
5. MINIMUM 4" THICKNESS MINERAL WOOL SAFING (MIN. 3 PCF DENSITY) OR UNFACED DUCT WRAP MATERIAL TIGHTLY PACKED.
6. MINIMUM 1/2" DEPTH HILTI CFS-S SIL GG FIRESTOP SILICONE SEALANT OR HILTI CFS-S SIL SL FIRESTOP SILICONE SEALANT (FLOORS ONLY).

NOTES : 1. MAXIMUM AREA OF OPENING = 21.3 SQ. FT., WITH A MAXIMUM DIMENSION OF 93".  
2. MINIMUM 1/2" DEPTH HILTI CFS-S SIL GG FIRESTOP SILICONE SEALANT IS REQUIRED ON BOTH SIDES OF A WALL ASSEMBLY.



HILTI, Inc.  
Tulsa, Oklahoma USA (800) 879-8000

Sheet	2 of 2
Scale	-
Date	Dec. 31, 2013

Drawing No.  
**CAJ  
7150a**

***Saving Lives through Innovation and Education***