

UL/cUL SYSTEM NO. HW-D-0980

TOP OF WALL JOINT : GYPSUM SHAFT WALL ASSEMBLY

ASSEMBLY RATING = 1-HR. OR 2-HR.

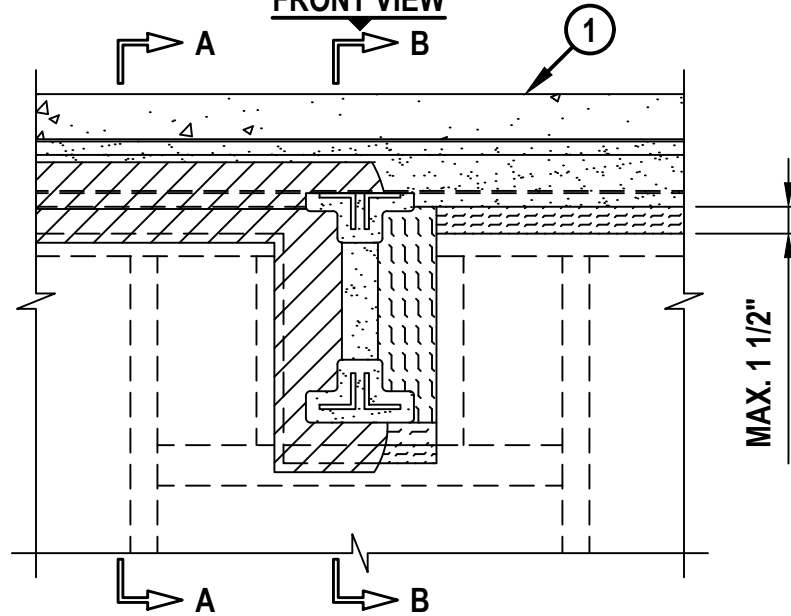
CLASS II MOVEMENT CAPABILITIES - 25% COMPRESSION OR EXTENSION

L-RATING AT AMBIENT = LESS THAN 1 CFM / LIN FT

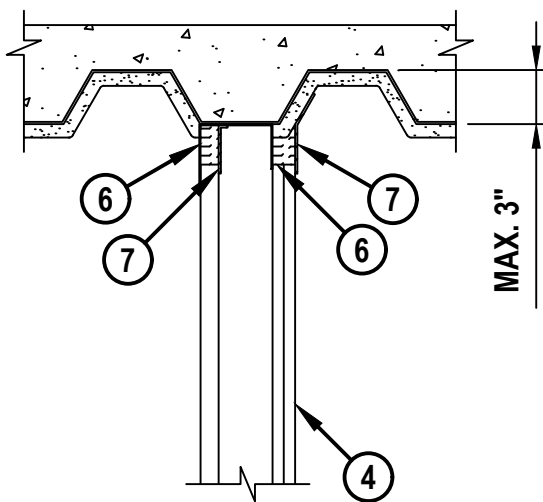
L-RATING AT 400°F = LESS THAN 1 CFM / LIN FT

HW-D-0980b.011626

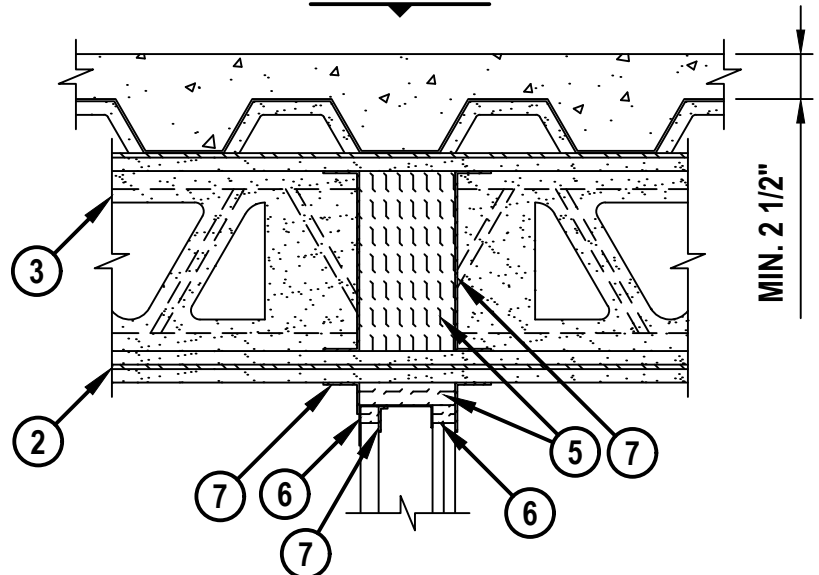
FRONT VIEW



SECTION A-A



SECTION B-B



Hilti Firestop Systems

HILTI, Inc.
Plano, Texas USA (800) 879-8000

Sheet	1 of 3
Scale	3/32" = 1"
Date	Jan. 16, 2026

Drawing No.

**HWD
0980b**

Saving Lives through Innovation and Education

TOP OF WALL JOINT : GYPSUM SHAFT WALL ASSEMBLY

ASSEMBLY RATING = 1-HR. OR 2-HR.

CLASS II MOVEMENT CAPABILITIES - 25% COMPRESSION OR EXTENSION

L-RATING AT AMBIENT = LESS THAN 1 CFM / LIN FT

L-RATING AT 400°F = LESS THAN 1 CFM / LIN FT

HWD0980b.011626

1. FLOOR OR ROOF ASSEMBLY (1-HR. OR 2-HR. FIRE-RATING) :
 - A. LIGHTWEIGHT OR NORMAL WEIGHT CONCRETE FLOOR (MIN. 2-1/2" THICK) OVER METAL DECKING (UL/cUL CLASSIFIED D700 OR D900 SERIES).
 - B. INSULATING CONCRETE (MIN. 2-1/4" THICK) OVER METAL DECKING (UL/cUL CLASSIFIED P900 SERIES).
 - C. [NOT SHOWN] FLUTED STEEL ROOF DECK WITH SPRAY-APPLIED FIREPROOFING (UL/cUL CLASSIFIED P700 SERIES).
2. [OPTIONAL] STEEL BEAM OR OPEN WEB STEEL JOIST, ORIENTED PERPENDICULAR TO WALL ASSEMBLY (SEE NOTE NO. 2 BELOW).
3. UL CLASSIFIED MONOKOTE TYPE MK-6/HY OR MK-10HB (MANUFACTURED BY GCP APPLIED TECHNOLOGIES) OR TYPE 300 OR TYPE 400 (MANUFACTURED BY ISOLATEK, INT.) FIREPROOFING SPRAYED TO THE THICKNESS SPECIFIED IN THE INDIVIDUAL D700 SERIES DESIGN (SEE NOTE NO. 3 BELOW).
4. GYPSUM SHAFT WALL ASSEMBLY (UL/cUL CLASSIFIED U400, V400, OR W400 SERIES) (1-HR. OR 2-HR. FIRE-RATING) (2-HR. SHOWN) TO INCLUDE THE FOLLOWING CONSTRUCTION FEATURES :
 - A. "J" SHAPED CEILING RUNNER, MINIMUM 4" WIDE WITH LEGS OF MINIMUM 2-1/2" (MINIMUM 25 GA.) FASTENED TO UNDERSIDE OF DECK OR FLOOR WITH STEEL FASTENERS (OR WELDS) SPACED MAXIMUM 24" OC. CEILING RUNNER MAY BE INSTALLED PARALLEL TO DECK FLUTES.
 - B. "C-H" OR "C-T" SHAPED STUDS (MINIMUM 4" WIDE, MINIMUM 25 GA.) CUT 1" TO 1-1/4" LESS IN LENGTH THAN ASSEMBLY HEIGHT, NESTING IN CEILING RUNNER.
 - C. NOMINAL 1" THICK GYPSUM LINER PANEL CUT 1" TO 1-1/2" LESS IN LENGTH THAN FLOOR TO CEILING HEIGHT. TYPE AND SHEET ORIENTATION AS SPECIFIED IN THE INDIVIDUAL UL DESIGN.
 - D. NOMINAL 5/8" THICK GYPSUM WALLBOARD "TYPE C" GYPSUM WALLBOARD APPLIED VERTICALLY OR HORIZONTALLY IN ONE OR TWO LAYERS FOR 1-HR. OR 2-HR. RATED WALLS RESPECTIVELY. CUT WALLBOARD MAXIMUM 1-1/2" LESS IN LENGTH THAN ASSEMBLY HEIGHT WITH SCREW ATTACHMENT 1" BELOW THE BOTTOM OF THE CEILING RUNNER.
5. MINERAL WOOL SAFING (MIN. 4 PCF DENSITY) COMPRESSED AND INSERTED INTO JOINT AND AROUND BEAM, FLUSH WITH WALL SURFACES. MINERAL WOOL INSTALLED WITH FIBERS VERTICAL (MIN. 25% COMPRESSION) ALONG THE SIDES OF THE BEAM AND HORIZONTAL (MIN. 50% COMPRESSION) AT THE BOTTOM OF THE BEAM.
6. HILTI CP 767 SPEED STRIPS OR MINERAL WOOL SAFING (MIN. 4 PCF DENSITY) COMPRESSED 50% AND INSERTED INTO JOINT, FLUSH WITH FINISHED SIDE OF THE WALL AND COMPLETELY FILLING AREA ABOVE THE SHAFT LINER.
7. MINIMUM 1/8" (WET) THICKNESS HILTI CFS-SP WB FIRESTOP JOINT SPRAY TO COMPLETELY COVER MINERAL WOOL AND TO OVERLAP MINIMUM 1/2" ONTO GYPSUM WALL AND CEILING RUNNER, AND MINIMUM 2" ONTO FIREPROOFING.

**Hilti Firestop Systems**

HILTI, Inc.
Plano, Texas USA (800) 879-8000

Sheet	2 of 3
Scale	-
Date	Jan. 16, 2026

Drawing No.

HWD
0980b

Saving Lives through Innovation and Education

UL/cUL SYSTEM NO. HW-D-0980

TOP OF WALL JOINT : GYPSUM SHAFT WALL ASSEMBLY

ASSEMBLY RATING = 1-HR. OR 2-HR.

CLASS II MOVEMENT CAPABILITIES - 25% COMPRESSION OR EXTENSION

L-RATING AT AMBIENT = LESS THAN 1 CFM / LIN FT

L-RATING AT 400°F = LESS THAN 1 CFM / LIN FT

HW-D-0980b.011626

NOTES : 1. MAXIMUM WIDTH OF JOINT = 1-1/2".

2. WHERE OPEN-WEB STEEL JOISTS PASS THROUGH THE WALL, 3/8" DIAMOND MESH EXPANDED STEEL LATH (NOMINAL WEIGHT = 1.7 TO 3.4 LB. PER YARD) SHALL BE SECURED TO ONE SIDE OF EACH JOIST WITH STEEL TIE WIRE.

3. FIREPROOFING MATERIAL TO BE EXCLUDED FROM METAL DECK DIRECTLY ABOVE THE GYPSUM BOARD AND FROM THE FLANGES OF THE CEILING RUNNER.

4. FRAMED OPENING SHALL BE CONSTRUCTED AROUND EACH STRUCTURAL STEEL MEMBER. MINIMUM CLEARANCE OF 1" TO MAXIMUM OF 4" SHALL BE MAINTAINED BETWEEN FRAMING AND FIREPROOFING ON THE TWO SIDES OF MEMBER. MAXIMUM CLEARANCE OF 3" SHALL BE MAINTAINED ON THE BOTTOM OF THE STEEL SUPPORT MEMBER.

5. AS AN ALTERNATE TO CEILING RUNNER IN ITEM 4A, SLOTTED CEILING RUNNERS MAY BE USED. CONSULT THE UL FIRE RESISTANCE DIRECTORY FOR APPROVED MANUFACTURERS.



Hilti Firestop Systems

HILTI, Inc.
Plano, Texas USA (800) 879-8000

Sheet 3 of 3

Scale -

Date Jan. 16, 2026

Drawing No.

HW-D-0980b

Saving Lives through Innovation and Education