

CABLE BUNDLE THROUGH GYPSUM WALL ASSEMBLY

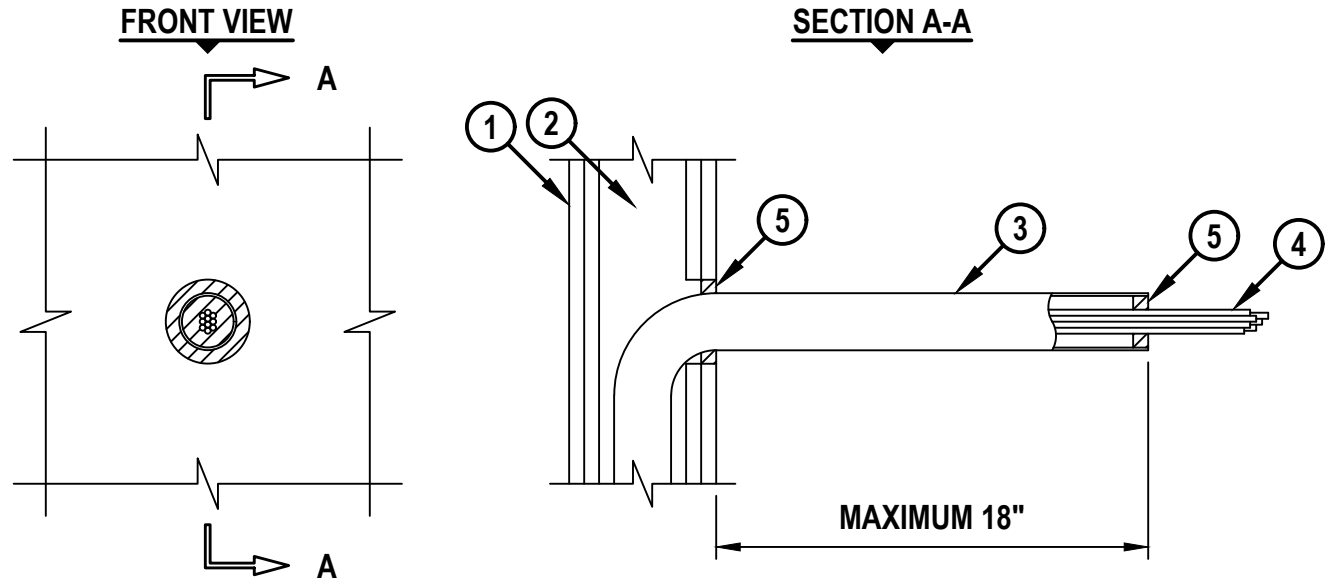
F-RATING = 1-HR. OR 2-HR.

T-RATING = 0-HR.

L-RATING AT AMBIENT = LESS THAN 1 CFM / SQ FT

L-RATING AT 400°F = LESS THAN 1 CFM / SQ FT

WL 3506a.020405



1. GYPSUM WALL ASSEMBLY (UL/cUL CLASSIFIED U300, U400, V400, OR W400 SERIES) (1-HR. OR 2-HR. FIRE-RATING) (2-HR. SHOWN).
2. [NOT SHOWN] WOOD STUDS TO CONSIST OF NOMINAL 2" x 4" LUMBER. STEEL STUDS TO BE MINIMUM 3-5/8" WIDE.
3. MAXIMUM 2" NOMINAL DIAMETER ALUMINUM EMT, ALUMINUM CONDUIT, OR ALUMINUM PIPE SLEEVE (SCHEDULE 5 OR HEAVIER). SLEEVE TO BE RIGIDLY SUPPORTED ON PENETRATED SIDE OF WALL.

**Hilti Firestop Systems**

HILTI, Inc.
Plano, Texas USA (800) 879-8000

Sheet	1 of 2
Scale	1/8" = 1"
Date	Feb. 04, 2025

Drawing No.

WL
3506a

Saving Lives through Innovation and Education

CABLE BUNDLE THROUGH GYPSUM WALL ASSEMBLY

F-RATING = 1-HR. OR 2-HR.

T-RATING = 0-HR.

L-RATING AT AMBIENT = LESS THAN 1 CFM / SQ FT

L-RATING AT 400°F = LESS THAN 1 CFM / SQ FT

WL 3506a.020405

4. CABLE BUNDLE TO CONSIST OF ANY COMBINATION OF THE FOLLOWING :

- A. MAXIMUM 7/C NO. 12 AWG POWER CABLE WITH PVC JACKET.
- B. MAXIMUM 25 PAIR NO. 24 AWG TELEPHONE CABLE WITH PVC JACKET.
- C. MAXIMUM 1/2" DIAMETER RG/U COAXIAL CABLE WITH PVC JACKET.
- D. MAXIMUM 3/C NO. 8 AWG METAL-CLAD CABLE (AFC CABLE SYSTEMS INC.).
- E. MAXIMUM 3/C (+GROUND) NO. 8 AWG COPPER CONDUCTOR CABLE (ROMEX) WITH PVC INSULATION AND JACKETING.
- F. MAXIMUM 5/8 DIAMETER FIBER-OPTIC CABLE WITH PVC JACKET.
- G. MAXIMUM 3/4" DIAMETER COPPER GROUND CABLE WITH OR WITHOUT PVC JACKET.
- H. MAXIMUM 1-1/4" DIAMETER SINGLE OR MULTIPLE CONDUCTOR TYPE MI CABLE (SEE NOTE NO. 4 BELOW).
- I. ANY CABLES, METAL-CLAD CABLES, OR ARMORED CABLES CURRENTLY LISTED UNDER THE THROUGH PENETRATING PRODUCTS CATEGORY.
- J. MAXIMUM 4/C (+GRND) NO. 300 KCMIL ALUMINUM SER CABLE WITH PVC INSULATION AND JACKETING.
- K. MAXIMUM 4 PAIR NO. 22 AWG CAT 5 OR CAT 6 CABLE.
- L. MAXIMUM RG 6/U COAXIAL CABLE WITH FLUORINATED ETHYLENE JACKET.
- M. MAXIMUM 3/C NO. 8 AWG METAL-CLAD CABLE.

5. MINIMUM 5/8" DEPTH HILTI FS-ONE MAX INTUMESCENT FIRESTOP SEALANT.

- NOTES :**
- 1. MAXIMUM DIAMETER OF OPENING = 3-1/2".
 - 2. ANNULAR SPACE = MINIMUM 0", MAXIMUM 1-1/2".
 - 3. [NOT SHOWN] WHEN ANNULAR SPACE IS 0", APPLY MINIMUM 1/2" BEAD HILTI SEALANT OR PUTTY AT POINT OF CONTACT.
 - 4. A MINIMUM 1/8" SEPARATION SHOULD BE MAINTAINED BETWEEN MI CABLES AND ANY OTHER TYPE OF CABLE.
 - 5. CABLES TO FILL MINIMUM 0% TO MAXIMUM 45% CROSS-SECTIONAL AREA OF SLEEVE.
 - 6. SLEEVE MAY EXTEND UP TO 18" BEYOND WALL SURFACE.
 - 7. [OPTIONAL - NOT SHOWN] MINERAL WOOL (MIN. 4 PCF DENSITY) TIGHTLY PACKED, POLYURETHANE BACKER ROD, OR POLYETHYLENE BACKER ROD MAY BE INSTALLED RECESSED TO ACCOMMODATE FIRESTOP SEALANT OR PUTTY MAY BE USED AS BACKING MATERIAL.

**Hilti Firestop Systems**

HILTI, Inc.
Plano, Texas USA (800) 879-8000

Sheet	2 of 2
Scale	-
Date	Feb. 04, 2025

Drawing No.

WL
3506a

Saving Lives through Innovation and Education