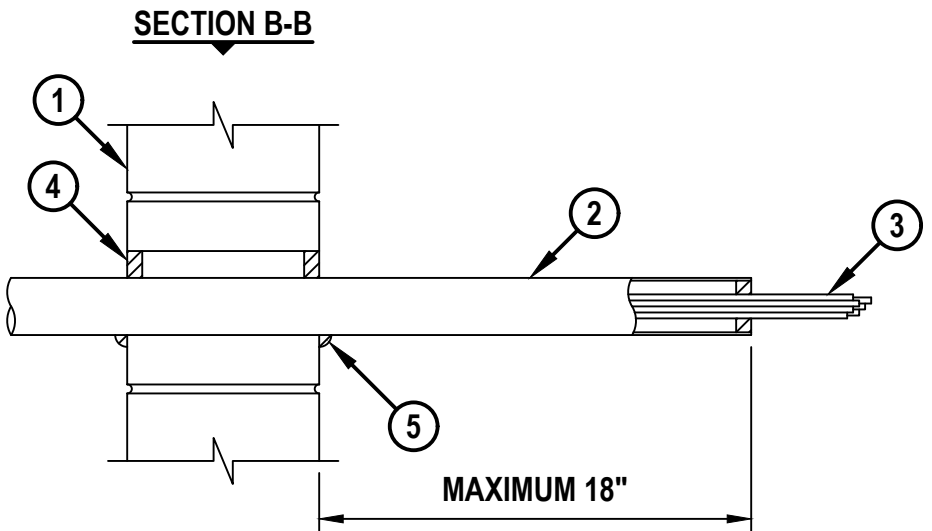
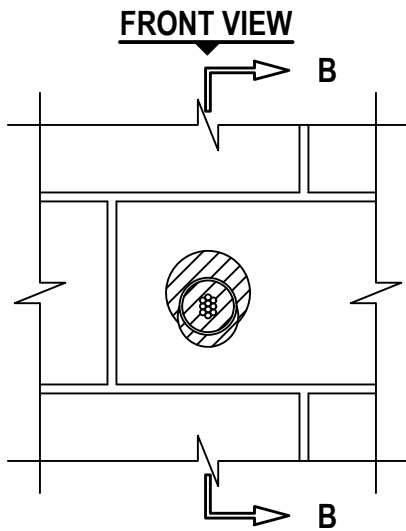
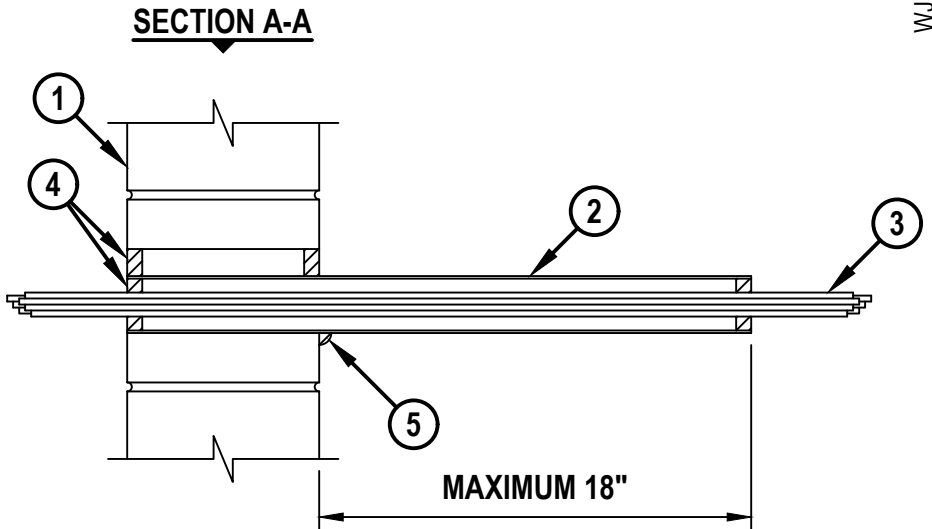
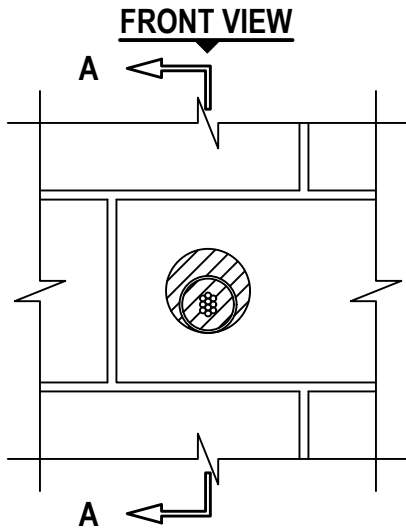


CABLE BUNDLE THROUGH CONCRETE WALL OR BLOCK WALL ASSEMBLY

F-RATING = 2-HR.

T-RATING = 0-HR.

WJ3297a.020405



CABLE BUNDLE THROUGH CONCRETE WALL OR BLOCK WALL ASSEMBLY

F-RATING = 2-HR.

T-RATING = 0-HR.

WJ3297a.020405

1. CONCRETE WALL ASSEMBLY (2-HR. FIRE-RATING) :
 - A. LIGHTWEIGHT OR NORMAL WEIGHT CONCRETE WALL (MINIMUM 6" THICK).
 - B. ANY UL/cUL CLASSIFIED CONCRETE BLOCK WALL ASSEMBLY.
2. MAXIMUM 2" NOMINAL DIAMETER ALUMINUM EMT, ALUMINUM PIPE (SCHEDULE 5 OR HEAVIER) OR ALUMINUM CONDUIT SLEEVE, FRICTION FIT OR CAST INTO WALL FLUSH WITH WALL SURFACES (SEE NOTE NO. 4 BELOW).
3. CABLE BUNDLE TO CONSIST OF ANY COMBINATION OF THE FOLLOWING :
 - A. MAXIMUM 7/C NO. 12 AWG POWER CABLE WITH PVC INSULATION AND OUTER JACKET.
 - B. MAXIMUM 25 PAIR NO. 24 AWG TELEPHONE CABLE WITH PVC INSULATION AND OUTER JACKET.
 - C. MAXIMUM RG/U (OR SMALLER) COAXIAL CABLE WITH POLYETHYLENE INSULATION AND PVC JACKET.
 - D. MAXIMUM RG 6/U COAXIAL CABLE WITH FLUORINATED ETHYLENE INSULATION AND JACKETING.
 - E. MULTIPLE FIBER OPTIC COMMUNICATION CABLE WITH PVC JACKET, HAVE A MAX OUTSIDE DIAM OF 5/8".
 - F. MAXIMUM FOUR PAIR NO. 22 AWG CAT 5 OR CAT 6 COMPUTER CABLES.
 - G. THROUGH PENETRATING PRODUCT - MAX THREE COPPER CONNECTOR NO. 8 AWG METAL-CLAD CABLE (AFC CABLE SYSTEMS INC.).
 - H. MAXIMUM 3/C (WITH GROUND)(OR SMALLER) NO. 8 AWG COPPER CONDUCTOR CABLE WITH PVC INSULATION AND JACKETING.
 - I. MAXIMUM 3/4" DIAM COPPER GROUND CABLE WITH OR WITHOUT A PVC JACKET.
 - J. FIRE RESISTIVE CABLES - MAXIMUM 1-1/4" DIAM SINGLE CONDUCTOR OR MULTI CONDUCTOR TYPE MI CABLE.
 - K. MAXIMUM 4/C WITH GROUND 300 KCMIL (OR SMALLER) ALUMINUM SER CABLE WITH PVC INSULATION AND JACKET.
 - L. MAXIMUM 3/C NO. 8 AWG METAL-CLAD CABLE.
 - L. MAXIMUM 5/8" DIAM FIBER-OPTIC CABLE WITH PVC JACKET.
 - M. ANY CABLES, METAL-CLAD OR ARMORED CABLE, CURRENTLY CLASSIFIED CLASSIFIED UNDER THE THROUGH PENETRANTS PRODUCTS CATEGORY.
4. MINIMUM 5/8" DEPTH HILTI FS-ONE MAX INTUMESCENT FIRESTOP SEALANT.
5. MINIMUM 1/2" BEAD HILTI FS-ONE MAX INTUMESCENT FIRESTOP SEALANT APPLIED AT WALL/SLEEVE INTERFACE WHEN STEEL SLEEVE EXTENDS BEYOND ONE OR BOTH SIDES OF WALL.

**Hilti Firestop Systems**

HILTI, Inc.
Plano, Texas USA (800) 879-8000

Sheet 2 of 3

Scale -

Date Feb. 04, 2025

Drawing No.

WJ
3297a

Saving Lives through Innovation and Education

CABLE BUNDLE THROUGH CONCRETE WALL OR BLOCK WALL ASSEMBLY

F-RATING = 2-HR.

T-RATING = 0-HR.

WJ3297a.020405

- NOTES :**
1. MAXIMUM DIAMETER OF OPENING = 3-1/2".
 2. ANNULAR SPACE = MINIMUM 0", MAXIMUM 1-1/2".
 3. CABLES TO FILL MAXIMUM 45% OF CROSS-SECTIONAL AREA OF OPENING.
 4. SLEEVE MAY EXTEND UP TO 18" BEYOND WALL SURFACES. AS AN OPTION, SLEEVE MAY BE CONTINUOUS ON ONE SIDE OF WALL ASSEMBLY.
 5. [OPTIONAL - NOT SHOWN] MINERAL WOOL (MIN. 4 PCF DENSITY) TIGHTLY PACKED, POLYURETHANE BACKER ROD, OR POLYETHYLENE BACKER ROD MAY BE INSTALLED RECESSED TO ACCOMMODATE FIRESTOP SEALANT OR PUTTY MAY BE USED AS BACKING MATERIAL.
 6. A MINIMUM 1/8" SEPARATION SHOULD BE MAINTAINED BETWEEN MI CABLES AND ANY OTHER TYPES OF CABLES.

**Hilti Firestop Systems**

HILTI, Inc.
Plano, Texas USA (800) 879-8000

Sheet	3 of 3
-------	--------

Scale	-
-------	---

Date	Feb. 04, 2025
------	---------------

Drawing No.

WJ
3297a

Saving Lives through Innovation and Education