

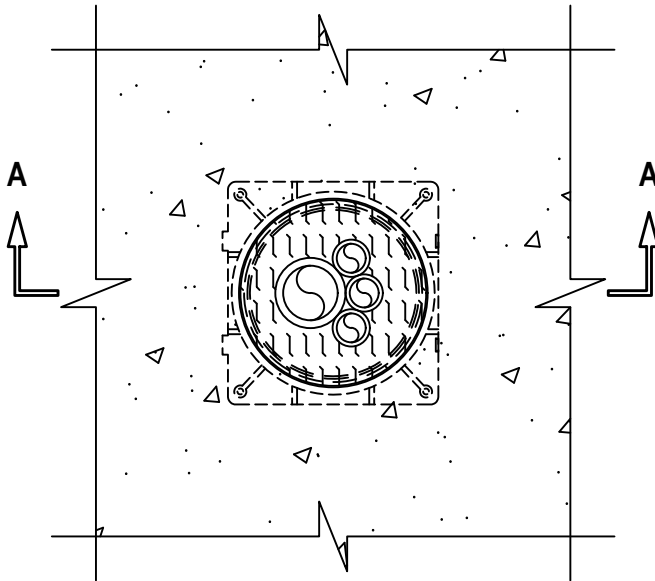
UL/cUL SYSTEM NO. F-B-2083
PEX LINES THROUGH CONCRETE FLOOR

F-RATING = 2-HR.

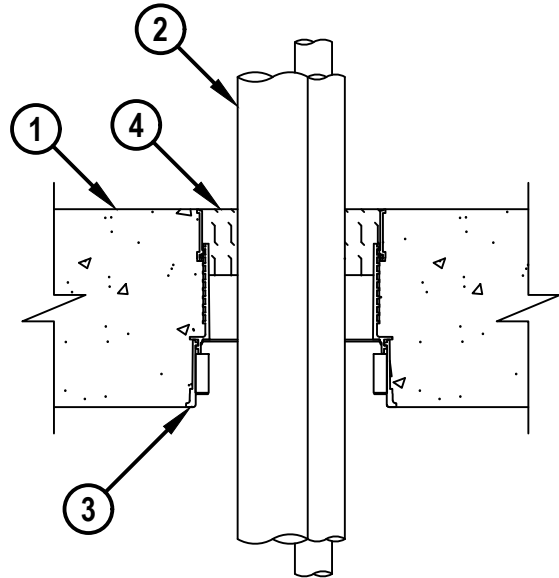
T-RATING = 0-HR.

NOTE : TESTED WITH A 2.5 Pa AND 50 Pa PRESSURE DIFFERENTIAL (SEE NOTE NO. 2 BELOW)

TOP VIEW



SECTION A-A



1. LIGHTWEIGHT OR NORMAL WEIGHT CONCRETE FLOOR (MINIMUM 6" THICK) (2-HR. FIRE-RATING).
2. MAXIMUM 2" NOMINAL DIAMETER CROSS-LINKED POLYETHYLENE (PEX) TUBING (SDR 9) (CLOSED OR VENTED PIPING SYSTEM) (MAX. QTY. = 4).
3. HILTI CFS-CID U [2", 3", OR 4"] OR CFS-CID U 2" CA CAST-IN FIRESTOP DEVICE CAST OR GROUTED INTO FLOOR (SEE NOTE NO. 2 BELOW).
4. MINIMUM 2" THICKNESS MINERAL WOOL (MIN. 4 PCF DENSITY) TIGHTLY PACKED, FLUSH WITH TOP OF FLOOR (SEE NOTE NO. 1 BELOW).

NOTES : 1. AS AN ALTERNATE TO MINERAL WOOL (ITEM 4), MINIMUM 2" DEPTH HILTI CF-AS CJP FILLER FOAM MAY BE USED.

2. HILTI CFS-CID U 2" CAST-IN FIRESTOP DEVICE IS FOR USE WITH 2.5 Pa ONLY.



Hilti Firestop Systems

HILTI, Inc.
Plano, Texas USA (800) 879-8000

Sheet	1 of 1
Scale	11/64" = 1"
Date	Oct. 02, 2023

Drawing No.

**FB
2083a**

Saving Lives through Innovation and Education

FB2083a.100223