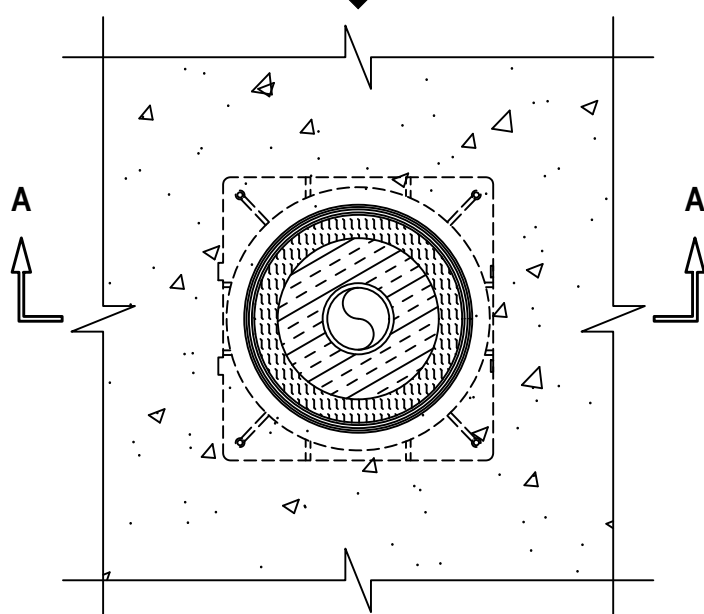
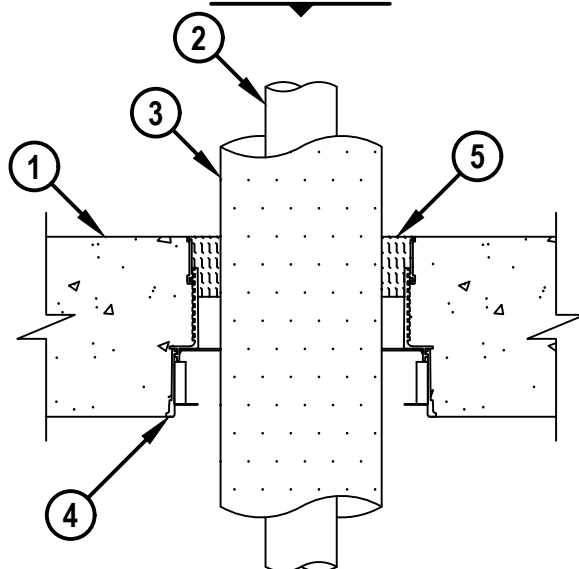


INSULATED METAL PIPE THROUGH CONCRETE FLOOR

F-RATING = 2-HR.

T-RATING = 2-HR.

FA5085a.092823

TOP VIEW**SECTION A-A**

1. LIGHTWEIGHT OR NORMAL WEIGHT CONCRETE FLOOR (MINIMUM 4-1/2" THICK) (2-HR. FIRE-RATING).
2. PENETRATING ITEM TO BE ONE OF THE FOLLOWING (SEE TABLE BELOW) :
 - A. MAXIMUM 2" NOMINAL DIAMETER STEEL PIPE (SCHEDULE 10 OR HEAVIER).
 - B. MAXIMUM 2" NOMINAL DIAMETER CAST OR DUCTILE IRON PIPE.
 - C. MAXIMUM 2" NOMINAL DIAMETER COPPER PIPE OR TUBING.
3. NOMINAL 1-1/2" THICK CELLULAR GLASS (FOAMGLASS) PIPE INSULATION WITH FOIL-SCRIM-KRAFT OR ALL SERVICE JACKET INSTALLED AS SHEATHING MATERIAL.
4. HILTI CFS-CID U [4" OR 6"] CAST-IN FIRESTOP DEVICE CAST OR GROUTED INTO CONCRETE FLOOR (SEE TABLE BELOW). DEVICE TO BE CUT FLUSH WITH TOP SURFACE OF CONCRETE FLOOR.
5. WHERE REQUIRED IN TABLE BELOW, INSTALL MINIMUM 2" THICKNESS MINERAL WOOL (MIN. 4 PCF DENSITY) TIGHTLY PACKED, FLUSH WITH TOP OF CFS-CID U DEVICE OR RECESSED TO ACCOMMODATE SEALANT.
6. [OPTIONAL - NOT SHOWN] MINIMUM 1/4" DEPTH HILTI CFS-S SIL GG FIRESTOP SILICONE SEALANT OR HILTI CFS-S SIL SL FIRESTOP SILICONE SEALANT FLUSH WITH TOP SURFACE OF DEVICE.

NOMINAL PIPE DIAMETER	FOAMGLASS THICKNESS	PRODUCT DESCRIPTION	PACKING MATERIAL (ITEM 5)
1/2"	1-1/2"	CFS-CID U 4"	YES
1"	1-1/2"	CFS-CID U 4"	NO
1-1/2"	1-1/2"	CFS-CID U 6"	YES
2"	1-1/2"	CFS-CID U 6"	NO

HILTI
Hilti Firestop Systems

HILTI, Inc.
Plano, Texas USA (800) 879-8000

Sheet 1 of 1
Scale 5/32" = 1"
Date Sep. 28, 2023

Drawing No.

FA
5085a

Saving Lives through Innovation and Education