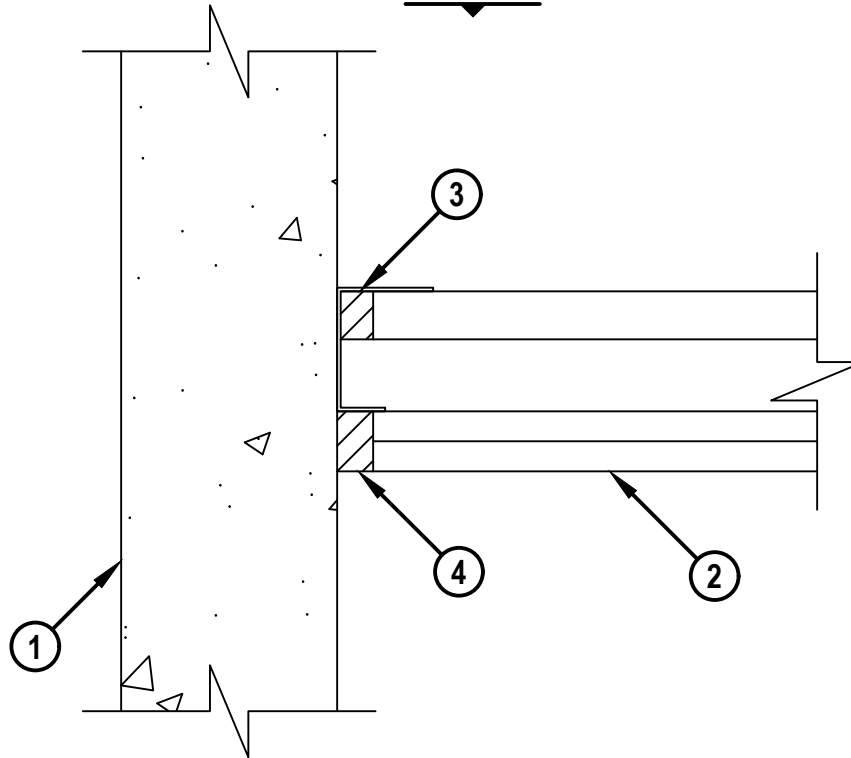


WALL TO WALL: GYPSUM SHAFT WALL TO CONCRETE WALL

ASSEMBLY RATING = 1-HR. OR 2-HR.

L-RATING AT AMBIENT = LESS THAN 1 CFM / LIN FT

L-RATING AT 400°F = LESS THAN 1 CFM / LIN FT

TOP VIEW

1. LIGHTWEIGHT OR NORMAL WEIGHT CONCRETE WALL ASSEMBLY (MINIMUM 4-1/2" THICK) (1-HR. OR 2-HR. FIRE-RATING).
2. GYPSUM SHAFT WALL ASSEMBLY (UL/cUL CLASSIFIED U400 OR V400 SERIES) (1-HR. OR 2-HR. FIRE-RATING) (2-HR. SHOWN) TO INCLUDE THE FOLLOWING CONSTRUCTION FEATURES :
 - A. "J" SHAPED CEILING RUNNER, MINIMUM 2-1/2" WIDE WITH LEGS OF MINIMUM 1-1/4" AND MINIMUM 2" (MINIMUM 24 GA.) FASTENED TO CONCRETE WALL WITH STEEL FASTENERS AT MAXIMUM 24" O.C.
 - B. "C-T", "I", OR "C-H" SHAPED STUDS (MINIMUM 2-1/2" WIDE, MINIMUM 24 GA.) WITH FIRST STUD ADJACENT TO CONCRETE WALL ASSEMBLY LOCATED MAXIMUM 4" FROM WALL FACE. STUDS TO BE SPACED MAXIMUM 24" O.C.
 - C. NOMINAL 1" THICK GYPSUM LINER PANEL. TYPE AND SHEET ORIENTATION AS SPECIFIED IN THE INDIVIDUAL UL/cUL DESIGN.
 - D. NOMINAL 1/2" OR 5/8" THICK GYPSUM WALLBOARD. TYPE, NUMBER OF LAYERS, AND SHEET ORIENTATION AS SPECIFIED IN THE INDIVIDUAL UL/cUL DESIGN.
3. MINIMUM 1" DEPTH HILTI CP 606 FLEXIBLE FIRESTOP SEALANT.
4. HILTI CP 606 FLEXIBLE FIRESTOP SEALANT INSTALLED FULL DEPTH OF GYPSUM BOARD.

NOTES : 1. MAXIMUM WIDTH OF JOINT = 1".**2. SHAFT WALL MAY BE PERPENDICULAR OR PARALLEL TO CONCRETE WALL.****Hilti Firestop Systems**

HILTI, Inc.
Plano, Texas USA (800) 879-8000

Sheet	1 of 1
Scale	1/4" = 1"
Date	Apr. 23, 2024

Drawing No.

WWS
0059b
Saving Lives through Innovation and Education