

# WALL TO WALL JOINT : GYPSUM WALL TO CONCRETE OR BLOCK WALL ASSEMBLY

ASSEMBLY RATING = 1-HR., 2-HR., 3-HR., OR 4-HR.

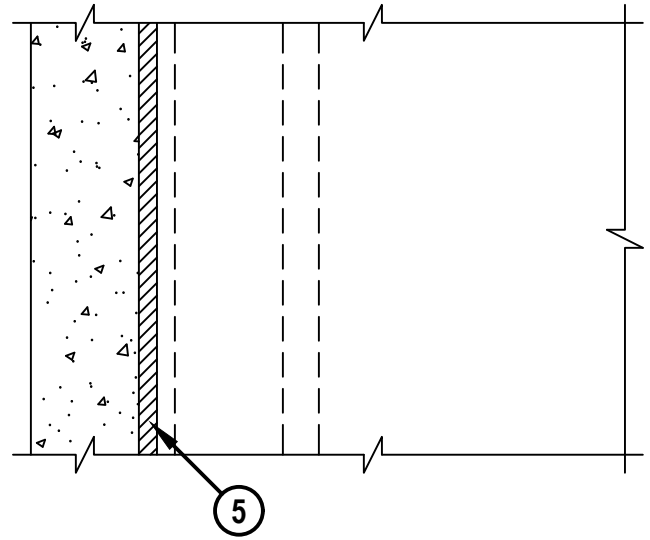
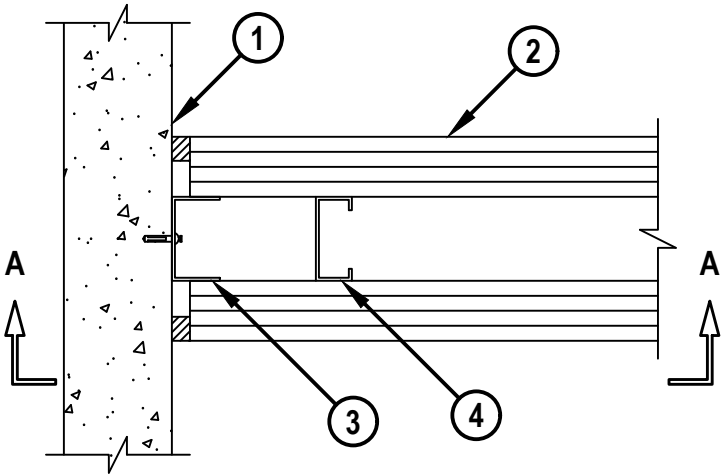
CLASS II MOVEMENT CAPABILITIES - 19% COMPRESSION OR EXTENSION, 33% COMPRESSION OR 16% EXTENSION, OR 43% COMPRESSION (SEE NOTE NO. 1 BELOW)

L-RATING AT AMBIENT = LESS THAN 1 CFM / LIN FT (SEE NOTE NO. 3 BELOW)

L-RATING AT 400°F = LESS THAN 1 CFM / LIN FT (SEE NOTE NO. 3 BELOW)

TOP VIEW

SECTION A-A



WWD0040f.042324



Hilti Firestop Systems

HILTI, Inc.  
Plano, Texas USA (800) 879-8000

Sheet	1 of 2
Scale	1/8" = 1"
Date	Apr. 23, 2024

Drawing No.

**WWD**  
**0040f**

*Saving Lives through Innovation and Education*

**WALL TO WALL JOINT : GYPSUM WALL TO CONCRETE OR BLOCK WALL ASSEMBLY**

ASSEMBLY RATING = 1-HR., 2-HR., 3-HR., OR 4-HR.

CLASS II MOVEMENT CAPABILITIES - 19% COMPRESSION OR EXTENSION, 33% COMPRESSION OR 16% EXTENSION, OR 43% COMPRESSION (SEE NOTE NO. 1 BELOW)

L-RATING AT AMBIENT = LESS THAN 1 CFM / LIN FT (SEE NOTE NO. 3 BELOW)

L-RATING AT 400°F = LESS THAN 1 CFM / LIN FT (SEE NOTE NO. 3 BELOW)

WWD0040f.042324

**1. CONCRETE WALL ASSEMBLY :**

A. LIGHTWEIGHT OR NORMAL WEIGHT CONCRETE WALL (MINIMUM 4-1/2" THICK).

B. ANY UL/cUL CLASSIFIED CONCRETE BLOCK WALL.

**2. GYPSUM WALL ASSEMBLY (UL/cUL CLASSIFIED U400, V400, OR W400 SERIES) (1-HR., 2-HR., 3-HR., OR 4-HR. FIRE-RATING) (4-HR. SHOWN). HOURLY RATING OF THE JOINT SYSTEM IS EQUAL TO THE HOURLY RATING OF THE WALLS.****3. WALL RUNNER (MINIMUM 25 GA.) SECURED TO WALL ASSEMBLY WITH STEEL CONCRETE FASTENERS (SPACED 12" O.C.).****4. STEEL STUDS (MINIMUM 3-1/2" WIDE), CUT 1/2" TO 3/4" LESS IN LENGTH THAN ASSEMBLY HEIGHT, NESTING IN CEILING RUNNER WITHOUT ATTACHMENT. FIRST STUD ADJACENT TO CONCRETE WALL SHALL NOT EXCEED 4" FROM WALL FACE.****5. HILTI CP 601S ELASTOMERIC FIRESTOP SEALANT, HILTI CP 606 FLEXIBLE FIRESTOP SEALANT, OR HILTI CFS-S SIL GG FIRESTOP SILICONE SEALANT :**

A. MINIMUM 5/8" DEPTH OF SEALANT FOR 1-HR. AND 2-HR. FIRE-RATING.

B. MINIMUM 1" DEPTH OF SEALANT FOR 3-HR. AND 4-HR. FIRE-RATING.

**NOTES : 1. ALLOWABLE JOINT WIDTHS TO BE DETERMINED AS FOLLOWS :**

A. FOR 1-HR. OR 2-HR. WALLS TO ACCOMMODATE MAXIMUM 19% COMPRESSION OR EXTENSION, MAXIMUM WIDTH OF JOINT = 1".

B. FOR 3-HR. OR 4-HR. WALLS TO ACCOMMODATE MAXIMUM 33% COMPRESSION OR 16% EXTENSION, MAXIMUM WIDTH OF JOINT = 3/4".

C. FOR 3-HR. OR 4-HR. WALLS TO ACCOMMODATE MAXIMUM 43% COMPRESSION ONLY, MAXIMUM WIDTH OF JOINT = 7/8".

2. [OPTIONAL, NOT SHOWN] MINERAL WOOL, FIBERGLASS, OR POLYURETHANE/POLYETHYLENE FOAM BACKER ROD MAY BE USED AS A BACKER IN 2-HR., 3-HR., AND 4-HR. WALLS.

3. L-RATING ONLY APPLIES WHEN HILTI CP 606 FLEXIBLE FIRESTOP SEALANT IS USED.

**Hilti Firestop Systems**HILTI, Inc.  
Plano, Texas USA (800) 879-8000

Sheet 2 of 2

Scale -

Date Apr. 23, 2024

Drawing No.

**WWD  
0040f***Saving Lives through Innovation and Education*