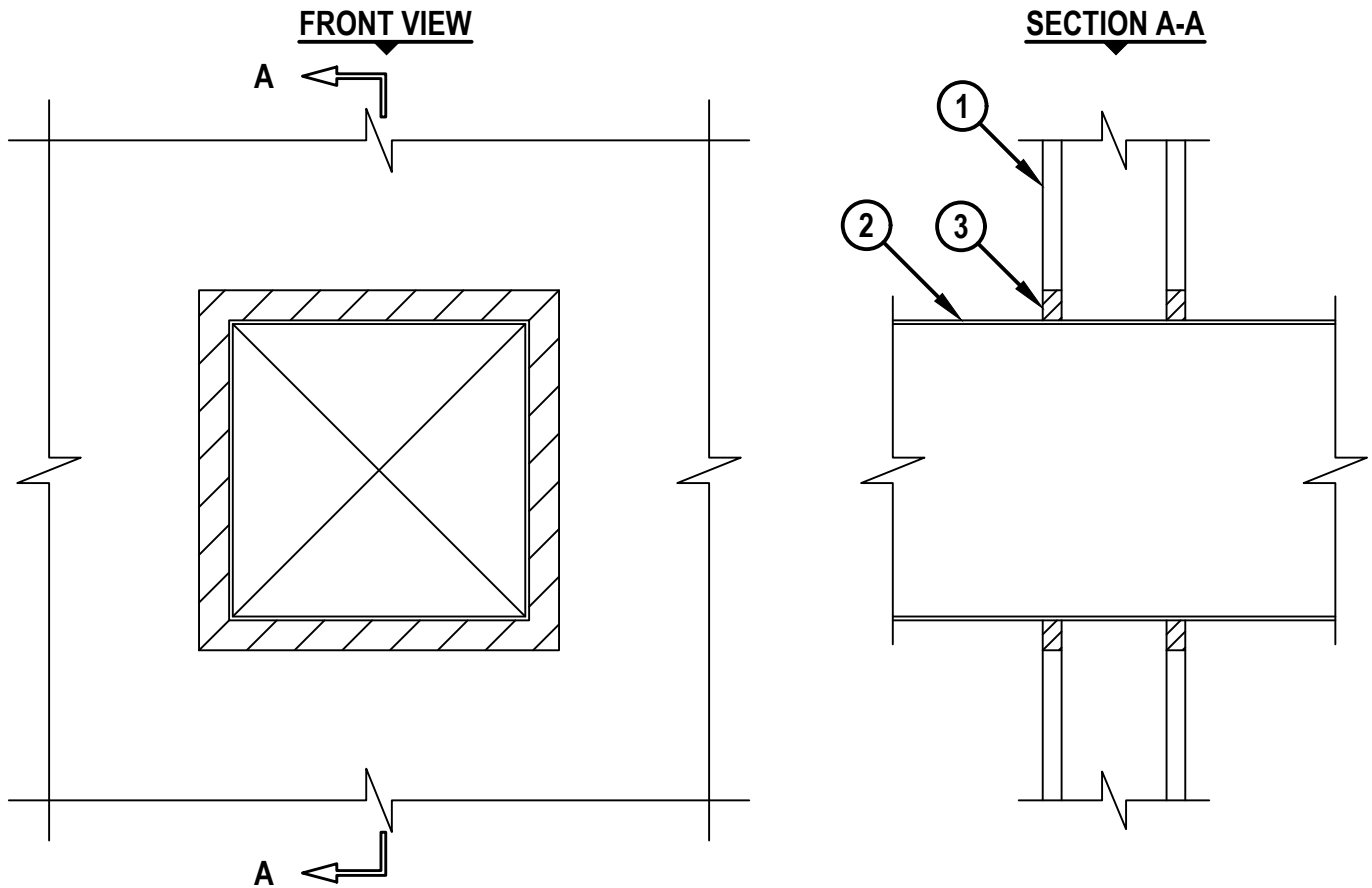


**SHEET METAL DUCT THROUGH GYPSUM WALL ASSEMBLY**

F-RATING = 1-HR.  
T-RATING = 1/2-HR.

WL7159b.081722



1. GYPSUM WALL ASSEMBLY (UL/cUL CLASSIFIED U300 OR U400 SERIES) (1-HR. FIRE-RATING) TO INCLUDE THE FOLLOWING CONSTRUCTION FEATURES :
  - A. [NOT SHOWN] WOOD STUDS TO CONSIST OF NOMINAL 2" x 4" LUMBER (SPACED MAXIMUM 16" OC). STEEL STUDS TO BE MINIMUM 3-1/2" WIDE (SPACED MAXIMUM 24" OC).
  - B. NOMINAL 5/8" THICK GYPSUM WALLBOARD. TYPE, NUMBER OF LAYERS, AND SHEET ORIENTATION AS SPECIFIED IN THE INDIVIDUAL UL DESIGN.
2. MAXIMUM 10" x 10" RECTANGULAR SHEET METAL DUCT (MIN. 28 GA.) (NOT FOR USE IN DUCT SYSTEMS CONTAINING A FIRE DAMPER.)
3. MINIMUM 5/8" DEPTH HILTI FS-ONE MAX INTUMESCENT FIRESTOP SEALANT OR HILTI CP 606 FLEXIBLE FIRESTOP SEALANT FLUSH WITH BOTH SURFACES OF WALL.

NOTES : 1. MAXIMUM SIZE OF OPENING = 12" x 12".  
2. ANNULAR SPACE = MINIMUM 1/4", MAXIMUM 1".

 <b>Hilti Firestop Systems</b>	HILTI, Inc. Plano, Texas USA (800) 879-8000	Sheet 1 of 1 Scale 5/32" = 1" Date Aug. 17, 2022	Drawing No. <b>WL 7159b</b>
	<b>Saving Lives through Innovation and Education</b>		