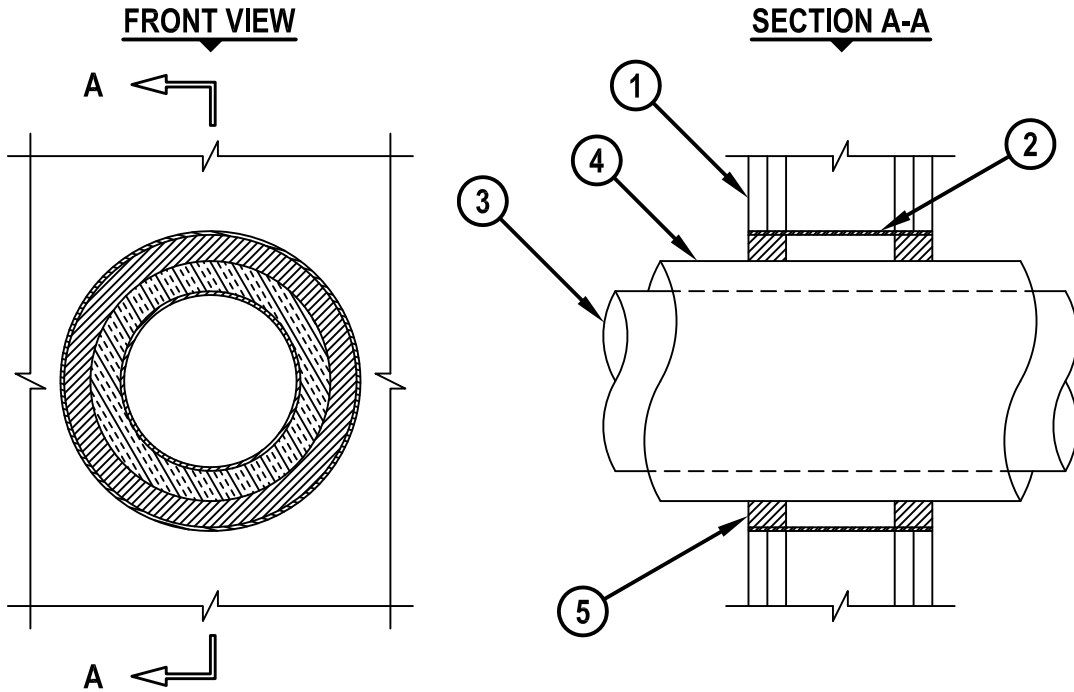


INSULATED METAL DUCT (WITHOUT DAMPER) THROUGH GYPSUM WALL ASSEMBLY

F-RATING = 2-HR.
T-RATING = 1-1/2-HR.

WL7018c.011415



1. GYPSUM WALL ASSEMBLY (UL/cUL CLASSIFIED U300 OR U400 SERIES) (2-HR. FIRE-RATING).
2. MAXIMUM 10" NOMINAL DIAMETER SHEET METAL SLEEVE (MIN. 28 GA. THICKNESS).
3. MAXIMUM 6" NOMINAL DIAMETER SHEET METAL DUCT (MIN. 28 GA. THICKNESS).
(NOT FOR USE IN DUCT SYSTEMS CONTAINING A DAMPER)
4. MAXIMUM 1" THICK GLASS FIBER PIPE INSULATION.
5. MINIMUM 1-1/4" DEPTH HILTI FS-ONE MAX OR FS-ONE INTUMESCENT FIRESTOP SEALANT.

NOTES : 1. ANNULAR SPACE = MINIMUM 0", MAXIMUM 1".
2. WITH 0" ANNULAR SPACE, APPLY MINIMUM 1/2" BEAD HILTI FS-ONE MAX OR FS-ONE INTUMESCENT FIRESTOP SEALANT AT POINT OF CONTACT.



HILTI, Inc.
Tulsa, Oklahoma USA (800) 879-8000

Sheet	1 of 1
Scale	3/16" = 1"
Date	Jan. 14, 2015

Drawing No.
**WL
7018c**