

UL/cUL SYSTEM NO. W-L-1054

## METAL PIPE THROUGH GYPSUM WALL ASSEMBLY

F-RATING = 1-HR. OR 2-HR. (SEE NOTES BELOW)

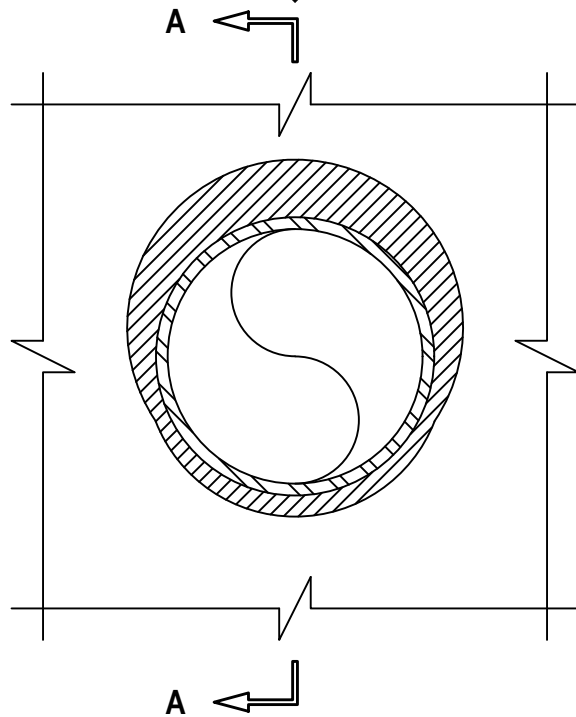
T-RATING = 0-HR. OR 1/2-HR. (SEE NOTES BELOW)

L-RATING AT AMBIENT = LESS THAN 1 CFM / SQ FT

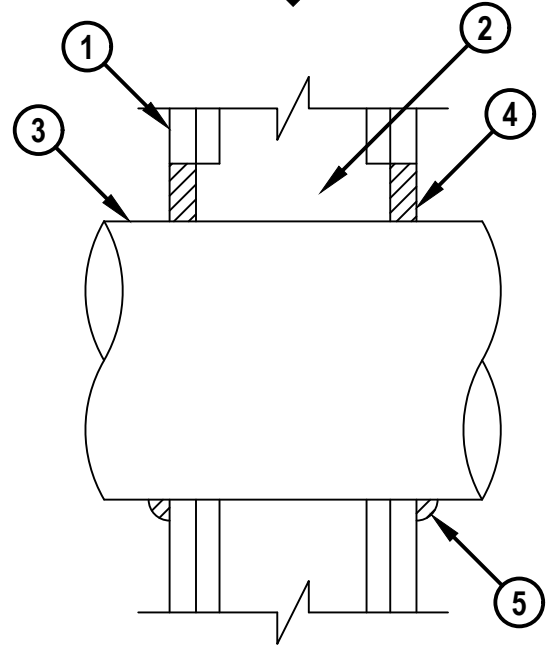
L-RATING AT 400°F = LESS THAN 1 CFM / SQ FT

WL 1054x. 123125

FRONT VIEW



SECTION A-A



**Hilti Firestop Systems**

HILTI, Inc.  
Plano, Texas USA (800) 879-8000

Sheet 1 of 2

Scale 7/32" = 1"

Date Dec. 31, 2025

Drawing No.

**WL  
1054x**

***Saving Lives through Innovation and Education***

**METAL PIPE THROUGH GYPSUM WALL ASSEMBLY**

F-RATING = 1-HR. OR 2-HR. (SEE NOTES BELOW)  
 T-RATING = 0-HR. OR 1/2-HR. (SEE NOTES BELOW)  
 L-RATING AT AMBIENT = LESS THAN 1 CFM / SQ FT  
 L-RATING AT 400°F = LESS THAN 1 CFM / SQ FT

WL 1054x. 123125

1. GYPSUM WALL ASSEMBLY (UL/cUL CLASSIFIED U300 OR U400 SERIES) (1-HR. OR 2-HR. FIRE-RATING) (2-HR. SHOWN).
2. [NOT SHOWN] WOOD STUDS TO CONSIST OF NOMINAL 2" x 4" LUMBER. STEEL STUDS TO BE MINIMUM 2-1/2" WIDE (SEE NOTE BELOW).
3. PENETRATING ITEM TO BE ONE OF THE FOLLOWING :
  - A. MAXIMUM 30" DIAMETER STEEL PIPE (SCHEDULE 10 OR HEAVIER).
  - B. MAXIMUM 30" DIAMETER STAINLESS STEEL PIPE (SCHEDULE 10 OR HEAVIER).
  - C. MAXIMUM 30" DIAMETER CAST IRON PIPE.
  - D. MAXIMUM 6" NOMINAL DIAMETER COPPER PIPE (REGULAR OR HEAVIER).
  - E. MAXIMUM 6" DIAMETER COPPER TUBING (TYPE L OR HEAVIER).
  - F. MAXIMUM 6" NOMINAL DIAMETER STEEL CONDUIT.
  - G. MAXIMUM 4" NOMINAL DIAMETER STEEL EMT.
  - H. MAXIMUM 2" NOMINAL DIAMETER ALUMINUM EMT.
  - I. MAXIMUM 2" NOMINAL DIAMETER ALUMINUM CONDUIT.
  - J. MAXIMUM 2" NOMINAL DIAMETER ALUMINUM PIPE (SCHEDULE 5 OR HEAVIER).
4. MINIMUM 5/8" DEPTH HILTI FS-ONE MAX INTUMESCENT FIRESTOP SEALANT.
5. MINIMUM 1/2" BEAD HILTI FS-ONE MAX INTUMESCENT FIRESTOP SEALANT APPLIED AT POINT OF CONTACT.

**NOTES : 1. MAXIMUM DIAMETER OF OPENING :**

- A. 32-1/4" FOR STEEL STUD WALLS.
- B. 14-1/2" FOR WOOD STUD WALLS.
2. ANNULAR SPACE (PENETRATIONS 2A THROUGH 2G) = MINIMUM 0", MAXIMUM 2-1/4".
3. ANNULAR SPACE (PENETRATIONS 2H THROUGH 2J) = MINIMUM 0", MAXIMUM 1-1/2".
4. PENETRATIONS 2A THROUGH 2G MAY BE INSTALLED WITH CONTINUOUS POINT OF CONTACT.
5. WHEN PENETRATIONS 2H THROUGH 2J ARE INSTALLED, STEEL STUDS TO BE MINIMUM 3-5/8" WIDE.
6. WHEN PENETRATIONS 2H THROUGH 2J ARE INSTALLED, T-RATING IS 1/2-HR.
7. WHEN PENETRATIONS 2H THROUGH 2J ARE INSTALLED, THE CAN/ULC-S115 TESTING STANDARD IS NOT APPLICABLE.

**Hilti Firestop Systems**

HILTI, Inc.  
 Plano, Texas USA (800) 879-8000

Sheet	2 of 2
-------	--------

Scale	-
-------	---

Date	Dec. 31, 2025
------	---------------

Drawing No.

**WL**  
**1054x**

***Saving Lives through Innovation and Education***