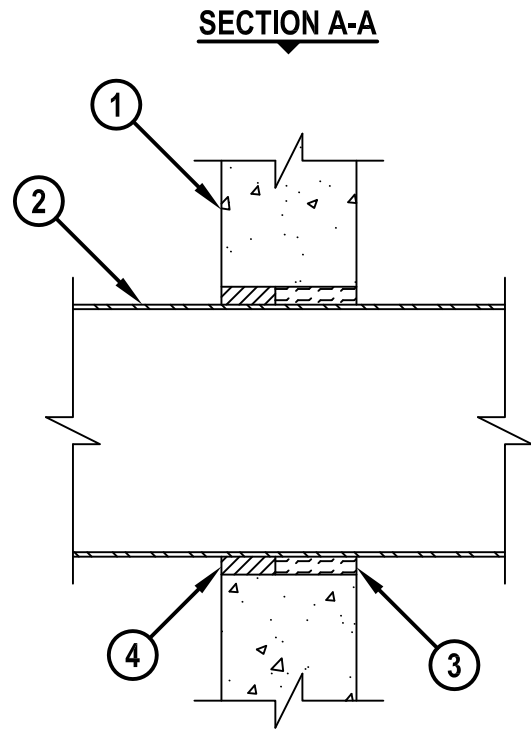
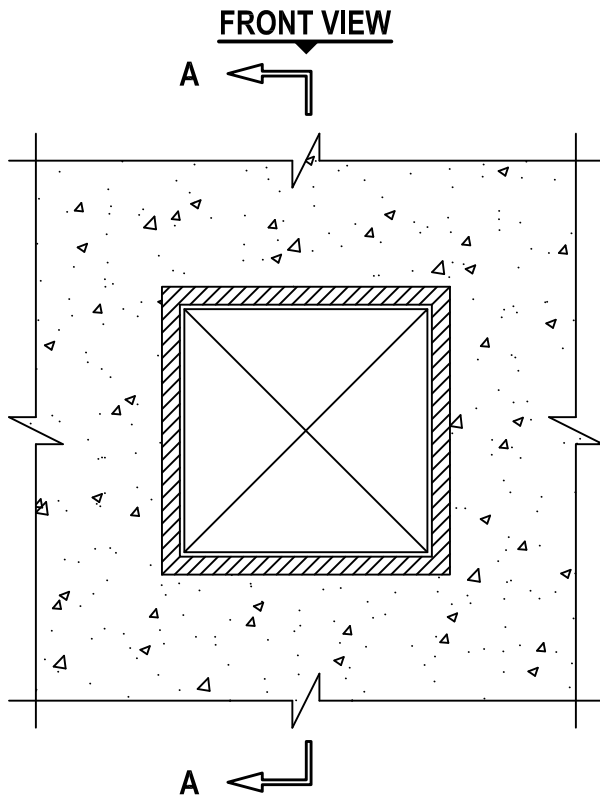


**METAL DUCT THROUGH CONCRETE WALL OR CONCRETE BLOCK WALL ASSEMBLY**

F-RATING = 1-HR. OR 2-HR.

T-RATING = 0-HR.

WJ7039b.011515



1. CONCRETE WALL ASSEMBLY (1-HR. OR 2-HR. FIRE-RATING) (2-HR. SHOWN) :
  - A. LIGHTWEIGHT OR NORMAL WEIGHT CONCRETE WALL (MINIMUM 3-3/4" THICK).
  - B. ANY UL/cUL CLASSIFIED CONCRETE BLOCK WALL.
2. MAXIMUM 7" x 7" SHEET METAL DUCT (MIN. 24 GA.).  
 (NOTE : NOT FOR USE IN DUCT SYSTEMS CONTAINING A FIRE DAMPER)
3. MINIMUM 1-5/8" OR 2-1/4" THICKNESS MINERAL WOOL (MIN. 4 PCF DENSITY) TIGHTLY PACKED AND RECESSED ON ONE SIDE OF WALL FOR 1-HR. OR 2-HR. FIRE-RATED WALL, RESPECTIVELY.
4. MINIMUM 1-1/2" DEPTH HILTI FS-ONE MAX OR FS-ONE INTUMESCENT FIRESTOP SEALANT.

NOTES : 1. MAXIMUM SIZE OF OPENING = 8" x 8".  
 2. ANNULAR SPACE = MINIMUM 1/4", MAXIMUM 3/4".  
 3. THIS FIRESTOP SYSTEM WAS DESIGNED AND TESTED FOR APPLICATIONS IN WHICH THERE IS LIMITED OR NO ACCESS AVAILABLE ON ONE SIDE OF WALL.



HILTI, Inc.  
 Tulsa, Oklahoma USA (800) 879-8000

Sheet	1 of 1
Scale	3/16" = 1"
Date	Jan. 15, 2015

Drawing No.  
**WJ**  
**7039b**