

METAL PIPE THROUGH CONCRETE WALL OR CONCRETE BLOCK WALL ASSEMBLY

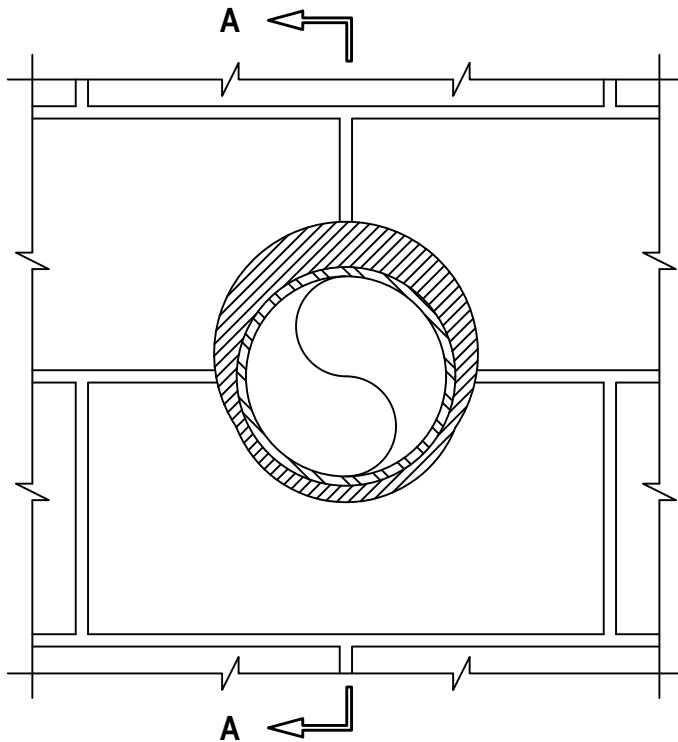
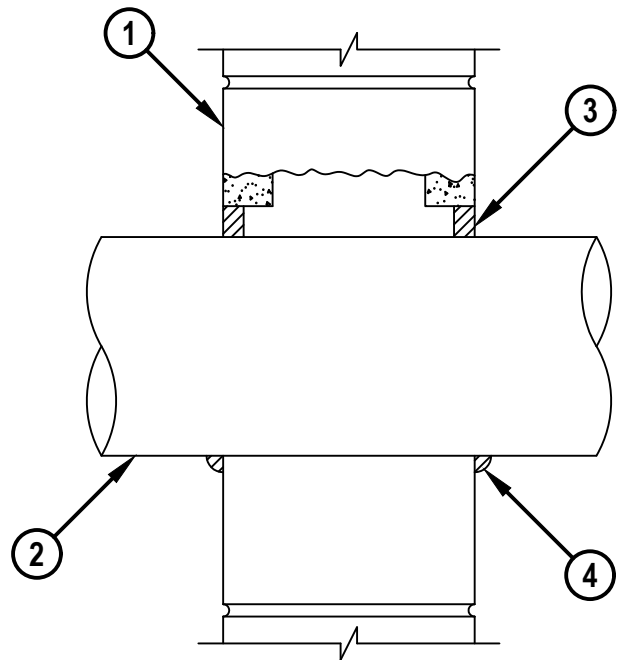
F-RATING = 1-HR. OR 2-HR.

T-RATING = 0-HR. OR 1/2-HR. (SEE NOTES BELOW)

L-RATING AT AMBIENT = LESS THAN 1 CFM / SQ FT

L-RATING AT 400° F = LESS THAN 1 CFM / SQ FT

WJ1067i.020525

FRONT VIEW**SECTION A-A**

METAL PIPE THROUGH CONCRETE WALL OR CONCRETE BLOCK WALL ASSEMBLY

F-RATING = 1-HR. OR 2-HR.

T-RATING = 0-HR. OR 1/2-HR. (SEE NOTES BELOW)

L-RATING AT AMBIENT = LESS THAN 1 CFM / SQ FT

L-RATING AT 400° F = LESS THAN 1 CFM / SQ FT

WJ1067i.020525

1. CONCRETE WALL ASSEMBLY (1-HR. OR 2-HR. FIRE-RATING) :
 - A. LIGHTWEIGHT OR NORMAL WEIGHT CONCRETE WALL (MIN. 3-3/4" THICK, FOR 1-HR. FIRE-RATING).
 - B. LIGHTWEIGHT OR NORMAL WEIGHT CONCRETE WALL (MIN. 5" THICK, FOR 2-HR. FIRE-RATING).
 - C. ANY UL/cUL CLASSIFIED CONCRETE BLOCK WALL.
2. PENETRATING ITEM TO BE ONE OF THE FOLLOWING :
 - A. MAXIMUM 30" NOMINAL DIAMETER STEEL PIPE (SCHEDULE 10 OR HEAVIER).
 - B. MAXIMUM 30" NOMINAL DIAMETER CAST IRON PIPE.
 - C. MAXIMUM 6" NOMINAL DIAMETER COPPER PIPE.
 - D. MAXIMUM 6" NOMINAL DIAMETER STEEL CONDUIT.
 - E. MAXIMUM 4" NOMINAL DIAMETER STEEL EMT.
 - F. MAXIMUM 2" NOMINAL DIAMETER ALUMINUM EMT.
 - G. MAXIMUM 2" NOMINAL DIAMETER ALUMINUM CONDUIT.
 - H. MAXIMUM 2" NOMINAL DIAMETER ALUMINUM PIPE (SCH. 5 OR HEAVIER).
3. MINIMUM 5/8" DEPTH HILTI FS-ONE MAX INTUMESCENT FIRESTOP SEALANT.
4. MINIMUM 1/2" BEAD HILTI FS-ONE MAX INTUMESCENT FIRESTOP SEALANT APPLIED AT POINT OF CONTACT.

NOTES : 1. MAXIMUM DIAMETER OF OPENING = 32-1/4".

2. ANNULAR SPACE (PENETRATIONS 2A THROUGH 2E) = MINIMUM 0", MAXIMUM 2-1/4".

3. ANNULAR SPACE (PENETRATIONS 2F THROUGH 2H) = MINIMUM 0", MAXIMUM 1-1/2".

4. PENETRATIONS 2A THROUGH 2E MAY BE INSTALLED WITH CONTINUOUS POINT OF CONTACT.

5. WHEN PENETRATIONS 2F THROUGH 2H ARE INSTALLED, CONCRETE WALL ASSEMBLY SHALL BE MINIMUM 6" THICK FOR A 1-HR. OR 2-HR. F-RATING.

6. WHEN PENETRATIONS 2F THROUGH 2H ARE INSTALLED, THE T-RATING IS 1/2-HR.

7. WHEN PENETRATIONS 2F THROUGH 2H ARE INSTALLED, THE F-RATING IS 0-HR. UNDER THE CAN/ULC-S115 TESTING STANDARD.

**Hilti Firestop Systems**

HILTI, Inc.
Plano, Texas USA (800) 879-8000

| | |
|-------|---------------|
| Sheet | 2 of 2 |
| Scale | - |
| Date | Feb. 05, 2025 |

Drawing No.

WJ
1067i

Saving Lives through Innovation and Education