

UL/cUL SYSTEM NO. HW-D-0572

TOP OF WALL JOINT : GYPSUM SHAFT WALL ASSEMBLY

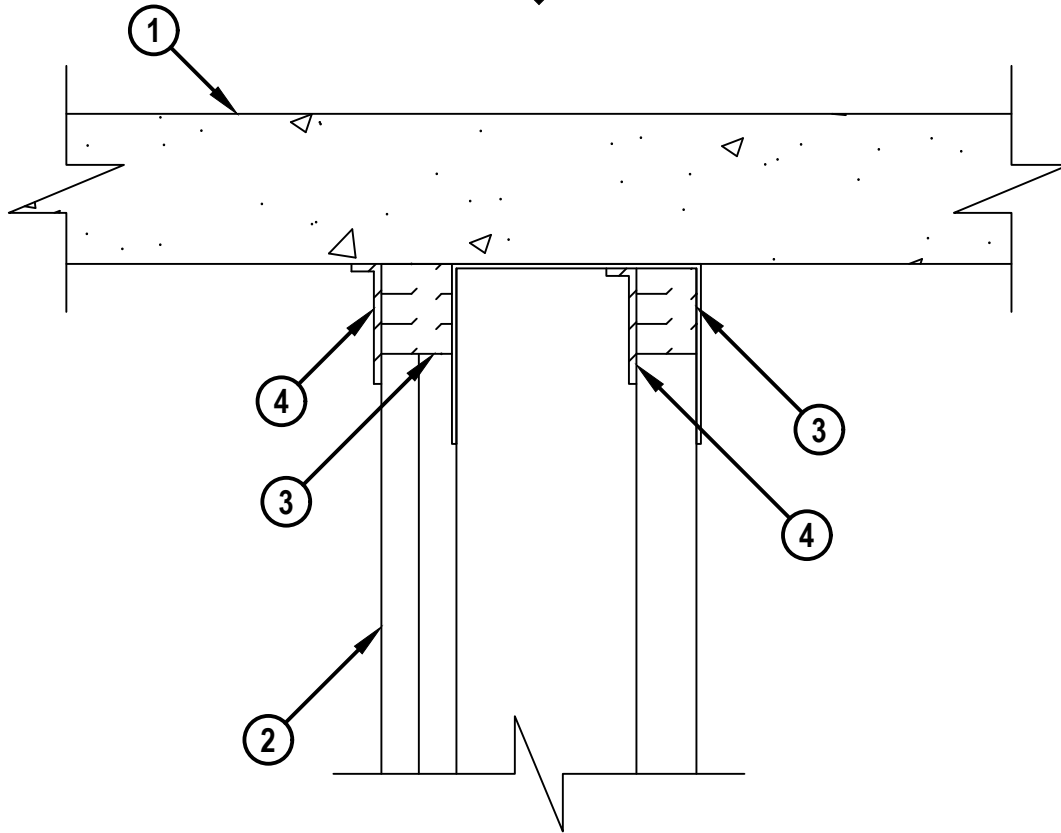
ASSEMBLY RATING = 1-HR. OR 2-HR.

L-RATING AT AMBIENT = LESS THAN 1 CFM / LIN FT

L-RATING AT 400°F = LESS THAN 1 CFM / LIN FT

CLASS II MOVEMENT CAPABILITIES - 50% COMPRESSION OR EXTENSION

CROSS-SECTIONAL VIEW



HWD0572c.042324



Hilti Firestop Systems

HILTI, Inc.
Plano, Texas USA (800) 879-8000

Sheet	1 of 2
Scale	5/16" = 1"
Date	Apr. 23, 2024

Drawing No.

**HWD
0572c**

Saving Lives through Innovation and Education

UL/cUL SYSTEM NO. HW-D-0572

TOP OF WALL JOINT : GYPSUM SHAFT WALL ASSEMBLY

ASSEMBLY RATING = 1-HR. OR 2-HR.

L-RATING AT AMBIENT = LESS THAN 1 CFM / LIN FT

L-RATING AT 400°F = LESS THAN 1 CFM / LIN FT

CLASS II MOVEMENT CAPABILITIES - 50% COMPRESSION OR EXTENSION

HWD0572c.042324

1. CONCRETE FLOOR ASSEMBLY (1-HR. OR 2-HR. FIRE-RATING) :
 - A. LIGHTWEIGHT OR NORMAL WEIGHT CONCRETE FLOOR (MINIMUM 2-1/2" THICK).
 - B. ANY UL/cUL CLASSIFIED PRECAST (HOLLOW-CORE) CONCRETE FLOOR (MINIMUM 6" THICK).
2. GYPSUM SHAFT WALL ASSEMBLY (UL/cUL CLASSIFIED U400 OR V400 SERIES) (1-HR. OR 2-HR. FIRE-RATING) (2-HR. SHOWN) TO INCLUDE THE FOLLOWING CONSTRUCTION FEATURES :
 - A. CEILING RUNNER, SIZED TO ACCOMMODATE STEEL STUDS. FLANGE HEIGHT OF CEILING RUNNER SHALL BE MINIMUM 1/4" GREATER THAN THE MAXIMUM EXTENDED JOINT WIDTH. RUNNER SECURED TO CONCRETE FLOOR WITH STEEL FASTENERS OR WELDS SPACED MAXIMUM 24" O/C.
 - B. "C-H" SHAPED STUDS (MINIMUM 4" WIDE, MINIMUM 25 GA.) CUT 3/4" TO 1" LESS IN LENGTH THAN ASSEMBLY HEIGHT, NESTING IN CEILING RUNNER WITHOUT ATTACHMENT.
 - C. NOMINAL 1" THICK GYPSUM LINER PANEL CUT 1-1/2" LESS IN LENGTH THAN ASSEMBLY HEIGHT. TYPE AND SHEET ORIENTATION AS SPECIFIED IN THE INDIVIDUAL UL DESIGN.
 - D. NOMINAL 5/8" THICK GYPSUM WALLBOARD CUT 1-1/2" LESS IN LENGTH THAN ASSEMBLY HEIGHT WITH SCREW ATTACHMENT 1" TO 1-1/2" BELOW THE BOTTOM OF THE CEILING RUNNER OR SLOTTED CEILING TRACK. TYPE, NUMBER OF LAYERS, AND SHEET ORIENTATION AS SPECIFIED IN THE INDIVIDUAL UL DESIGN.
3. HILTI CP 767 SPEED STRIPS COMPRESSED 50%, FLUSH WITH GYPSUM BOARD SURFACES (SEE NOTE NO. 2 BELOW).
4. MINIMUM 1/8" (WET) THICKNESS HILTI CFS-SP WB FIRESTOP JOINT SPRAY OR HILTI CP 672 SPEED SPRAY TO COMPLETELY COVER MINERAL WOOL AND OVERLAPPING MINIMUM 1/2" ONTO GYPSUM BOARD, CEILING RUNNER, AND CONCRETE FLOOR.

NOTES : 1. MAXIMUM WIDTH OF JOINT = 1-1/2".
2. AS AN ALTERNATE TO HILTI CP 767 SPEED STRIPS, MINERAL WOOL SAFING (MIN. 4 PCF DENSITY) COMPRESSED 50% MAY BE USED.
3. AS AN ALTERNATE TO CEILING RUNNER IN ITEM NO. 2A, CEILING RUNNERS, MANUFACTURED BY DBA SLIPTRACK SYSTEMS, BRADY CONSTRUCTION INNOVATIONS, CALIFORNIA EXPANDED METAL PRODUCTS COMPANY, SCAFCO, METAL-LITE, TELLING INDUSTRIES LLC, OR CLARKWESTERN BUILDING SYSTEMS, INC. MAY BE USED. WHEN ALTERNATE SLOTTED CEILING TRACKS ARE USED, CONSULT THE UL FIRE RESISTANCE DIRECTORY FOR INSTALLATION INSTRUCTIONS.



HILTI, Inc.
Plano, Texas USA (800) 879-8000

Sheet	2 of 2
Scale	-
Date	Apr. 23, 2024

Drawing No.

**HWD
0572c**

Saving Lives through Innovation and Education