

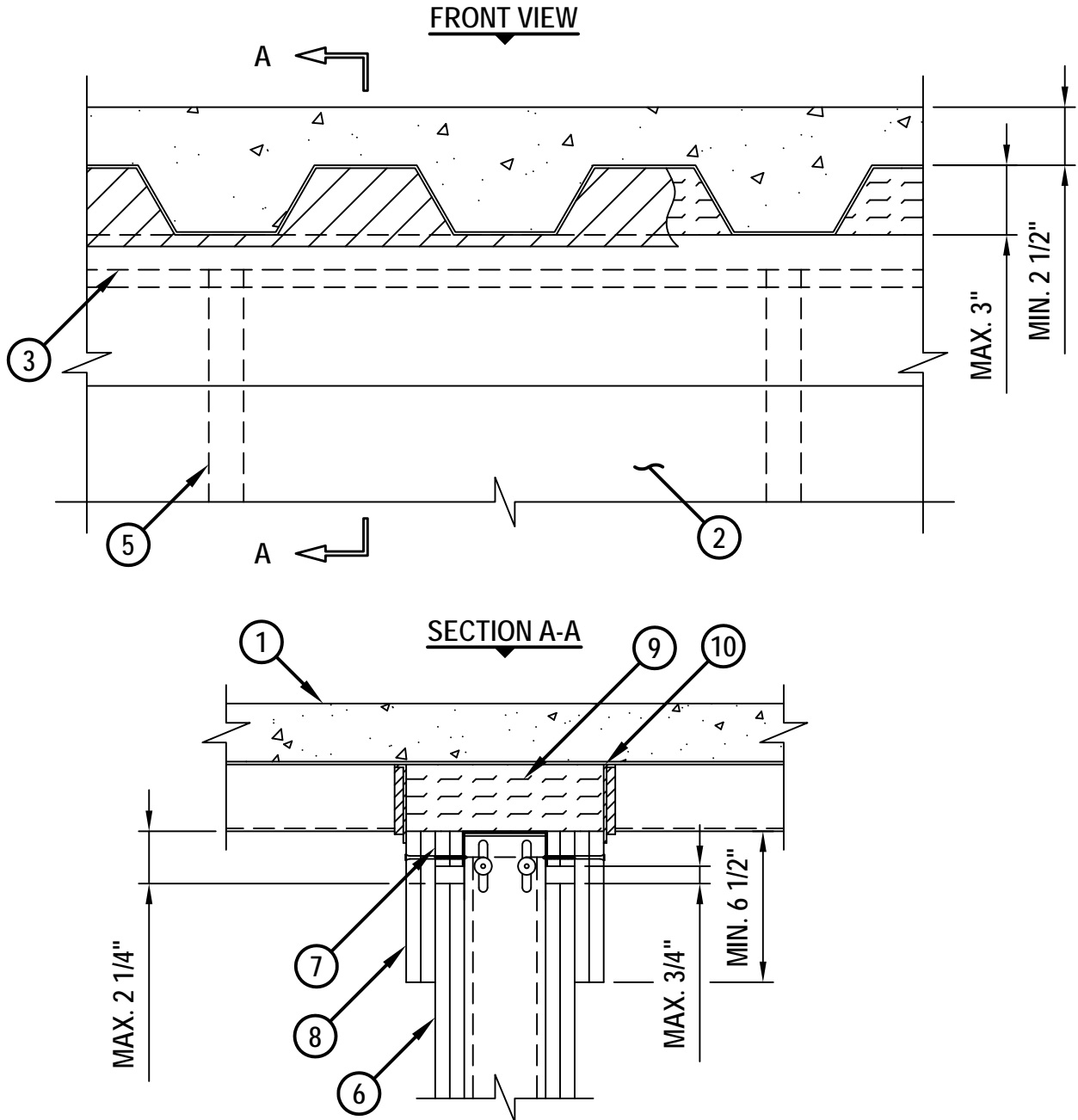
UL/cUL SYSTEM NO. HW-D-0460

TOP OF WALL JOINT : GYPSUM WALL ASSEMBLY

ASSEMBLY-RATING = 1-HR. OR 2-HR.

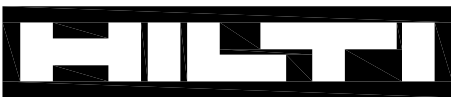
CLASS II MOVEMENT CAPABILITIES - 100% COMPRESSION OR 50% EXTENSION

HWDD0460d.050712



1. FLOOR OR ROOF ASSEMBLY (1-HR. OR 2-HR. FIRE-RATING) :

- A. LIGHTWEIGHT OR NORMAL WEIGHT CONCRETE FLOOR (MIN. 2-1/2" THICK) OVER METAL DECKING (UL/cUL CLASSIFIED D700 OR D900 SERIES).
- B. INSULATING CONCRETE (MIN. 2-1/4" THICK) OVER METAL DECKING (UL/cUL CLASSIFIED P900 SERIES).
- C. [NOT SHOWN] FLUTED STEEL ROOF DECK WITH SPRAY-APPLIED FIREPROOFING (UL/cUL CLASSIFIED P700 SERIES).



Hilti Firestop Systems

HILTI, Inc.
Tulsa, Oklahoma USA (800) 879-8000

Sheet	1 of 2
Scale	9/64" = 1"
Date	May 07, 2012

Drawing No.

**HWD
0460d**

Saving Lives through Innovation and Education

TOP OF WALL JOINT : GYPSUM WALL ASSEMBLY

ASSEMBLY-RATING = 1-HR. OR 2-HR.

CLASS II MOVEMENT CAPABILITIES - 100% COMPRESSION OR 50% EXTENSION

HWD0460d.050712

2. GYPSUM WALL ASSEMBLY (UL/cUL CLASSIFIED U400 OR V400 SERIES) (1-HR. OR 2-HR. FIRE-RATING) (2-HR. SHOWN).
3. CEILING RUNNER (1-1/2" FLANGES) FASTENED TO UNDERSIDE OF DECK WITH STEEL MASONRY ANCHORS, STEEL FASTENERS, OR WELDS (SPACED MAX. 24" O.C.).
4. STEEL STUDS (MINIMUM 3-1/2" WIDE) CUT 3/4" TO 1" LESS IN LENGTH THAN ASSEMBLY HEIGHT, NESTING IN CEILING RUNNER WITHOUT ATTACHMENT (SEE NOTE NO. 2 BELOW).
5. [OPTIONAL - NOT SHOWN] WHEN SPRAY-APPLIED FIREPROOFING IS USED, CEILING RUNNER MAY BE SECURED TO DECK WITH Z-SHAPED CLIPS (MIN. 20 GA.) WITH THE FOLLOWING DIMENSIONS : MINIMUM 1" LONG, BUT NOT EXCEEDING THE WIDTH OF THE WALL, BY 1-1/2" OR 2" LONG UPPER AND LOWER LEGS. SUPPORT CLIPS SPACED MAXIMUM 24" OC.
6. 5/8" OR 1-1/4" THICKNESS GYPSUM WALLBOARD AS SPECIFIED IN THE INDIVIDUAL UL DESIGN. TOP ROW OF SCREWS SHALL BE INSTALLED INTO STUDS 3-1/2" TO 4" BELOW THE BOTTOM PLANE OF FLOOR/ROOF.
7. WALL CLADDING - 5/8" OR 1-1/4" THICK GYPSUM WALLBOARD AS SPECIFIED IN THE INDIVIDUAL UL DESIGN. CLADDING TO BE BUTTED TIGHT TO VALLEY OF STEEL DECK AND EXTENDING DOWN TO BOTTOM OF THE CEILING RUNNER FASTENED TO CEILING RUNNER 24" C/C.
8. WALL CLADDING - 5/8" OR 1-1/4" THICK GYPSUM WALLBOARD AS SPECIFIED IN THE INDIVIDUAL UL DESIGN. CLADDING TO BE BUTTED TIGHT TO VALLEY OF STEEL DECK AND OVERLAPPING WALL MINIMUM 6-1/2" FASTENED TO CEILING RUNNER 6" C/C.
9. HILTI CP 777 SPEED PLUGS FRICTION FITTED TO COMPLETELY FILL FLUTE, FLUSH WITH OUTER SURFACES OF WALL CLADDING (SEE NOTE NO. 5 BELOW).
10. MINIMUM 1/8" (WET) THICKNESS HILTI CFS-SP WB FIRESTOP JOINT SPRAY OR HILTI CP 672 SPEED SPRAY TO COMPLETELY COVER MINERAL WOOL, OVERLAPPING MINIMUM 1/2" ONTO WALL CLADDING AND METAL DECK.

- NOTES :
1. MAXIMUM WIDTH OF JOINT = 3/4".
 2. AS AN ALTERNATE TO CEILING RUNNER IN ITEM NO. 3, CEILING RUNNERS, MANUFACTURED BY THE STEEL NETWORK, INC., MAY BE USED. WHEN ALTERNATE CEILING RUNNERS ARE USED, CONSULT THE UL FIRE RESISTANCE DIRECTORY FOR INSTALLATION INSTRUCTIONS.
 3. STEEL FLOOR UNITS MAY BE SPRAYED WITH A MIN. 5/16" THICKNESS TO MAX. 1-3/4" THICKNESS OF UL CLASSIFIED MONOKOTE TYPE MK-6/HY FIREPROOFING MANUFACTURED BY W.R. GRACE PRIOR TO OR AFTER INSTALLATION OF CEILING RUNNERS.
 4. WHEN THE STEEL DECK IS COATED WITH FIREPROOFING, HILTI FIRESTOP SPRAY SHALL OVERLAP THE WALL A MINIMUM 1/2" AND OVERLAP THE FIREPROOFING A MINIMUM 2" ON BOTH SIDES OF GYPSUM WALL ASSEMBLY.
 5. AS AN ALTERNATE TO HILTI CP 777 SPEED PLUGS, MINERAL WOOL (MIN. 4 PCF DENSITY) COMPRESSED 50% MAY BE USED.



HILTI, Inc.
Tulsa, Oklahoma USA (800) 879-8000

Sheet	2 of 2
Scale	-
Date	May 07, 2012

Drawing No.
**HWD
0460d**