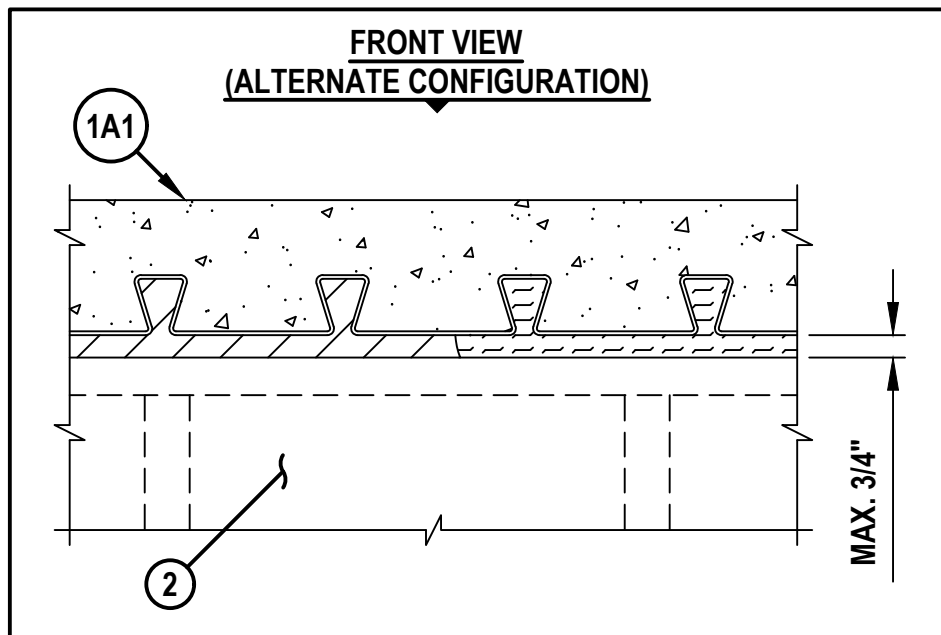
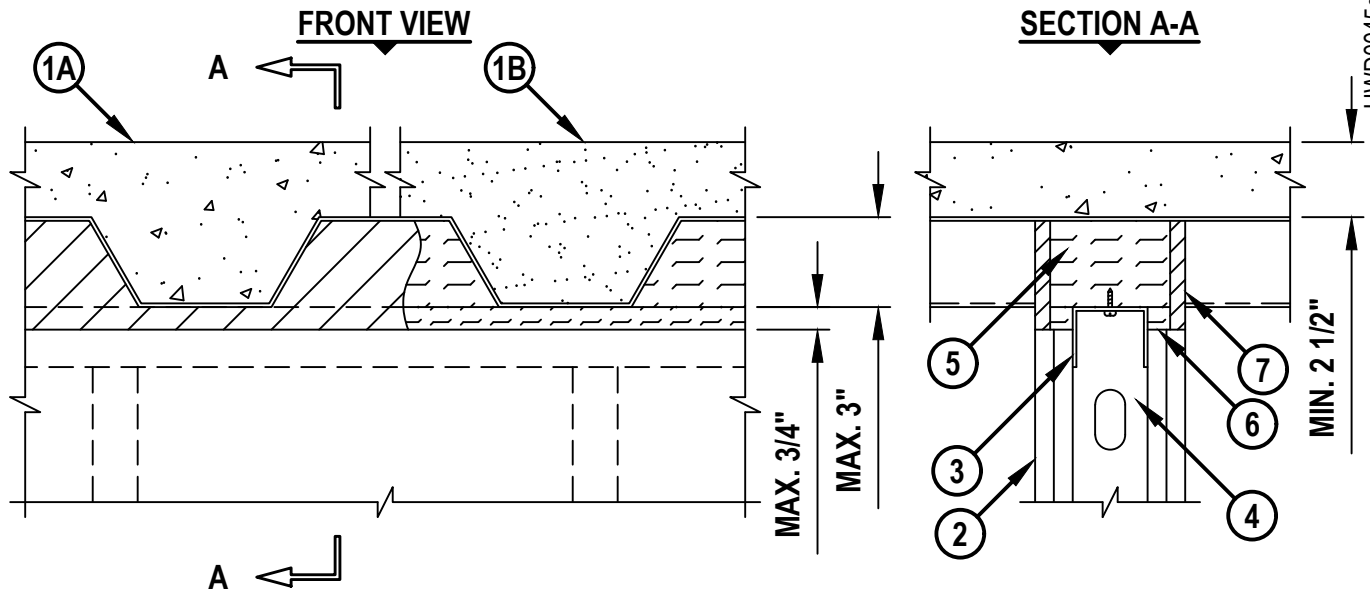


TOP OF WALL JOINT : GYPSUM WALL ASSEMBLY

ASSEMBLY RATING = 1-HR. OR 2-HR. (DEPENDING ON RATING OF WALL AND FLOOR ASSEMBLY)
 CLASS II MOVEMENT CAPABILITIES - 33% COMPRESSION OR EXTENSION

HWD0045q.082724



TOP OF WALL JOINT : GYPSUM WALL ASSEMBLY

ASSEMBLY RATING = 1-HR. OR 2-HR. (DEPENDING ON RATING OF WALL AND FLOOR ASSEMBLY)
CLASS II MOVEMENT CAPABILITIES - 33% COMPRESSION OR EXTENSION

HWD0045q.082724

1. FLOOR OR ROOF ASSEMBLY (1-HR. OR 2-HR. FIRE-RATING) :
 - A. LIGHTWEIGHT OR NORMAL WEIGHT CONCRETE FLOOR (MIN. 2-1/2" THICK) OVER METAL DECKING (UL/cUL CLASSIFIED D700 OR D900 SERIES).
 - A1. REINFORCED CONCRETE (MIN. 2-1/2" THICK) OVER COMPOSITE METAL DECK (MAX. 2-1/2" DEEP FLUTES) (BY EPIC METALS).
 - A2. REINFORCED CONCRETE (MIN. 2-1/2" THICK) OVER COMPOSITE METAL DECK (MAX. 2" DEEP FLUTES VERSA-DECK®) (BY NEW MILLENNIUM BUILDING SYSTEMS).
 - A3. STEEL FLOOR AND FORM UNITS (CONFIGURATION B) – COMPOSITE MAX 2 IN. (51 MM) DEEP GALV STEEL FLUTED UNITS. (VERCO DECKING INC – A NUCOR CO – TYPE 2.0D FORMLOK).
 - A4. STEEL FLOOR AND FORM UNITS (CONFIGURATION B) – COMPOSITE MAX 2 IN. (51 MM) DEEP GALV STEEL FLUTED UNITS. (VULCRAFT, DIV OF NUCOR CORP – TYPE 2.0D FORMLOK).
 - B. INSULATING CONCRETE (MIN. 2-1/2" THICK) OVER METAL DECKING (UL/cUL CLASSIFIED P900 SERIES).
 - C. [NOT SHOWN] FLUTED STEEL ROOF DECK (UL/cUL CLASSIFIED P700 OR P900 SERIES).
2. GYPSUM WALL ASSEMBLY (UL/cUL CLASSIFIED U400 OR V400 SERIES) (1-HR. OR 2-HR. FIRE-RATING).
3. CEILING RUNNER (MIN. 25 GA., FLANGE HEIGHT OF CEILING RUNNER SHALL BE MINIMUM 1/4" GREATER THAN MAXIMUM EXTENDED JOINT WIDTH) FASTENED TO UNDERSIDE OF THE DECK WITH STEEL FASTENERS OR WELDS (SPACED MAX. 24" O.C.) (SEE NOTE NO. 1 BELOW).
4. STEEL STUDS (MIN. 2-1/2" WIDE), CUT 1/2" TO 3/4" LESS IN LENGTH THAN ASSEMBLY HEIGHT, NESTING IN CEILING RUNNER WITHOUT ATTACHMENT.
5. HILTI CP 777 SPEED PLUGS FRICTION FITTED TO COMPLETELY FILL FLUTE, RECESSED 1/2" ON EACH SIDE OF WALL TO ACCOMMODATE FIRESTOP SEALANT (SEE NOTE NO. 2 BELOW).
6. MINERAL WOOL SAFING (MIN. 4 PCF DENSITY), COMPRESSED 50% AND INSERTED INTO JOINT, RECESSED 1/2" ON EACH SIDE OF WALL TO ACCOMMODATE FIRESTOP SEALANT.
7. MINIMUM 1/2" DEPTH HILTI CP 606 FLEXIBLE FIRESTOP SEALANT ON BOTH SIDES OF A GYPSUM WALL ASSEMBLY.

NOTES : 1. AS AN ALTERNATE TO CEILING RUNNER IN ITEM NO. 3, CEILING RUNNERS, MANUFACTURED BY BRADY CONSTRUCTION INNOVATIONS, INC., DBA SLIPTRACK SYSTEMS, METAL-LITE, TOTAL STEEL SOLUTIONS, THE STEEL NETWORK, INC., CEMCO, CLARKWESTERN BUILDING SYSTEM, INC., SCAFCO, OR OLMAR SUPPLY, INC., MAY BE USED. WHEN ALTERNATE CEILING TRACKS ARE USED, CONSULT THE UL FIRE RESISTANCE DIRECTORY FOR INSTALLATION INSTRUCTIONS.

2. AS AN ALTERNATE TO HILTI CP 777 SPEED PLUGS, MINERAL WOOL SAFING (MIN. 4 PCF DENSITY) COMPRESSED 20% MAY BE USED.

3. WHEN EPIC METALS DECK IS USED, MINERAL WOOL IS TO BE TIGHTLY PACKED INTO THE INVERTED FLUTES, FLUSH WITH BOTH SIDES OF WALL. ADDITIONALLY, WHEN EPIC METALS "TORIS C" DECK IS USED MINERAL WOOL IS TO BE COMPRESSED 25% TO FILL RECESSED INDENTATION ABOVE CEILING RUNNER.



Hilti Firestop Systems

HILTI, Inc.
Plano, Texas USA (800) 879-8000

Sheet	2 of 2
Scale	-
Date	Aug. 27, 2024

Drawing No.

**HWD
0045q**

Saving Lives through Innovation and Education