

FIRE-RATED JOINT THROUGH CONCRETE FLOOR ASSEMBLY

F-RATING = 2-HR.

CLASS II MOVEMENT CAPABILITIES - 7% COMPRESSION OR EXTENSION

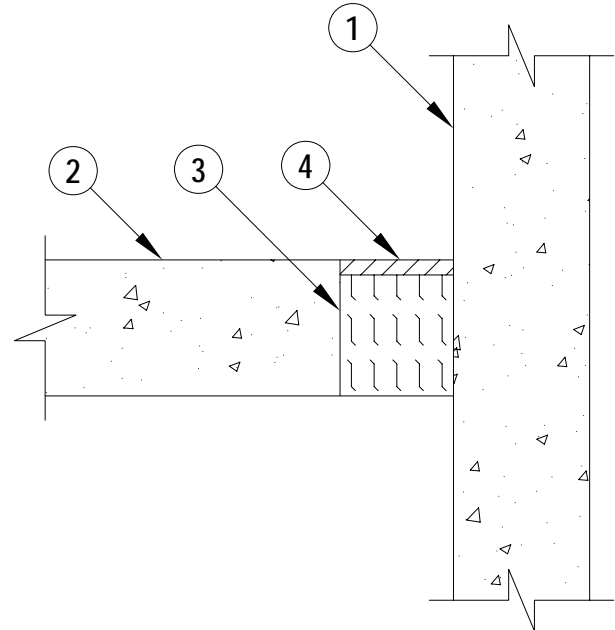
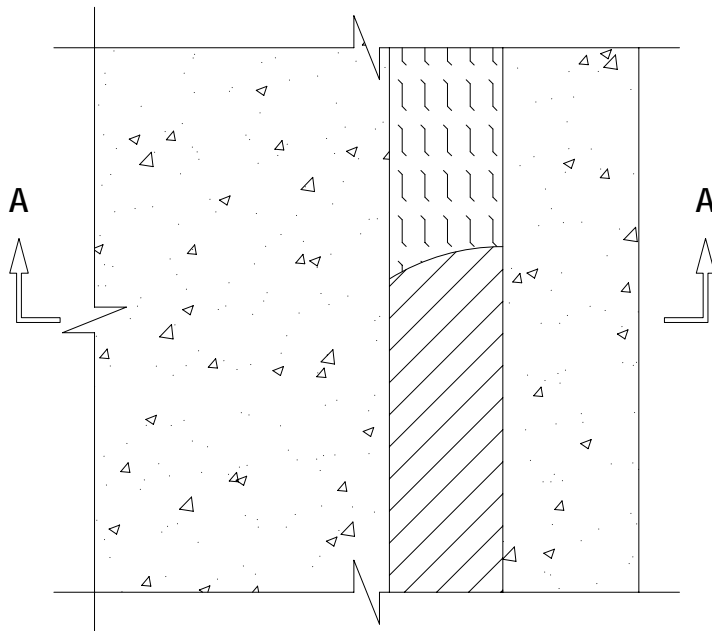
L-RATING AT AMBIENT - LESS THAN 1 CFM/LINEAR FOOT

L-RATING AT 400°F - LESS THAN 1 CFM/LINEAR FOOT

FWD1012g.061705

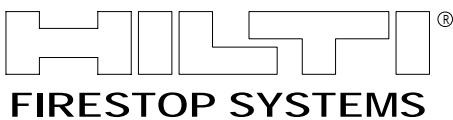
TOP VIEW

SECTION A-A



1. CONCRETE WALL ASSEMBLY (2-HR. FIRE-RATING) :
 - A. LIGHTWEIGHT OR NORMAL WEIGHT CONCRETE WALL (MINIMUM 4-1/2" THICK).
 - B. ANY UL/cUL CLASSIFIED CONCRETE BLOCK WALL.
2. LIGHTWEIGHT OR NORMAL WEIGHT CONCRETE FLOOR (MINIMUM 4-1/2" THICK) (2-HR. FIRE-RATING).
3. MINIMUM 4" THICKNESS MINERAL WOOL (MIN. 4 PCF DENSITY) COMPRESSED MINIMUM 42%.
4. MINIMUM 1/2" DEPTH HILTI CP 606 FLEXIBLE FIRESTOP SEALANT.

NOTE : MAXIMUM WIDTH OF JOINT = 3-3/4".



HILTI, Inc.
Tulsa, Oklahoma USA (918) 252-6000

Sheet	1 of 1
Scale	5/32" = 1"
Date	June 17, 2005

Drawing No.
**FWD
1012g**