

UL SYSTEM NO. F-A-2053

**PLASTIC PIPE THROUGH CONCRETE FLOOR OR CONCRETE OVER METAL DECKING**

F-RATING = 2-HR.

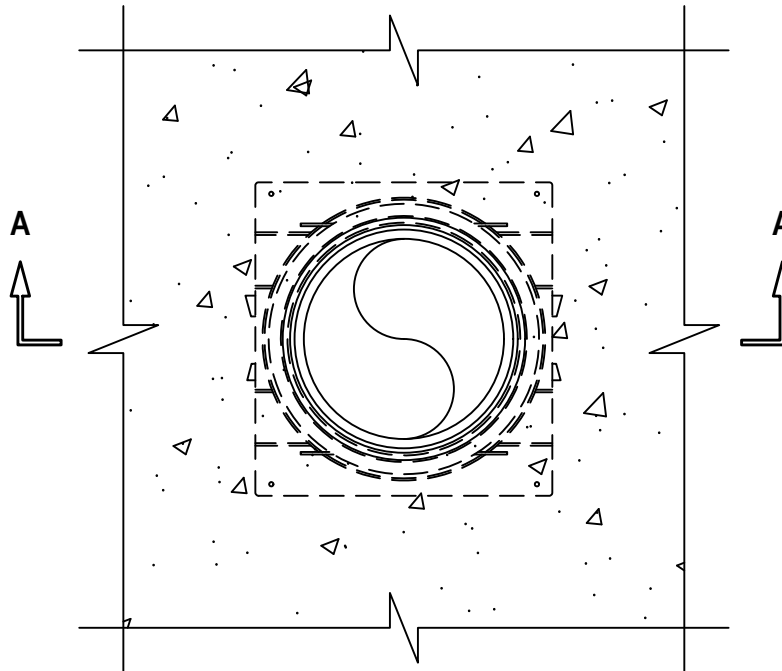
T-RATING = 0-HR.

L-RATING AT AMBIENT = LESS THAN 1 CFM / SQ FT

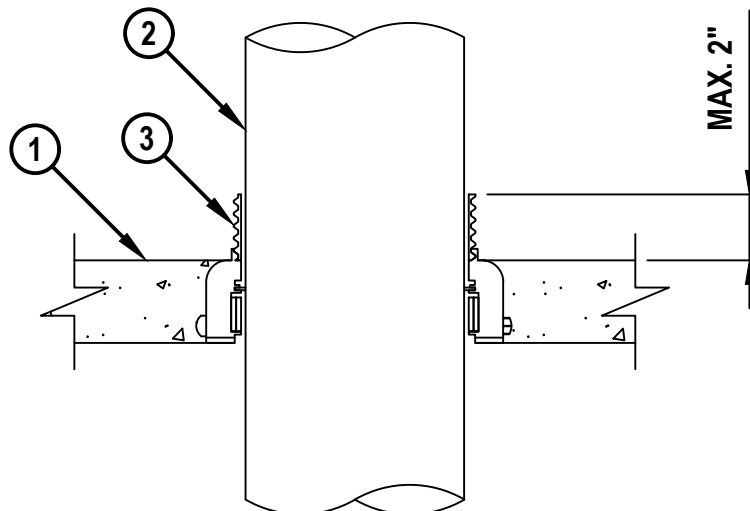
L-RATING AT 400°F = LESS THAN 1 CFM / SQ FT

W-RATING = CLASS I (SEE NOTES NO. 3 AND 4 BELOW)

**TOP VIEW**



**SECTION A-A**



**Hilti Firestop Systems**

HILTI, Inc.  
Plano, Texas USA (800) 879-8000

Sheet	1 of 2
Scale	1 1/4" = 1"
Date	Dec. 02, 2024

Drawing No.

**FA  
2053m**

*Saving Lives through Innovation and Education*

FA2053m.120224

**PLASTIC PIPE THROUGH CONCRETE FLOOR OR CONCRETE OVER METAL DECKING**

F-RATING = 2-HR.

T-RATING = 0-HR.

L-RATING AT AMBIENT = LESS THAN 1 CFM / SQ FT

L-RATING AT 400°F = LESS THAN 1 CFM / SQ FT

W-RATING = CLASS I (SEE NOTES NO. 3 AND 4 BELOW)

FA2053m.120224

1. CONCRETE FLOOR ASSEMBLY (2-HR. FIRE-RATING) :
  - A. LIGHTWEIGHT OR NORMAL WEIGHT CONCRETE FLOOR (MINIMUM 2-1/2" THICK).
  - B. STEEL FLOOR UNIT/FLOOR ASSEMBLY - LIGHTWEIGHT OR NORMAL WEIGHT CONCRETE FLOOR (MINIMUM 2-1/2" THICK) OVER METAL DECKING.
2. PENETRATING ITEM TO BE ONE OF THE FOLLOWING (SEE TABLE BELOW) :
  - A. MAXIMUM 6" NOMINAL DIAMETER PVC PLASTIC PIPE (CELLULAR AND SOLID CORE).
  - B. MAXIMUM 6" NOMINAL DIAMETER CPVC PLASTIC PIPE (CLOSED PIPING SYSTEM ONLY).
  - C. MAXIMUM 6" NOMINAL DIAMETER RIGID NON-METALLIC CONDUIT (RNC).
3. HILTI CP 680-P OR CP 680-PX CAST-IN FIRESTOP DEVICE, CAST OR GROUTED INTO CONCRETE FLOOR (SEE TABLE BELOW).
4. [NOT SHOWN] HILTI IPS OR CPS TOP SEAL PLUG INSTALLED FLUSH WITH TOP SIDE OF DEVICE AROUND NOMINAL PIPE SIZES 1/2" TO 1-1/2". TOP SEALS ARE OPTIONAL ON 1-1/2" DIAMETER PIPES.

NOMINAL PIPE DIAMETER	PRODUCT DESCRIPTION	MAXIMUM EXTENSION OF DEVICE ABOVE FLOOR
1/2" TO 2"	CP 680-P 2" OR CP 680-PX 2"	NOT RESTRICTED
3"	CP 680-P 3" OR CP 680-PX 3"	2"
3" TO 4"	CP 680-P 4"	2"
6"	CP 680-P 6"	2"

- NOTES : 1. CLOSED OR VENTED PIPING SYSTEMS (PVC, RNC = SCH 40; CPVC = SDR 11 OR SDR 13.5).
2. FOR CONCRETE FLOOR OVER METAL DECKING APPLICATIONS, A METAL DECK ADAPTER KIT IS REQUIRED.
3. W-RATING FOR TOP SEAL ONLY APPLIES TO THE IPS TOP SEAL PLUG AND 2" PIPES, AND TO CPS TOP SEAL PLUGS WITH 1/2" TO 2" PIPES.
4. WATER BARRIER MODULE MAY BE THREADED ON TOP OF CAST-IN FIRESTOP DEVICE FOR NOMINAL 2", 3", 4", AND 6" PLASTIC PIPES (LISTED ABOVE). W-RATING WITH WATER BARRIER MODULE ONLY APPLIES WHEN DIAMETER OF PIPE EQUALS SIZE OF MODULE AND WHEN PIPE IS INSTALLED FROM BOTTOM OF DEVICE.
5. L-RATING APPLIES ONLY WHEN DIAMETER OF PIPE EQUALS SIZE OF DEVICE (3" PIPE IN 3" DEVICE, ETC.).



HILTI, Inc.  
Plano, Texas USA (800) 879-8000

Sheet	2 of 2
Scale	-
Date	Dec. 02, 2024

Drawing No.

**FA**  
**2053m**

*Saving Lives through Innovation and Education*