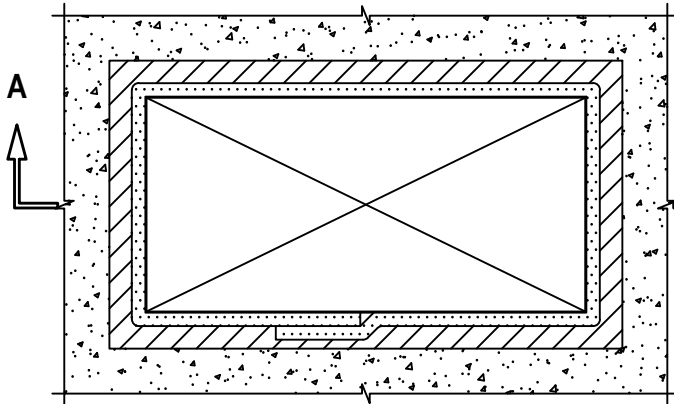


# INSULATED DUCT (THERMAL CERAMICS) THROUGH CONCRETE FLOOR/WALL OR BLOCK WALL ASSEMBLY

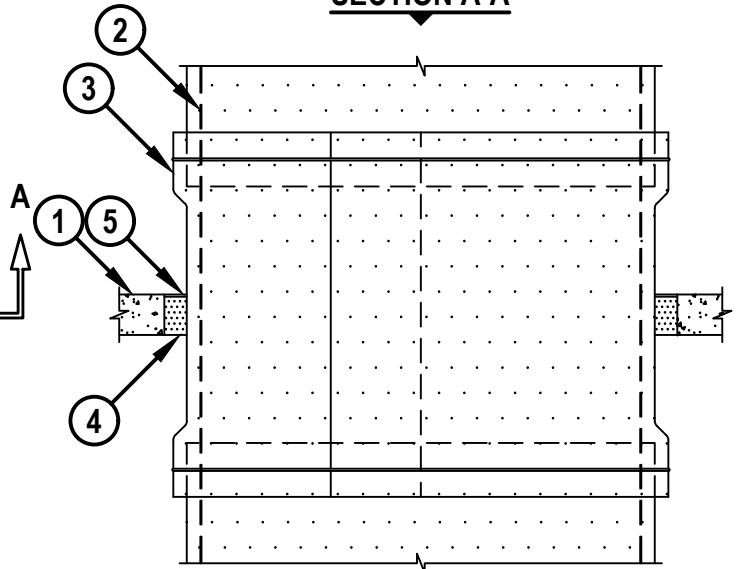
F-RATING = 2-HR.  
T-RATING = 2-HR.

CAJ7098c.050824

TOP VIEW



SECTION A-A



1. CONCRETE FLOOR OR WALL ASSEMBLY (2-HR. FIRE-RATING) :
  - A. LIGHTWEIGHT OR NORMAL WEIGHT CONCRETE FLOOR (MINIMUM 4-1/2" THICK).
  - B. LIGHTWEIGHT OR NORMAL WEIGHT CONCRETE WALL (MINIMUM 4-3/4" THICK).
  - C. ANY UL/cUL CLASSIFIED CONCRETE BLOCK WALL.
2. MAXIMUM 24" x 49" STEEL GREASE DUCT (MINIMUM 0.0600 IN. THICK).
3. NOMINAL 1-1/2" THICK FIREMASTER® FASTWRAP MANUFACTURED BY THERMAL CERAMICS (SEE NOTE NO. 3 BELOW).
4. MINIMUM 4-1/4" THICKNESS UNFACED SCRAP DUCT WRAP MATERIAL TIGHTLY PACKED.
5. MINIMUM 1/4" DEPTH HILTI FS-ONE MAX OR FS-ONE INTUMESCENT FIRESTOP SEALANT.

NOTES : 1. MAXIMUM SIZE OF OPENING = 22.6 SQ. FT., WITH MAXIMUM DIMENSION OF 57".  
 2. ANNULAR SPACE = MINIMUM 1/2", MAXIMUM 4-3/4".  
 3. GREASE DUCT SHALL BE WRAPPED IN ACCORDANCE WITH GREASE DUCT ASSEMBLY NO. G-14.