

**ELECTRICAL BUSWAY THROUGH CONCRETE FLOOR/WALL OR BLOCK WALL**

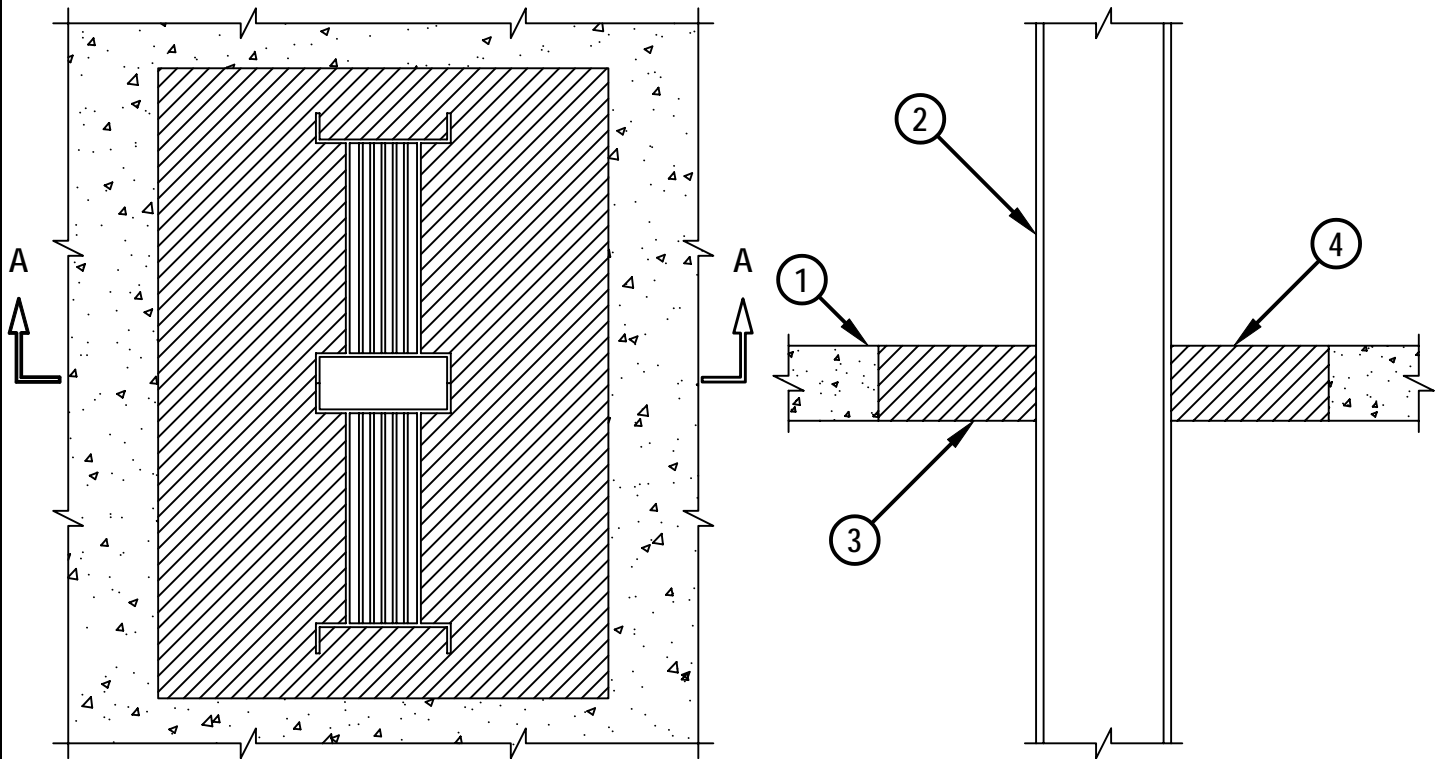
F-RATING = 3-HR.

T-RATING = 0-HR.

CAJ6006j.120601

TOP VIEW

SECTION A-A



1. CONCRETE FLOOR OR WALL ASSEMBLY (3-HR. FIRE-RATING) :
  - A. LIGHTWEIGHT OR NORMAL WEIGHT CONCRETE FLOOR OR WALL (MIN. 2-1/2" THICK).
  - B. ANY UL/ULC CLASSIFIED CONCRETE BLOCK WALL.
2. ELECTRICAL BUSWAY (NOMINAL 23" WIDE x 4-1/2" DEEP, OR SMALLER) ("I" SHAPED ALUMINUM ENCLOSURE CONTAINING FACTORY MOUNTED ALUMINUM BARS RATED FOR 600V, 4000A, OR COPPER BARS RATED FOR 600V, 5000A).
3. FORMING NOT SHOWN. USE RIGID BOARD MATERIAL TO SUPPORT HILTI FS 635 TROWELABLE FIRESTOP COMPOUND OR CP 637 FIRESTOP MORTAR DURING ITS INITIAL CURE (MIN. 24 HRS.).
4. MINIMUM 2-1/2" DEPTH HILTI FS 635 TROWELABLE FIRESTOP COMPOUND OR CP 637 FIRESTOP MORTAR.

NOTES : 1. MAX. AREA OF OPENING IS 560 SQ. IN. WITH A MAX. DIMENSION OF 28".  
 2. MIN. 1" CLEARANCE REQUIRED BETWEEN BUSWAY AND PERIPHERY OF OPENING.

**HILTI®**  
**FIRESTOP SYSTEMS**

HILTI, Inc.  
 Tulsa, Oklahoma USA (918) 252-6000

Sheet	1 of 1
Scale	5/32" = 1"
Date	Dec. 6, 2001

Drawing No.

**CAJ**  
**6006j**

***Saving Lives through Innovation and Education***