

UL SYSTEM NO. F-A-2412  
**PLASTIC PIPE THROUGH CONCRETE FLOOR**

F-RATING = 2-HR. OR 3-HR.

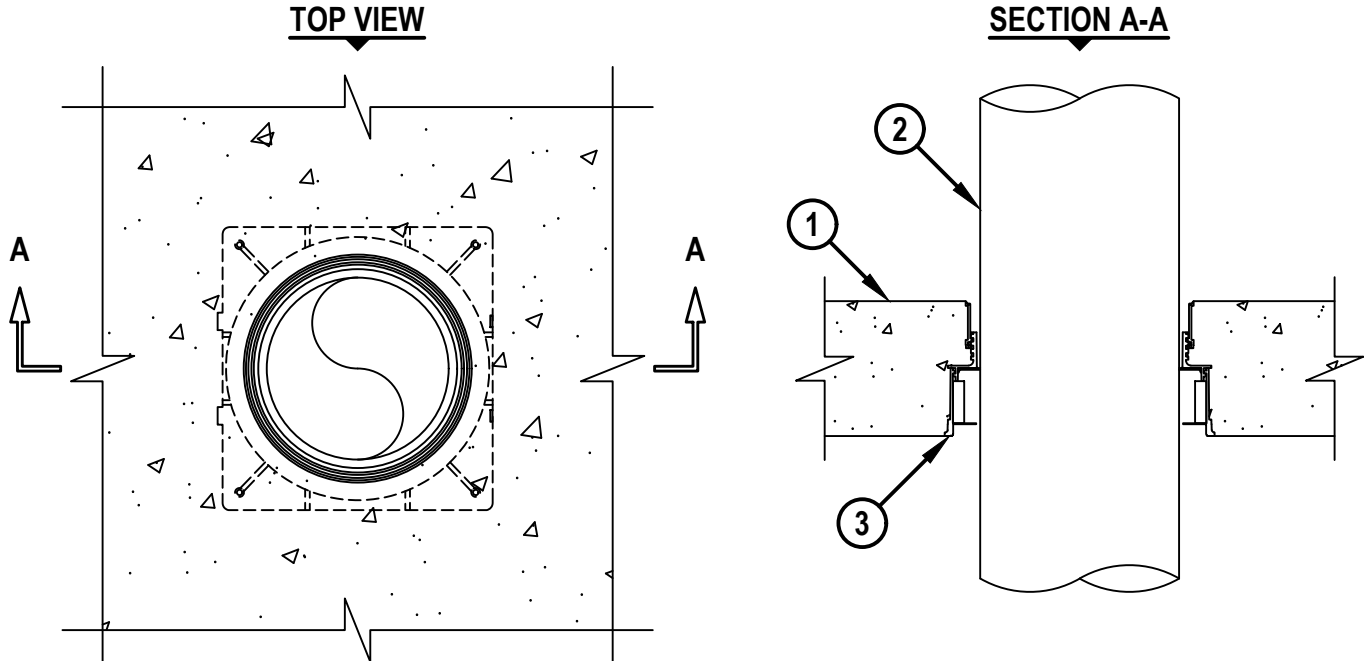
T-RATING = 0-HR.

L-RATING AT AMBIENT = LESS THAN 1 CFM / SQ FT

L-RATING AT 400°F = LESS THAN 1 CFM / SQ FT

W-RATING = CLASS I (SEE TABLE BELOW)

FA2412b.053124



1. LIGHTWEIGHT OR NORMAL WEIGHT CONCRETE FLOOR (MINIMUM 4-1/2" THICK) (3-HR. FIRE-RATING).
2. PENETRATING ITEM TO BE ONE OF THE FOLLOWING (SEE TABLE BELOW) :
  - A. MAXIMUM 4" NOMINAL DIAMETER ABS PLASTIC PIPE (SCHEDULE 40) (CELLULAR AND SOLID CORE).
  - B. MAXIMUM 6" NOMINAL DIAMETER FRPP PLASTIC PIPE (SCHEDULE 40).
3. HILTI CFS-CID U [2", 3", 4", OR 6"] OR CFS-CID U 2" CA CAST-IN FIRESTOP DEVICE CAST OR GROUTED INTO CONCRETE FLOOR (SEE TABLE BELOW).

NOMINAL PIPE DIAMETER	PRODUCT DESCRIPTION	W-RATING*	F-RATING
1-1/4"	CFS-CID U 2", CFS-CID U 2" CA	YES	2-HR.
1-1/2" TO 2"	CFS-CID U 2", CFS-CID U 2" CA	YES	3-HR.
2" TO 3"	CFS-CID U 3"	YES	3-HR.
3" TO 4"	CFS-CID U 4"	YES	3-HR.
6"	CFS-CID U 6"	YES	3-HR.

\*WHEN W-RATING IS REQUIRED - WHEN NOMINAL PIPE DIAMETER MATCHES DEVICE SIZE, PIPE MAY BE INSTALLED IN ANY ORIENTATION. WHEN NOMINAL PIPE DIAMETER IS SMALLER THAN DEVICE SIZE, PIPE MUST BE INSTALLED FROM THE BOTTOM.

**NOTE : CLOSED OR VENTED PIPING SYSTEMS.**

HILTI

Hilti Firestop Systems

HILTI, Inc.  
 Plano, Texas USA (800) 879-8000

Sheet	1 of 1
Scale	5/32" = 1"
Date	May 31, 2024

Drawing No.

FA  
2412b

***Saving Lives through Innovation and Education***