

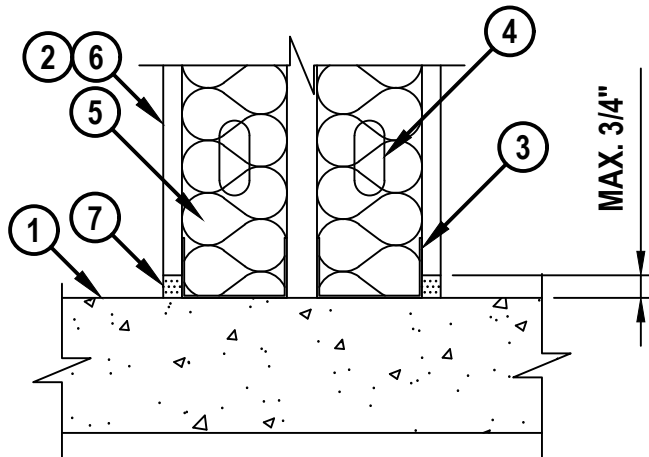
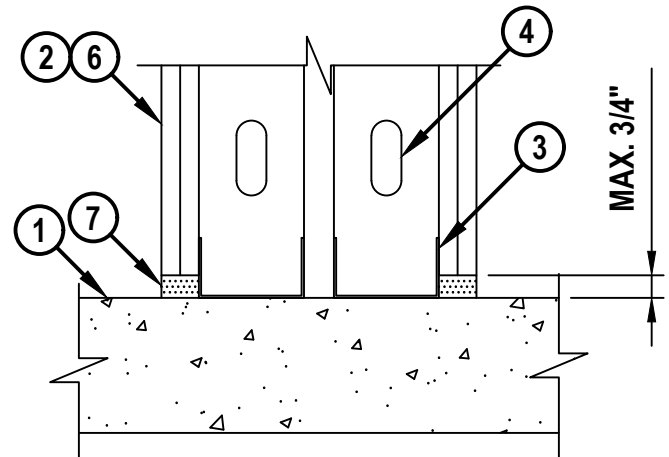
**BOTTOM OF WALL JOINT : GYPSUM WALL ASSEMBLY**

ASSEMBLY RATING = 1-HR. OR 2-HR.

L-RATING AT AMBIENT = LESS THAN 1 CFM / LIN FT

L-RATING AT 400°F = LESS THAN 1 CFM / LIN FT

BWS0069a.072023

**CROSS-SECTIONAL VIEW****CONFIGURATION A****CROSS-SECTIONAL VIEW****CONFIGURATION B****1. CONCRETE FLOOR ASSEMBLY (2-HR. FIRE RATING) :****A. LIGHTWEIGHT OR NORMAL WEIGHT CONCRETE FLOOR (MINIMUM 4-1/2" THICK).****B. ANY UL/cUL CLASSIFIED PRECAST (HOLLOW-CORE) CONCRETE FLOOR (MINIMUM 6" THICK).****C. STEEL FLOOR UNIT/FLOOR ASSEMBLY - LIGHTWEIGHT OR NORMAL WEIGHT CONCRETE FLOOR (MINIMUM 2-1/2" THICK) OVER METAL DECKING.****2. GYPSUM CHASE (DOUBLE STUD) WALL ASSEMBLY (UL/cUL CLASSIFIED U400, V400, OR W400 SERIES) (1-HR. OR 2-HR. FIRE RATING) (1-HR. SHOWN IN CONFIGURATION A, 2-HR. SHOWN IN CONFIGURATION B).****3. FLOOR RUNNER (MIN 25 GA., FLANGE HEIGHT OF FLOOR RUNNER SHALL BE MINIMUM 1-1/4") FASTENED TO TOP SIDE OF CONCRETE FLOOR WITH STEEL FASTENERS (SPACED MAX. 24" OC).****4. STEEL STUDS (MINIMUM 2-1/2" WIDE) CUT 1/2" TO 3/4" LESS IN LENGTH THAN ASSEMBLY HEIGHT WITH BOTTOM NESTING IN, RESTING ON, AND FASTENED TO FLOOR RUNNER.****Hilti Firestop Systems**HILTI, Inc.  
Plano, Texas USA (800) 879-8000

Sheet	1 of 2
Scale	5/32" = 1"
Date	July 20, 2023

Drawing No.

**BWS  
0069a*****Saving Lives through Innovation and Education***

**BOTTOM OF WALL JOINT : GYPSUM WALL ASSEMBLY**

ASSEMBLY RATING = 1-HR. OR 2-HR.

L-RATING AT AMBIENT = LESS THAN 1 CFM / LIN FT

L-RATING AT 400°F = LESS THAN 1 CFM / LIN FT

BWS0069a.072023

**CONFIGURATION A (1-HOUR)**

5. ANY GLASS FIBER INSULATION BEARING THE UL CLASSIFICATION MARKING AS TO FIRE RESISTANCE OR SURFACE BURNING CHARACTERISTICS, OF A WIDTH AND THICKNESS TO COMPLETELY FILL STUD CAVITY. INSULATION BATTS FRICION FIT TO COMPLETELY FILL ALL STUD CAVITIES. SEE BATTS AND BLANKETS (BZJZ) CATEGORY IN THE FIRE RESISTANCE DIRECTORY FOR NAMES OF MANUFACTURERS.
6. NOMINAL 5/8" THICKNESS GYPSUM WALLBOARD AS SPECIFIED IN THE INDIVIDUAL UL DESIGN.
7. HILTI CFS-BTS BOTTOM TRACK SEAL (5/8") SECURED TO STEEL FLOOR RUNNER WITH ADHESIVE BACKING AND RESTING TIGHT TO THE TOP OF THE CONCRETE FLOOR ASSEMBLY PRIOR TO THE INSTALLATION OF GYPSUM BOARD. PRODUCT TO BE COMPRESSED 1/2" AT SEAM LOCATIONS BY COMPRESSING EACH SIDE EVENLY.

**CONFIGURATION B (2-HOUR)**

5. [OPTIONAL - NOT SHOWN] ANY GLASS FIBER INSULATION BEARING THE UL CLASSIFICATION MARKING AS TO FIRE RESISTANCE OR SURFACE BURNING CHARACTERISTICS, OF A WIDTH AND THICKNESS TO COMPLETELY FILL STUD CAVITY. INSULATION BATTS FRICION FIT TO COMPLETELY FILL ALL STUD CAVITIES. SEE BATTS AND BLANKETS (BZJZ) CATEGORY IN THE FIRE RESISTANCE DIRECTORY FOR NAMES OF MANUFACTURERS.
6. TWO LAYERS OF NOMINAL 5/8" THICKNESS GYPSUM WALLBOARD AS SPECIFIED IN THE INDIVIDUAL UL DESIGN.
7. HILTI CFS-BTS BOTTOM TRACK SEAL (1-1/4") SECURED TO STEEL FLOOR RUNNER WITH ADHESIVE BACKING AND RESTING TIGHT TO THE TOP OF THE CONCRETE FLOOR ASSEMBLY PRIOR TO THE INSTALLATION OF GYPSUM BOARD. PRODUCT TO BE COMPRESSED 1/2" AT SEAM LOCATIONS BY COMPRESSING EACH SIDE EVENLY.

NOTE : MAXIMUM WIDTH OF JOINT = 3/4".



Hilti Firestop Systems

HILTI, Inc.  
Plano, Texas USA (800) 879-8000

Sheet	2 of 2
Scale	-
Date	July 20, 2023

Drawing No.

**BWS**  
**0069a**

*Saving Lives through Innovation and Education*