

CONCRETE STAIR ASSEMBLY TO CONCRETE WALL OR BLOCK WALL ASSEMBLY

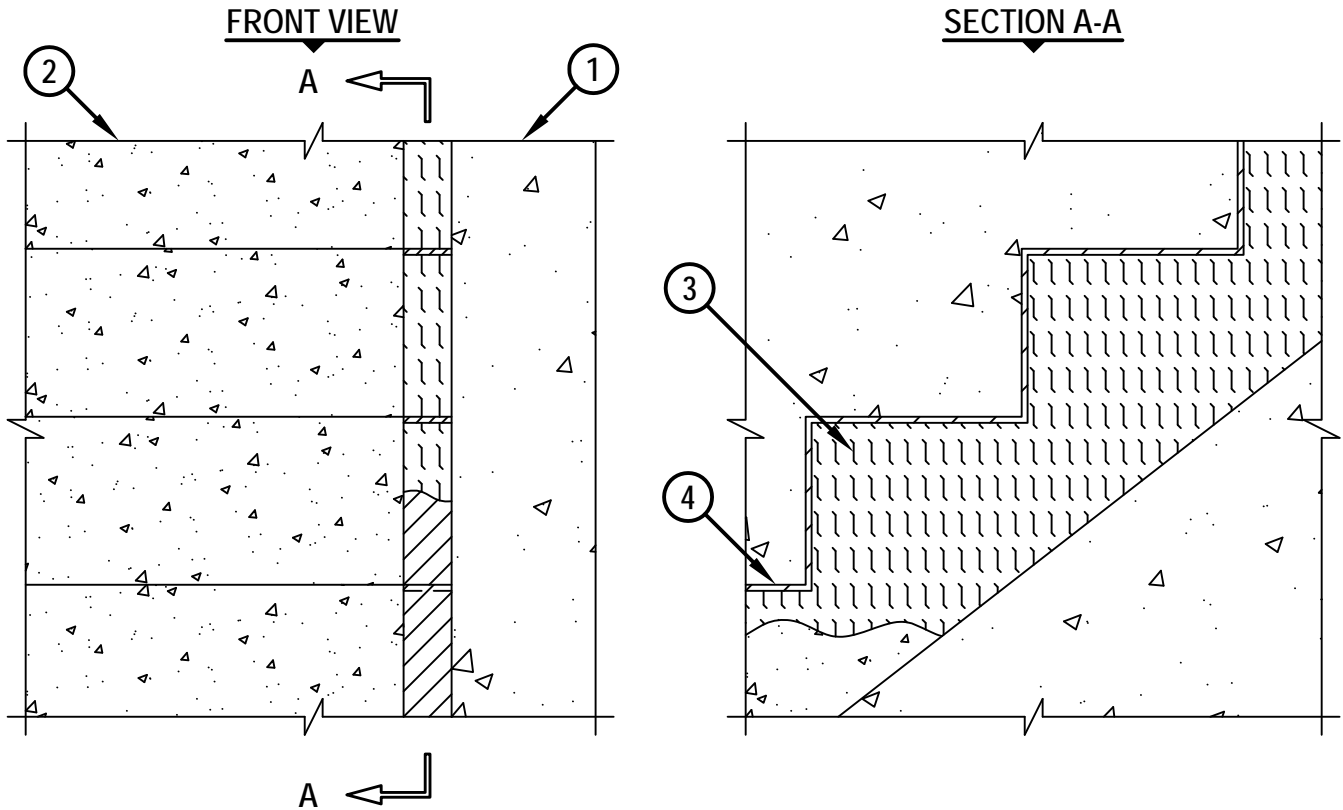
ASSEMBLY RATING = 2-HR.

L-RATING AT AMBIENT = LESS THAN 1 CFM / LIN FT

L-RATING AT 400°F = LESS THAN 1 CFM / LIN FT

CLASS II MOVEMENT CAPABILITIES - 33% COMPRESSION OR EXTENSION

FWD0066a.092313



1. CONCRETE WALL ASSEMBLY (2-HR. FIRE-RATING) :
 - A. LIGHTWEIGHT OR NORMAL WEIGHT CONCRETE WALL (MINIMUM 6" THICK).
 - B. ANY UL/cUL CLASSIFIED CONCRETE BLOCK WALL.
2. LIGHTWEIGHT OR NORMAL WEIGHT CONCRETE STAIR ASSEMBLY (MINIMUM 4-1/2" THICK) (2-HR. FIRE-RATING).
3. MINIMUM 4" THICKNESS MINERAL WOOL SAFING (MIN. 4 PCF DENSITY) COMPRESSED 50% AND RECESSED TO ACCOMMODATE FIRESTOP SEALANT.
4. MINIMUM 1/4" DEPTH HILTI CFS-S SIL GG FIRESTOP SILICONE SEALANT FLUSH WITH TOP SURFACE OF STAIR ASSEMBLY.

NOTES : 1. MAXIMUM WIDTH OF JOINT = 2".
 2. IN ADDITION TO THE SEALANT ON THE TOP SURFACE OF THE FLOOR, HILTI CFS-S SIL GG FIRESTOP SILICONE SEALANT MAY BE INSTALLED FLUSH WITH THE BOTTOM SURFACE OF STAIR ASSEMBLY.



HILTI, Inc.
 Tulsa, Oklahoma USA (800) 879-8000

Sheet	1 of 1
Scale	1/8" = 1"
Date	Sep. 23, 2013

Drawing No.
**FWD
 0066a**