

CFS-MSL GPP PRE-DRYWALL GANGPLATES

Product description

- Stud-mounted gangplates for installing modular fire sleeves before drywall

Product features

- Modular design for easier customization — you can combine fire-rated sleeves in different sizes within one frame
- Can be stacked vertically between studs
- Available for both 16" and 24" on center stud applications
- The 16x4" has usable installation device space of 12x4"
- The 24x4" has an usable device installation space of 21x4"
- Stud-mounted before drywall installation
- Withstands the rigors of usage and time
- Can be installed in wall applications (not for floor applications)
- Buy American Compliant

Areas of application

- Cable and cable bundles
- CFS-MSL GCL Clamps are required for ganging

For use with

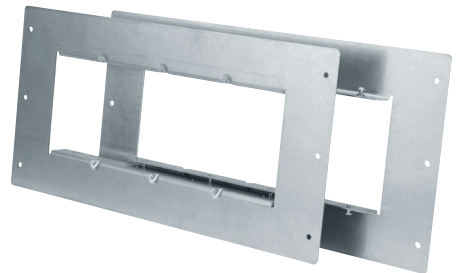
- Gypsum wall systems rated up to 2 hours

Examples

- Electrical wiring
- Premise wiring
- Low voltage and datacom

Installation instructions

- See Hilti literature or third-party listings for complete application and installation details



Technical Data

Device loading area (LxH)	16 x 4" (406 x 102mm)	21 x 4" (534 x 102mm)
Length	16.5" (419mm)	25.5" (648mm)
Width	0.96" (24mm)	0.96" (24mm)
Height	8" (203mm)	8" (203mm)
Temperature resistance	-22 °F to 167 °F (-30 °C to 75 °C)	
Metal	Steel with zinc coating	
Tested in accordance with	UL 1479 ASTM E 814 CAN/ULC-S115	

Firestop Device
FOR USE IN THROUGH
PENETRATION FIRESTOP
SYSTEMS SEE
UL PRODUCT IQ

