

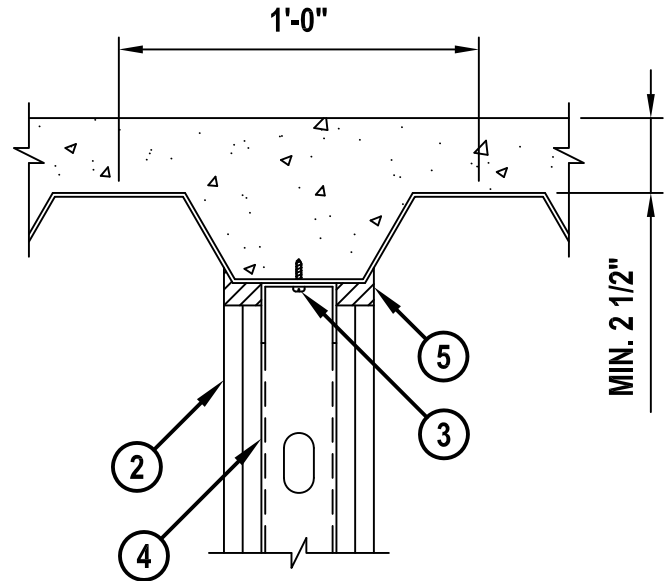
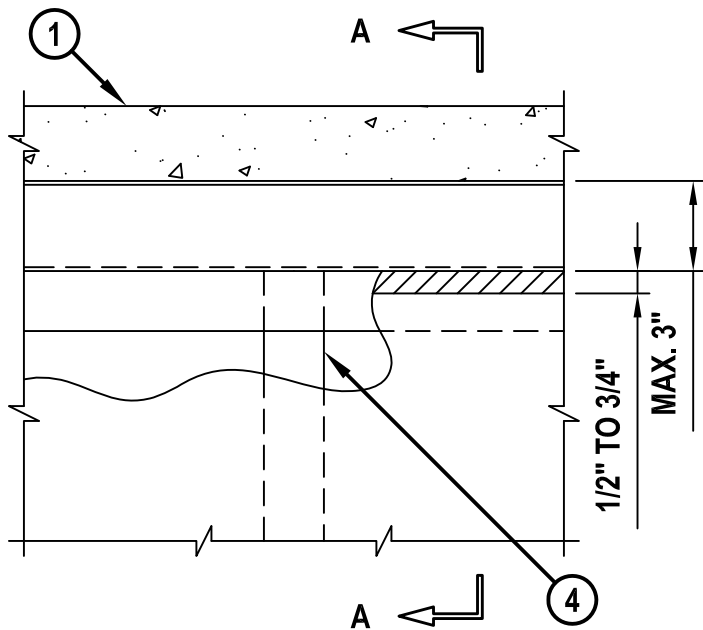
TOP OF WALL JOINT : GYPSUM WALL ASSEMBLY

ASSEMBLY RATING = 1-HR. OR 2-HR. (DEPENDING ON RATING OF WALL AND FLOOR ASSEMBLY)
 L RATING AT AMBIENT = LESS THAN 1 CFM / LIN FT
 L RATING AT 400° F = LESS THAN 1 CFM / LIN FT

HWS0037b.123014

FRONT VIEW

SECTION A-A



1. LIGHTWEIGHT OR NORMAL WEIGHT CONCRETE FLOOR (MIN. 2-1/2" THICK) OVER METAL DECKING (1-HR. OR 2-HR. FIRE-RATING).
2. GYPSUM WALL ASSEMBLY (UL/cUL CLASSIFIED U400 SERIES) (1-HR. OR 2-HR. FIRE-RATING) (2-HR. SHOWN).
3. METAL DEFLECTION TRACK FASTENED TO UNDERSIDE OF THE DECK. DEFLECTION TRACK SHALL HAVE 2" FLANGES AND CONSIST OF A SINGLE TRACK OR NESTED DOUBLE TRACK SYSTEM CAPABLE OF UNRESTRICTED MOVEMENT AS REQUIRED BY DESIGNER.
4. STEEL STUDS TO BE MIN. 2-1/2" WIDE. STUD SPACING SHOULD NOT EXCEED 24" CENTER TO CENTER.
5. HILTI FS-ONE MAX OR FS-ONE FIRESTOP SEALANT :
 - A. MINIMUM 5/8" DEPTH ON BOTH SIDES OF WALL, FOR A 1-HR. FIRE-RATING.
 - B. MINIMUM 1-1/4" DEPTH ON BOTH SIDES OF WALL, FOR A 2-HR. FIRE-RATING.



HILTI, Inc.
 Tulsa, Oklahoma USA (800) 879-8000

Sheet	1 of 1
Scale	5/32" = 1"
Date	Dec. 30, 2014

Drawing No.
**HWS
 0037b**