

UL/cUL SYSTEM NO. HW-D-0925

TOP OF WALL JOINT : GYPSUM WALL ASSEMBLY

ASSEMBLY RATING = 1-HR. OR 2-HR.

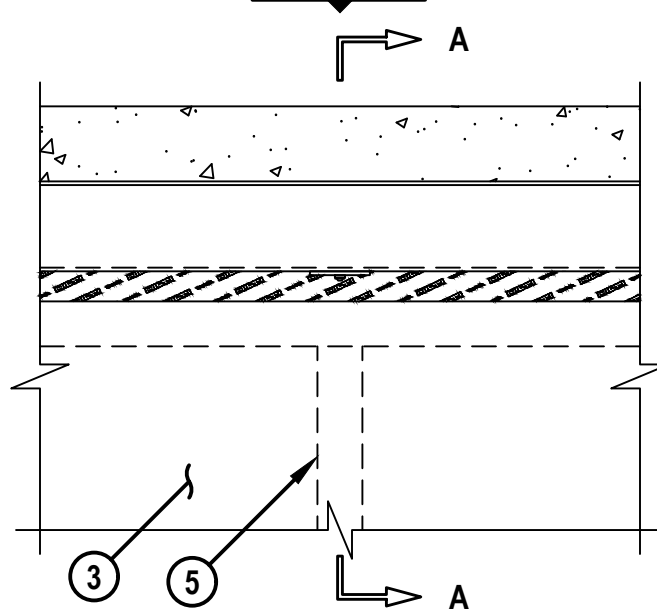
L-RATING AT AMBIENT = 1 CFM / LIN FT

L-RATING AT 400°F = LESS THAN 1 CFM / LIN FT

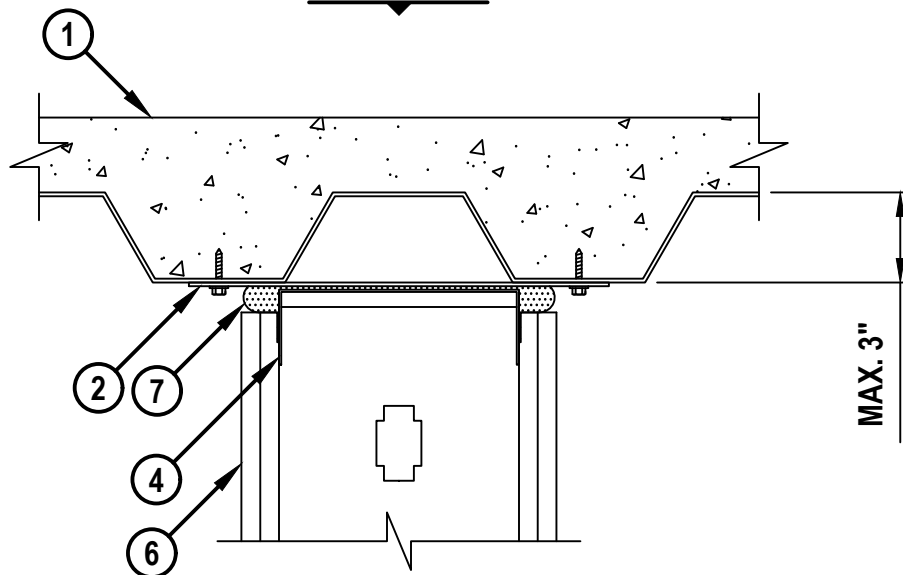
CLASS II AND III MOVEMENT CAPABILITIES - 62% OR 86% COMPRESSION OR EXTENSION OR
92% COMPRESSION ONLY (SEE TABLE BELOW)

HWD0925b.100424

FRONT VIEW



SECTION A-A



1. LIGHTWEIGHT OR NORMAL WEIGHT CONCRETE FLOOR (MINIMUM 2-1/2" THICK) OVER METAL DECKING ASSEMBLY (UL/cUL CLASSIFIED). THE HOURLY FIRE RATING OF THE FLOOR ASSEMBLY SHALL BE EQUAL TO OR GREATER THAN THE HOURLY RATING OF THE WALL ASSEMBLY.



Hilti Firestop Systems

HILTI, Inc.
Plano, Texas USA (800) 879-8000

Sheet	1 of 2
Scale	5/32" = 1"
Date	Oct. 04, 2024

Drawing No.

**HWD
0925b**

Saving Lives through Innovation and Education

TOP OF WALL JOINT : GYPSUM WALL ASSEMBLY

ASSEMBLY RATING = 1-HR. OR 2-HR.

L-RATING AT AMBIENT = 1 CFM / LIN FT

L-RATING AT 400°F = LESS THAN 1 CFM / LIN FT

CLASS II AND III MOVEMENT CAPABILITIES - 62% OR 86% COMPRESSION OR EXTENSION OR
92% COMPRESSION ONLY (SEE TABLE BELOW)

HWD0925b.100424

2. MINIMUM 2" WIDE x 10" LONG, 20 GA. STEEL STRAPS TO SPAN THE FLUTE AND OVERLAP THE VALLEYS. STEEL STRAPS SPACED MAX 24" OC AND FASTENED TO DECK WITH A MINIMUM OF 1-1/4" LONG MASONRY ANCHOR OR A MINIMUM OF 1-1/4" LONG STEEL FASTENER ON EACH SIDE OF FLUTE.
3. GYPSUM WALL ASSEMBLY (UL/cUL CLASSIFIED U400, V400 OR W400 SERIES) (1-HR. OR 2-HR. FIRE-RATING) (2-HR. SHOWN). THE HOURLY RATING OF THE JOINT SYSTEM IS DEPENDENT UPON THE HOURLY RATING OF THE WALL ASSEMBLY.
4. CEILING RUNNER (MIN. 25 GA., FLANGE HEIGHT OF CEILING RUNNER SHALL BE MINIMUM 2-1/2" SLOTTED LEGS SIZED TO ACCOMMODATE STEEL STUDS. CENTERED UNDER STEEL DECK FLUTE WITH A MINIMUM 7/8" OVERLAP OF CEILING RUNNER TO THE VALLEY OF THE FLUTED DECK. CEILING RUNNER TO BE FASTENED TO STEEL STRAPS WITH TWO MIN NO. 10 x 3/4" STEEL SCREWS (SPACED MAXIMUM 24" OC) (SEE NOTE BELOW).
5. STEEL STUDS (MIN. 6" WIDE FOR 1-1/2" DEEP FLUTED FLOOR DECKS) (MIN. 8" WIDE FOR 2" AND 3" DEEP FLUTED FLOOR DECKS) CUT 3/4" TO 1" LESS IN LENGTH THAN ASSEMBLY HEIGHT WITH BOTTOM NESTING IN CEILING RUNNER WITHOUT ATTACHMENT.
6. 5/8" OR 1-1/4" THICKNESS GYPSUM WALLBOARD AS SPECIFIED IN THE INDIVIDUAL UL DESIGN. TOP ROW OF SCREWS SHALL BE INSTALLED INTO STUD 3-1/2" TO 5-1/2" BELOW THE BOTTOM EDGE OF THE CEILING RUNNER.
7. HILTI CFS-TTS MD OS OR CFS-TTS MD 600 FIRESTOP TOP TRACK SEAL INSTALLED OVER CEILING RUNNER PRIOR TO ATTACHMENT TO UNDERSIDE OF STEEL STRAPS IN ACCORDANCE WITH THE ACCOMPANYING INSTALLATION INSTRUCTIONS.

MAX NOM JOINT WIDTH	MAX MOVEMENT CAPABILITIES		MAX MOVEMENT
7/8"	COMPRESSION	86%	3/4"
	EXTENSION	86%	3/4"
1"	COMPRESSION	62%	5/8"
	EXTENSION	62%	5/8"
1-5/8"	COMPRESSION	92%	1-1/2"
	EXTENSION	0%	0"

AS AN ALTERNATIVE TO THE MOVEMENT PERCENTAGES ABOVE, THE JOINT SYSTEM MAY MOVE FREELY WITHOUT RESTRICTION TO THE PERCENTAGE OF MOVEMENT WITHIN THE RANGE OF A MIN 1/8" TO MAX 1-5/8" JOINT WIDTH.

NOTE : AS AN ALTERNATE TO CEILING RUNNER IN ITEM 4, SLOTTED CEILING RUNNERS MAY BE USED. CONSULT THE UL FIRE RESISTANCE DIRECTORY FOR APPROVED MANUFACTURERS.



HILTI, Inc.
Plano, Texas USA (800) 879-8000

Sheet	2 of 2
Scale	-
Date	Oct. 04, 2024

Drawing No.

HWD
0925b

Saving Lives through Innovation and Education