

UL/cUL SYSTEM NO. HW-D-0923

TOP OF WALL JOINT : GYPSUM WALL ASSEMBLY

ASSEMBLY RATING = 1-HR. OR 2-HR.

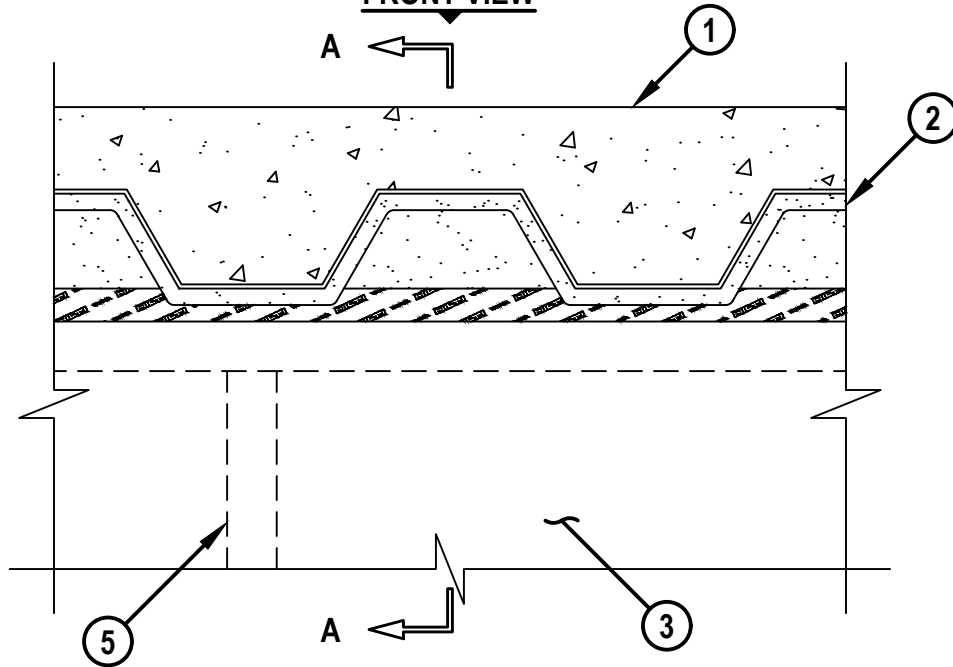
L-RATING AT AMBIENT = LESS THAN 1 CFM / LIN FT

L-RATING AT 400°F = LESS THAN 1 CFM / LIN FT

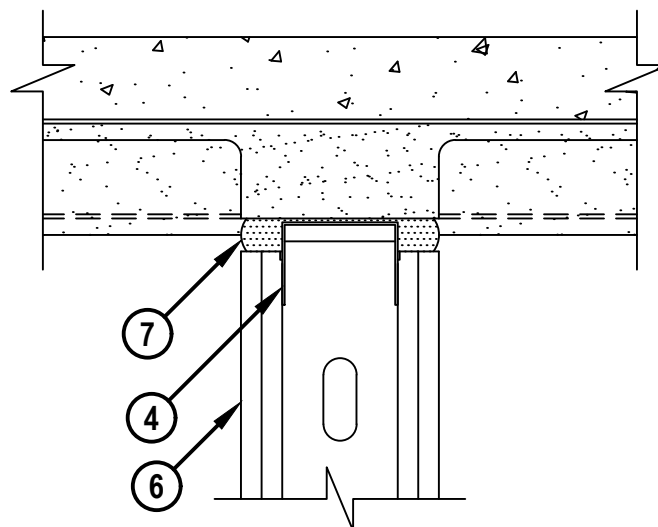
CLASS II AND III MOVEMENT CAPABILITIES - 50% COMPRESSION OR EXTENSION OR
66% COMPRESSION ONLY

HWD0923a.061121

FRONT VIEW



SECTION A-A



Hilti Firestop Systems

HILTI, Inc.
Plano, Texas USA (800) 879-8000

Sheet	1 of 2
Scale	11/64" = 1"
Date	June 11, 2021

Drawing No.

**HWD
0923a**

Saving Lives through Innovation and Education

TOP OF WALL JOINT : GYPSUM WALL ASSEMBLY

ASSEMBLY RATING = 1-HR. OR 2-HR.

L-RATING AT AMBIENT = LESS THAN 1 CFM / LIN FT

L-RATING AT 400°F = LESS THAN 1 CFM / LIN FT

CLASS II AND III MOVEMENT CAPABILITIES - 50% COMPRESSION OR EXTENSION OR
66% COMPRESSION ONLY

HWD0923a.061121

1. LIGHTWEIGHT OR NORMAL WEIGHT CONCRETE FLOOR (MINIMUM 2-1/2" THICK) OVER METAL DECKING ASSEMBLY (UL/CUL CLASSIFIED). THE HOURLY FIRE RATING OF THE FLOOR ASSEMBLY SHALL BE EQUAL TO OR GREATER THAN THE HOURLY RATING OF THE WALL ASSEMBLY.
2. UL CLASSIFIED MONOKOTE TYPE MK-6/HY (MANUFACTURED BY GCP APPLIED TECHNOLOGIES) OR TYPE 300 (MANUFACTURED BY ISOLATEK, INT.) FIREPROOFING SPRAYED TO THE THICKNESS SPECIFIED IN THE INDIVIDUAL D700 SERIES DESIGN. FIREPROOFING TO COMPLETELY FILL FLUTES ABOVE AND EXTENDING THE WIDTH OF THE WALL.
3. GYPSUM WALL ASSEMBLY (UL/CUL CLASSIFIED U400, V400 OR W400 SERIES) (1-HR. OR 2-HR. FIRE-RATING) (2-HR. SHOWN). GYPSUM WALL ASSEMBLY MAY BE CONSTRUCTED PERPENDICULAR TO THE DIRECTION OF THE FLUTED STEEL DECK, OR PARALLEL TO, AND IS TO BE CENTERED UNDER VALLEY OF FLUTED DECK (PERPENDICULAR SHOWN). THE HOURLY RATING OF THE JOINT SYSTEM IS DEPENDENT UPON THE HOURLY RATING OF THE WALL ASSEMBLY.
4. CEILING RUNNER (MIN. 25 GA., FLANGE HEIGHT OF CEILING RUNNER SHALL BE MINIMUM 1/4" GREATER THAN MAXIMUM EXTENDED JOINT WIDTH) FASTENED TO UNDERSIDE OF FLOOR WITH MASONRY ANCHORS OR STEEL FASTENERS (SPACED MAXIMUM 24" OC) (SEE NOTE NO. 2 BELOW).
5. STEEL STUDS (MIN. 3-5/8" WIDE) CUT 3/4" LESS IN LENGTH THAN ASSEMBLY HEIGHT WITH BOTTOM NESTING IN CEILING RUNNER WITHOUT ATTACHMENT (SEE NOTE NO. 4 BELOW).
6. 5/8" OR 1-1/4" THICKNESS GYPSUM WALLBOARD AS SPECIFIED IN THE INDIVIDUAL UL DESIGN. TOP ROW OF SCREWS SHALL BE INSTALLED INTO STUD 2-1/2" TO 4-1/2" BELOW THE BOTTOM EDGE OF THE CEILING RUNNER.
7. HILTI CFS-TTS MD OS OR CFS-TTS MD 600 TOP TRACK SEAL INSTALLED OVER CEILING RUNNER PRIOR TO ATTACHMENT TO UNDERSIDE OF STEEL FLOOR UNIT IN ACCORDANCE WITH THE ACCOMPANYING INSTALLATION INSTRUCTIONS.

NOTES : 1. ALLOWABLE JOINT WIDTHS TO BE DETERMINED AS FOLLOWS :

- A. TO ACCOMMODATE MAX 50% COMPRESSION OR EXTENSION, MAX WIDTH OF JOINT = 1".
- B. TO ACCOMMODATE MAX 66% COMPRESSION ONLY, MAX WIDTH OF JOINT = 1-1/2".
2. CEILING RUNNER TO BE SECURED PRIOR TO APPLICATION OF FIREPROOFING (ITEM 2).
3. AS AN ALTERNATE TO CEILING RUNNER IN ITEM 3, SLOTTED CEILING RUNNERS MAY BE USED. CONSULT THE UL FIRE RESISTANCE DIRECTORY FOR APPROVED MANUFACTURERS.
4. ANY OVERSPRAY OF FIREPROOFING SHALL BE REMOVED FROM FILL, VOID OR CAVITY MATERIAL WHERE GYPSUM BOARD OVERLAPS PRODUCT.

**Hilti Firestop Systems**

HILTI, Inc.
Plano, Texas USA (800) 879-8000

Sheet	2 of 2
Scale	-
Date	June 11, 2021

Drawing No.

**HWD
0923a**
Saving Lives through Innovation and Education