

UL SYSTEM NO. C-AJ-2887

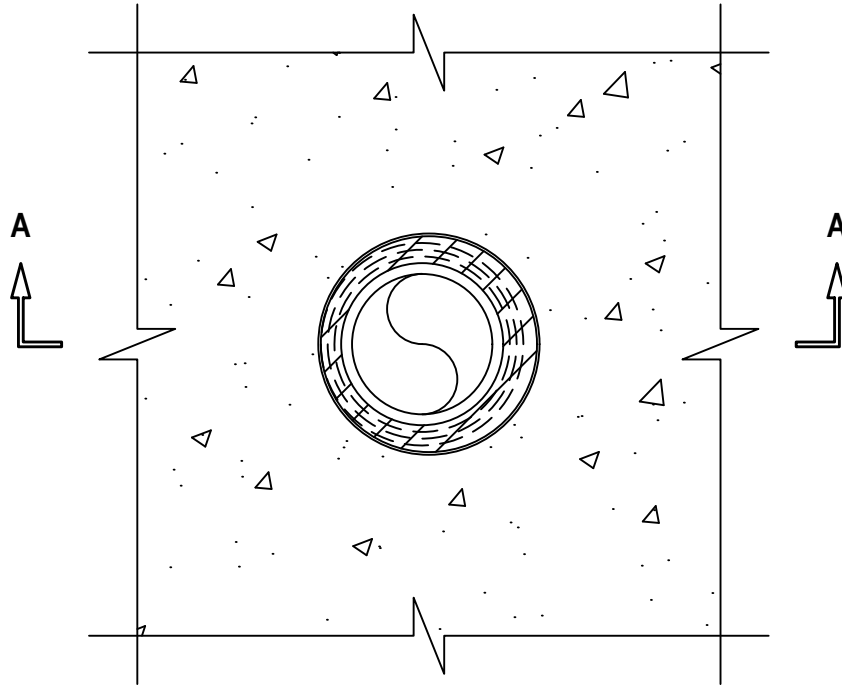
PLASTIC PIPE THROUGH CONCRETE FLOOR/WALL OR BLOCK WALL ASSEMBLY

F-RATING = 2-HR.

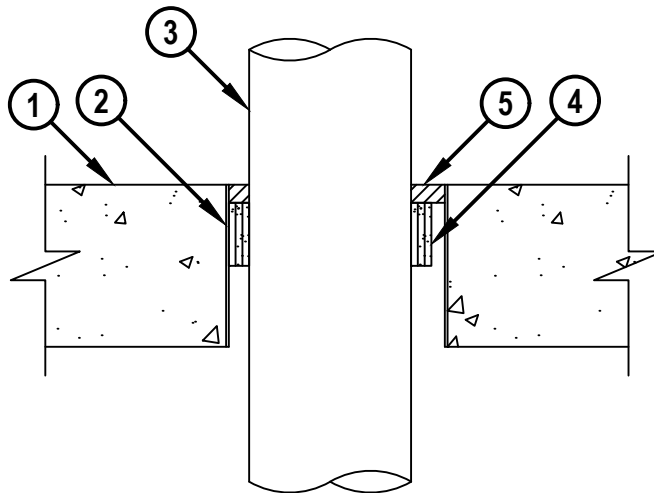
T-RATING = 1/4-HR. OR 2-HR. (SEE NOTE NO. 2 BELOW)

CAJ2887a.012420

TOP VIEW



SECTION A-A



HILTI, Inc.
Plano, Texas USA (800) 879-8000

Sheet	1 of 2
Scale	1 1/64" = 1"
Date	Jan. 24, 2020

Drawing No.
**CAJ
2887a**

Saving Lives through Innovation and Education

PLASTIC PIPE THROUGH CONCRETE FLOOR/WALL OR BLOCK WALL ASSEMBLY

F-RATING = 2-HR.

T-RATING = 1/4-HR. OR 2-HR. (SEE NOTE NO. 2 BELOW)

CAJ2887a.012420

1. CONCRETE FLOOR OR WALL ASSEMBLY (2-HR. FIRE-RATING) :
 - A. LIGHTWEIGHT OR NORMAL WEIGHT CONCRETE FLOOR OR WALL (MINIMUM 4-1/2" THICK).
 - B. ANY UL CLASSIFIED CONCRETE BLOCK WALL.
2. [OPTIONAL] MAXIMUM 6" (MIN. 30 GA.) DIAMETER GALVANIZED STEEL SLEEVE WITH MINIMUM 1-1/2" LAP ALONG LONGITUDINAL SEAM.
3. MAXIMUM 4" (102 mm) NOMINAL DIAMETER HDPE PLASTIC PIPE (SDR 11) (CLOSED OR VENTED PIPING SYSTEM).
4. HILTI CP 648E WRAP STRIP (NOMINAL 3/16" THICK x 1-3/4" WIDE) CONTINUOUSLY WRAPPED AROUND THE OUTER CIRCUMFERENCE OF THE PIPE, IN ACCORDANCE WITH TABLE BELOW, WITH ENDS BUTTED AND HELD IN PLACE WITH TAPE. WRAP STRIP RECESSED 1/2" FROM TOP SURFACE OF CONCRETE FLOOR AND TO ACCOMMODATE FIRESTOP SEALANT.
5. MINIMUM 1/2" DEPTH HILTI FS-ONE MAX INTUMESCENT FIRESTOP SEALANT FLUSH WITH TOP SURFACE OF FLOOR.
6. MINERAL WOOL (NOT SHOWN). WHEN STEEL SLEEVE IS USED AND WHEN THE NOMINAL DIAMETER OF THE PENETRANT EXCEEDS 2", INSTALL MINIMUM 2" THICKNESS OF MINERAL WOOL (MIN. 4 PCF DENSITY) TIGHTLY PACKED INTO OPENING AFTER INSTALLATION OF WRAP STRIP MATERIAL AND RECESSED FROM TOP SURFACE OF FLOOR TO ACCOMMODATE FIRESTOP SEALANT.

MAX PIPE DIAM, IN. (MM)	MAX OPENING DIAM, IN. (MM)	ANNULAR SPACE		NUMBER OF LAYERS
		MIN, IN. (MM)	MAX, IN. (MM)	
2 (51)	3-1/2 (89)	3/8 (10)	3/4 (19)	2
4 (102)	6 (152)	9/16 (18)	1 (25)	3

NOTES : 1. HILTI CP 648E WRAP STRIP AND HILTI FS-ONE MAX INTUMESCENT FIRESTOP SEALANT ARE REQUIRED ON BOTH SIDES OF A WALL.
 2. THE T-RATING IS 2-HR. EXCEPT THAT FOR NOMINAL PENETRANT DIAMETER OF 2" OR LESS, THE T-RATING IS 1/4-HR.



HILTI, Inc.
 Plano, Texas USA (800) 879-8000

Sheet	2 of 2
Scale	-
Date	

Drawing No.
**CAJ
 2887a**