

UL/cUL SYSTEM NO. HW-D-0880

TOP OF WALL JOINT : GYPSUM WALL ASSEMBLY

ASSEMBLY RATING = 1-HR. OR 2-HR.

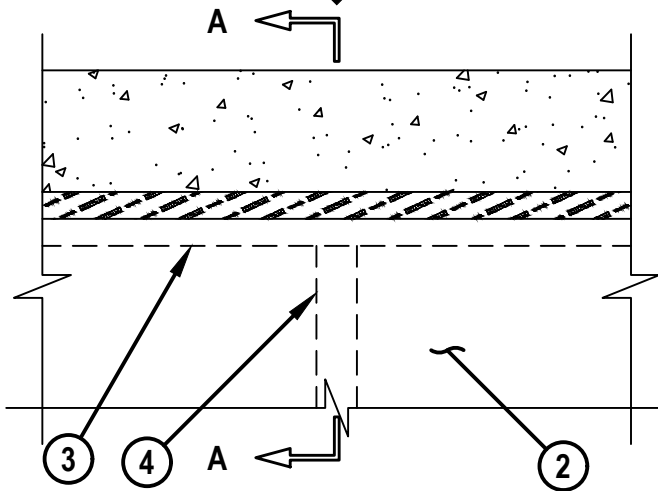
L-RATING AT AMBIENT = 1 CFM / LIN FT

L-RATING AT 400°F = LESS THAN 1 CFM / LIN FT

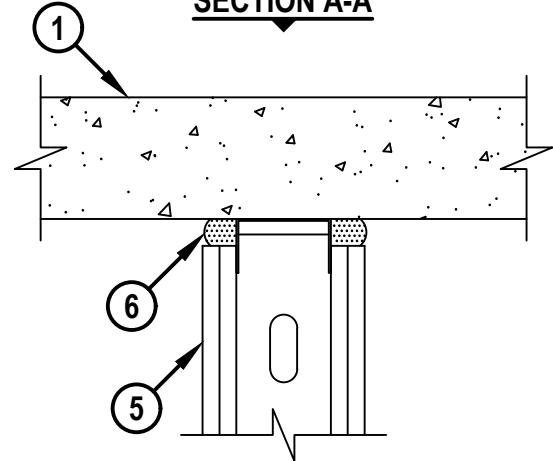
CLASS II AND III MOVEMENT CAPABILITIES - 62% OR 86% COMPRESSION OR EXTENSION OR
92% COMPRESSION ONLY (SEE TABLE BELOW)

HW-D-0880c.100424

FRONT VIEW



SECTION A-A



Hilti Firestop Systems

HILTI, Inc.
Plano, Texas USA (800) 879-8000

Sheet	1 of 2
Scale	9/64" = 1"
Date	Oct. 04, 2024

Drawing No.

**HWD
0880c**

Saving Lives through Innovation and Education

TOP OF WALL JOINT : GYPSUM WALL ASSEMBLY

ASSEMBLY RATING = 1-HR. OR 2-HR.

L-RATING AT AMBIENT = 1 CFM / LIN FT

L-RATING AT 400°F = LESS THAN 1 CFM / LIN FT

CLASS II AND III MOVEMENT CAPABILITIES - 62% OR 86% COMPRESSION OR EXTENSION OR
92% COMPRESSION ONLY (SEE TABLE BELOW)

HWD0880c.100424

1. CONCRETE FLOOR ASSEMBLY (2-HR. FIRE-RATING) :

A. LIGHTWEIGHT OR NORMAL WEIGHT CONCRETE FLOOR (MINIMUM 4-1/2" THICK).

B. ANY UL/cUL CLASSIFIED PRECAST (HOLLOW-CORE) CONCRETE FLOOR (MINIMUM 6" THICK).

2. GYPSUM WALL ASSEMBLY (UL/cUL CLASSIFIED U400 OR V400 SERIES) (1-HR. OR 2-HR. FIRE-RATING) (2-HR. SHOWN).**3. CEILING RUNNER (MIN. 25 GA., FLANGE HEIGHT OF CEILING RUNNER SHALL BE MINIMUM 1/4" GREATER THAN MAXIMUM EXTENDED JOINT WIDTH) FASTENED TO UNDERSIDE OF CONCRETE FLOOR WITH MASONRY ANCHORS OR STEEL FASTENERS (SPACED MAX. 24" OC) (SEE NOTE BELOW).****4. STEEL STUDS (MINIMUM 3-1/2" WIDE) CUT 3/4" TO 1" LESS IN LENGTH THAN ASSEMBLY HEIGHT WITH BOTTOM NESTING IN CEILING RUNNER WITHOUT ATTACHMENT.****5. 5/8" OR 1-1/4" THICKNESS GYPSUM WALLBOARD AS SPECIFIED IN THE INDIVIDUAL UL DESIGN. TOP ROW OF SCREWS SHALL BE INSTALLED INTO STUD 3-1/2" TO 5-1/2" BELOW THE BOTTOM EDGE OF THE CEILING RUNNER.****6. HILTI CFS-TTS MD OS OR CFS-TTS MD 600 TOP TRACK SEAL INSTALLED OVER CEILING RUNNER PRIOR TO ATTACHMENT TO UNDERSIDE OF CONCRETE FLOOR IN ACCORDANCE WITH THE ACCOMPANYING INSTALLATION INSTRUCTIONS.**

MAX NOM JOINT WIDTH	MAX MOVEMENT CAPABILITIES		MAX MOVEMENT
7/8"	COMPRESSION	86%	3/4"
	EXTENSION	86%	3/4"
1"	COMPRESSION	62%	5/8"
	EXTENSION	62%	5/8"
1-5/8"	COMPRESSION	92%	1-1/2"
	EXTENSION	0%	0"

AS AN ALTERNATIVE TO THE MOVEMENT PERCENTAGES ABOVE, THE JOINT SYSTEM MAY MOVE FREELY WITHOUT RESTRICTION TO THE PERCENTAGE OF MOVEMENT WITHIN THE RANGE OF A MIN 1/8" TO MAX 1-5/8" JOINT WIDTH.

NOTE : AS AN ALTERNATE TO CEILING RUNNER IN ITEM 3, SLOTTED CEILING RUNNERS MAY BE USED. CONSULT THE UL FIRE RESISTANCE DIRECTORY FOR APPROVED MANUFACTURERS.

**Hilti Firestop Systems**

HILTI, Inc.
Plano, Texas USA (800) 879-8000

Sheet	2 of 2
Scale	9/64" = 1"
Date	Oct. 04, 2024

Drawing No.

HWD
0880c

Saving Lives through Innovation and Education