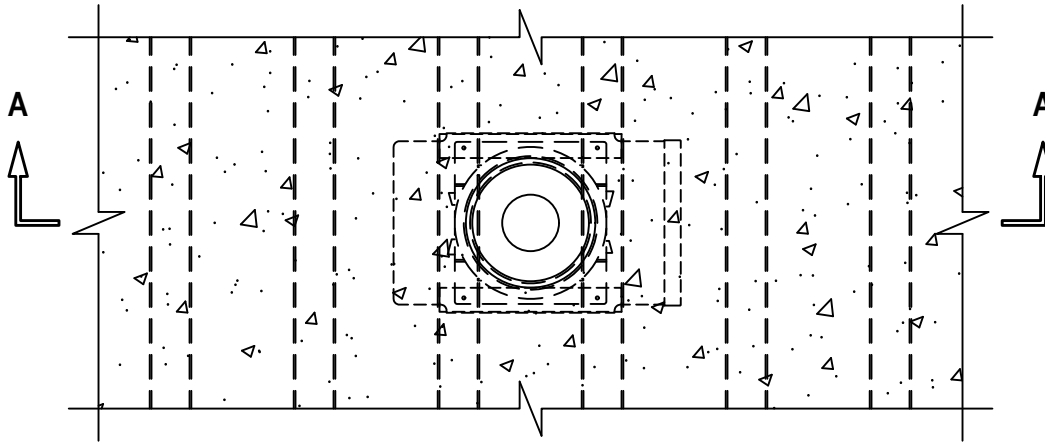
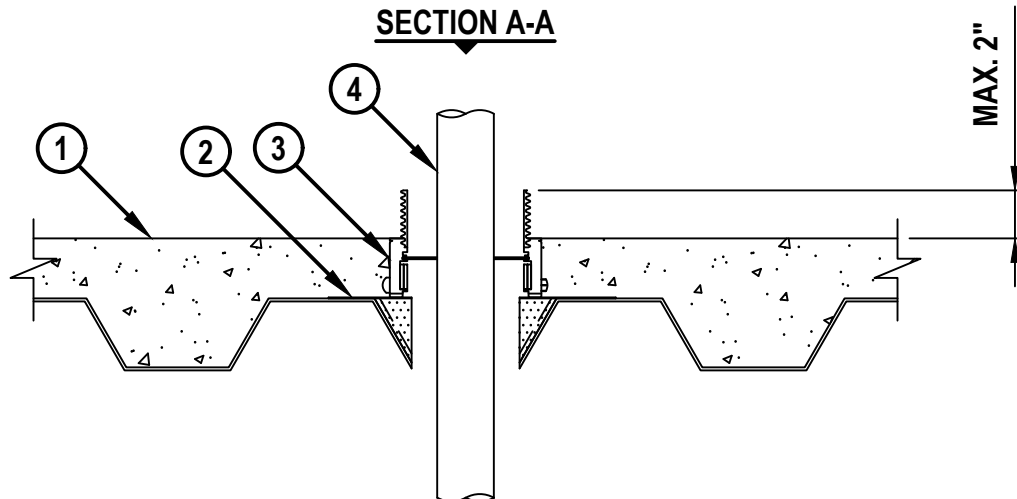


**CABLE BUNDLE THROUGH CONCRETE FLOOR OVER METAL DECKING ASSEMBLY**

F-RATING = 3-HR.

T-RATING = 1/2-HR.

**TOP VIEW****SECTION A-A**

1. LIGHTWEIGHT OR NORMAL WEIGHT CONCRETE FLOOR ASSEMBLY (MINIMUM 2-1/2" THICK) OVER METAL DECKING (UL/cUL CLASSIFIED D900 SERIES) WITH 2" OR 3" FLUTED DECKS (3-HR. FIRE-RATING).
2. HILTI CFS-CID MD PLT [W2" OR W3"] METAL DECK PLATFORM SECURED TO DECK WITH ONE FASTENER IN EACH CORNER (SEE NOTE BELOW).
3. HILTI CFS-CID MD [M, P, OR PX] 2"/2.5" FIRESTOP CAST-IN DEVICE FOR METAL DECK SECURED TO HILTI CFS-CID MD PLT METAL DECK PLATFORM WITH SCREWS.
4. NOMINAL 4/C 500 KCMIL COPPER CONDUCTOR PVC JACKETED ALUMINUM OR STEEL CLAD TEK CABLE.

NOTES: FOR HILTI CFS-CID MD M OR CFS-CID MD P ONLY, AS AN ALTERNATIVE TO CFS-CID MD PLT METAL DECK PLATFORM (ITEM 2), THE HILTI METAL DECK ADAPTOR KIT MAY BE USED.

**Hilti Firestop Systems**

HILTI, Inc.  
Plano, Texas USA (800) 879-8000

Sheet 1 of 1

Scale 1/8" = 1"

Date Sept. 22, 2025

Drawing No.

**FA**  
**3072c**

*Saving Lives through Innovation and Education*