

UL/cUL SYSTEM NO. F-A-8055

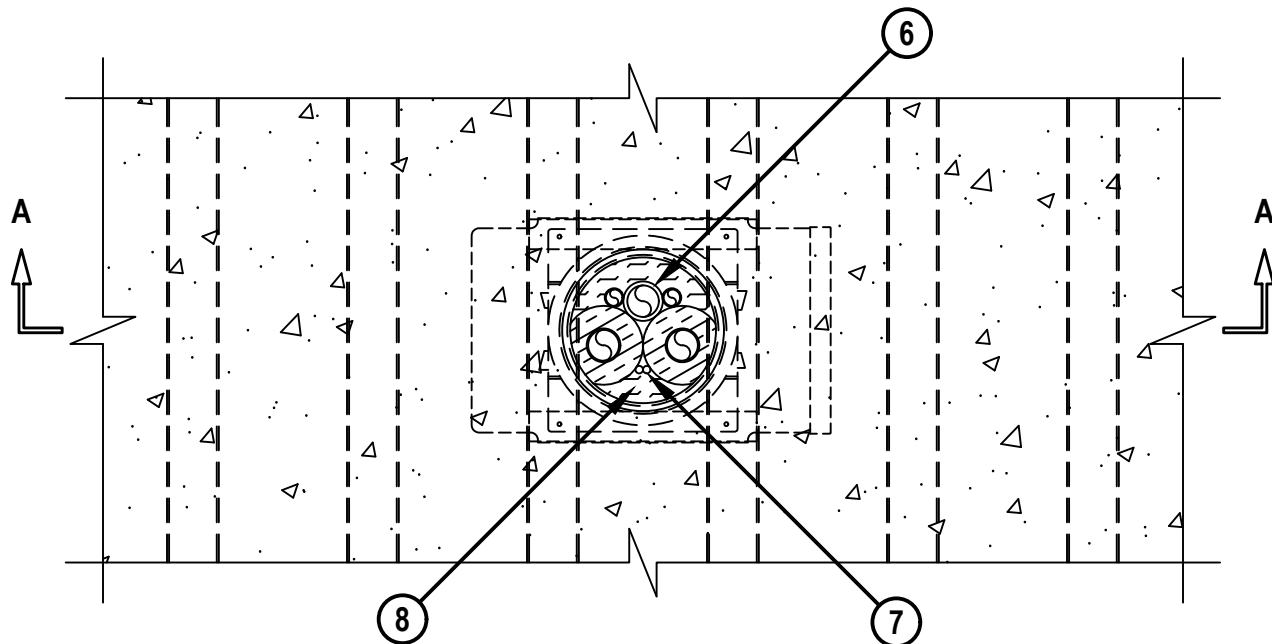
# MULTIPLE HVAC LINE SET THROUGH CONCRETE FLOOR OVER METAL DECKING ASSEMBLY

F-RATING = 3-HR.

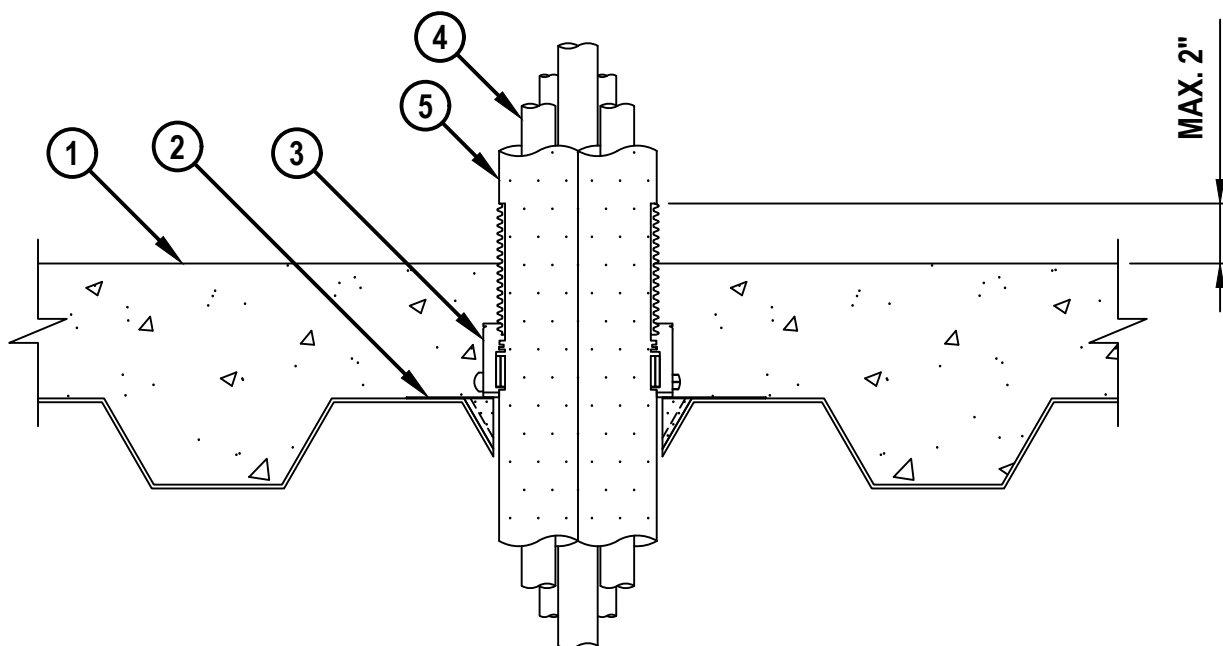
T-RATING = 1/2-HR.

NOTE : TESTED WITH A 2.5 Pa PRESSURE DIFFERENTIAL

TOP VIEW



SECTION A-A



Hilti Firestop Systems

HILTI, Inc.  
Plano, Texas USA (800) 879-8000

Sheet 1 of 2

Scale 5/32" = 1"

Date Sept. 22, 2025

Drawing No.

**FA  
8055d**

*Saving Lives through Innovation and Education*

CAJ0055d.092225

**MULTIPLE HVAC LINE SET THROUGH CONCRETE FLOOR OVER METAL DECKING ASSEMBLY**

F-RATING = 3-HR.

T-RATING = 1/2-HR.

NOTE : TESTED WITH A 2.5 Pa PRESSURE DIFFERENTIAL

CAJ0055d.092225

1. LIGHTWEIGHT OR NORMAL WEIGHT CONCRETE FLOOR (MINIMUM 4-1/2" THICK) OVER METAL DECKING ASSEMBLY (UL/cUL CLASSIFIED D900 SERIES) WITH 2" OR 3" FLUTED DECKS (3-HR. FIRE-RATING).
2. HILTI CFS-CID MD PLT [W2" OR W3"] METAL DECK PLATFORM SECURED TO DECK WITH ONE FASTENER IN EACH CORNER (SEE NOTE BELOW).
3. HILTI CFS-CID MD [M, P, OR PX] [3" OR 4"]/[2.5" OR 4"] FIRESTOP CAST-IN DEVICE FOR METAL DECK WITH EXTENSIONS SECURED TO HILTI CFS-CID MD PLT METAL DECK PLATFORM WITH SCREWS.
4. PENETRATING METALLIC ITEMS TO BE ANY OF THE FOLLOWING (MAX. QTY. = 4) (ONLY TWO PIPES MAY BE LARGER THAN 1/2" DIAMETER).
  - A. MAXIMUM 1" NOMINAL DIAMETER STEEL PIPE (SCHEDULE 10 OR HEAVIER).
  - B. MAXIMUM 1" NOMINAL DIAMETER CAST OR DUCTILE IRON PIPE.
  - C. MAXIMUM 1" NOMINAL DIAMETER COPPER PIPE OR TUBING.
5. NOMINAL 3/4" THICK AB/PVC PIPE INSULATION INSTALLED ON ALL METALLIC PIPES GREATER THAN 1/2" DIAMETER.
6. ANY ONE OF THE FOLLOWING NON-METALLIC ITEMS MAY BE USED :
  - A. MAXIMUM 1-1/4" NOMINAL DIAMETER (SCHEDULE 40) PVC PLASTIC PIPE (SOLID CORE) (CLOSED OR VENTED PIPING SYSTEM).
  - B. MAXIMUM 1-1/4" NOMINAL DIAMETER (SDR 13.5) CPVC PLASTIC PIPE (CLOSED PIPING SYSTEM ONLY).
7. MAXIMUM 4-PAIR NO. 8 AWG THERMOSTAT CABLE WITH PVC JACKET (MAX. QTY. = 2).
8. MINIMUM 2" THICKNESS MINERAL WOOL (MIN. 4 PCF DENSITY) TIGHTLY PACKED INTO THE DEVICE FLUSH WITH TOP SURFACE OF FIRESTOP DEVICE.

NOTES : 1. ANNULAR SPACE BETWEEN PENETRANTS AND DEVICE = MINIMUM 0", MAXIMUM 3/4".  
 2. FOR HILTI CFS-CID MD M OR CFS-CID MD P ONLY, AS AN ALTERNATIVE TO CFS-CID MD PLT METAL DECK PLATFORM (ITEM 2), THE HILTI METAL DECK ADAPTOR KIT MAY BE USED.

**Hilti Firestop Systems**

HILTI, Inc.  
 Plano, Texas USA (800) 879-8000

Sheet 2 of 2

Scale -

Date Sept. 22, 2025

Drawing No.

**FA**  
**8055d**
*Saving Lives through Innovation and Education*