

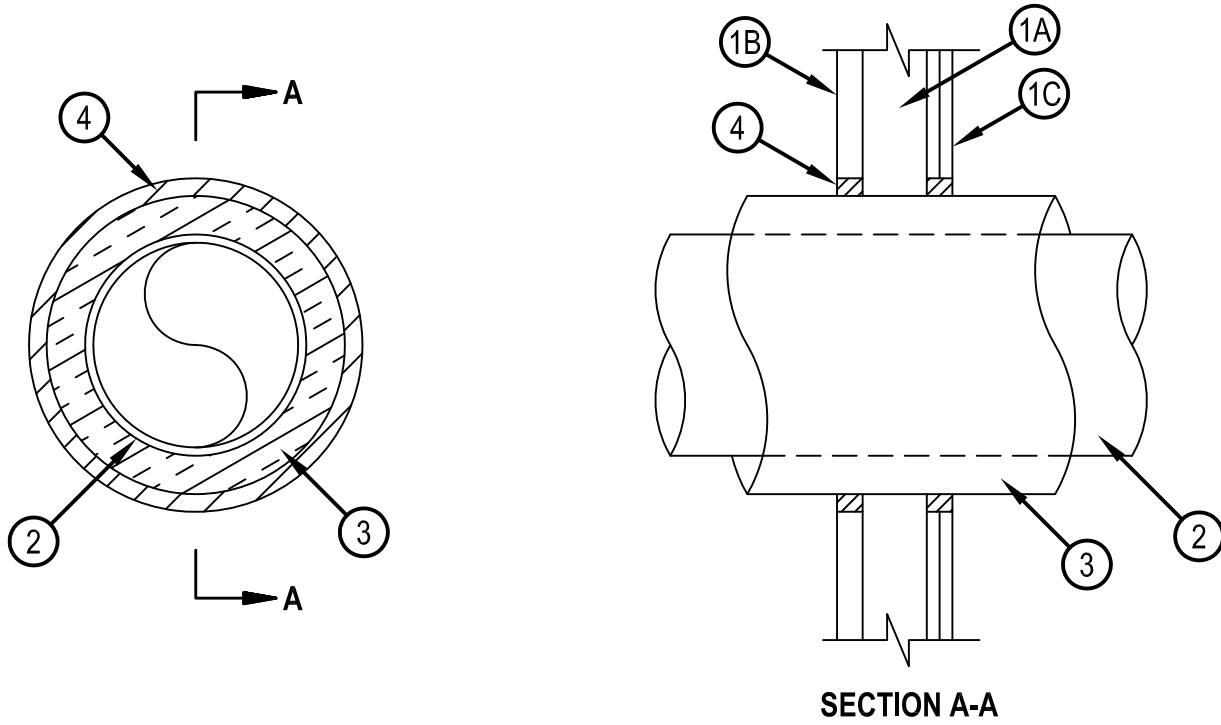


Classified by
Underwriters Laboratories, Inc.
to UL 1479 and CAN/ULC-S115

System No. W-L-5240

WL 5240

ANSI/UL1479 (ASTM E814)	CAN/ULC S115
F Rating — 2 Hr	F Rating — 2 Hr
T Ratings — 0 and 1-1/4 Hr (See Item 3)	FT Ratings — 0 and 1-1/4 Hr (See Item 3)
	FH Rating — 2 Hr
	FTH Ratings — 0 and 1-1/4 Hr (See Item 3)



- Wall Assembly — The 2 hr fire-rated gypsum board/stud shaft wall assembly shall be constructed of the materials and in the manner specified in the individual U400, V400 or W400 Series Wall and Partition Designs in the UL Fire Resistance Directory and shall incorporate the following construction features:
 - Steel Studs — "C-H" or "C-T" shaped studs, min 2-1/2 in. (64 mm) wide by 1-1/2 in. (38 mm) deep, fabricated from min No. 25 gauge galv steel, spaced max 24 in. (610 mm) OC.
 - Gypsum Board* — 1 in. (25 mm) thick, 24 in. (610 mm) wide gypsum liner panels installed vertically. Max diam of circular cutout in gypsum liner panel is 13 in. (330 mm).
 - Gypsum Board* — 1/2 in. or 5/8 in. (13 or 16 mm) thick, 48 in. (1.22 m) wide gypsum boards. The gypsum board type, thickness, number of layers, fastener type and sheet orientation shall be as specified in the individual Wall and Partition Design. Max diam of circular cutout in gypsum board is 13 in.
- Through-Penetrants — One metallic pipe, conduit or tubing to be installed either concentrically or eccentrically within the firestop system. Pipe, conduit or tubing to be rigidly supported on both sides of wall assembly. The following types and sizes of metallic pipes, conduits or tubing may be used:
 - Steel Pipe — Nom 8 in (203 mm) diam (or smaller) Schedule 10 (or heavier) steel pipe.
 - Iron Pipe — Nom 8 in. (203 mm) diam (or smaller) cast or ductile iron pipe.
 - Copper Tubing — Nom 4 in. (102 mm) diam (or smaller) Type L (or heavier) copper tubing.
 - Copper Pipe — Nom 4 in. (102 mm) diam (or smaller) regular (or heavier) copper pipe.



Hilti Firestop Systems

Reproduced by HILTI, Inc. Courtesy of
Underwriters Laboratories, Inc.
January 26, 2015

System No. W-L-5240

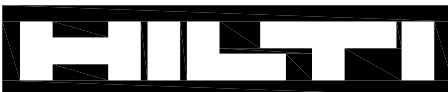
3. Pipe Covering* — Nom 1 or 1-1/2 in. (25 or 38 mm) thick hollow cylindrical heavy density (min. 3.5 pcf or 56 kg/m³) glass fiber units, jacketed on the outside with an all service jacket. Longitudinal joints sealed with metal fasteners or factory-applied SSL tape. Transverse joints secured with metal fasteners or with butt tape supplied with the product. The annular space between the insulated pipe and the periphery of the opening shall be min 1/4 in. (6 mm) to max 1-1/8 in. (29 mm). When 1 in. (25 mm) thick insulation is used, T, FT and FTH Ratings are 1/2 hr. When 1-1/2 in. (38 mm) insulation is used, T, FT and FTH Ratings are 1-1/4 hr.

See Pipe and Equipment Covering — Materials (BRGU) category in the Building Materials Directory for names of manufacturers. Any pipe covering material meeting the above specifications and bearing the UL Classification Marking with a Flame Spread Index of 25 or less and a Smoke Developed Index of 50 or less may be used.

4. Fill, Void or Cavity Material* — Sealant — Min 1 in. (25 mm) thickness of fill material applied within the annulus, flush with each surface of wall.

HILTI CONSTRUCTION CHEMICALS, DIV OF HILTI INC — FS-One Sealant or FS-ONE MAX Intumescent Sealant

* Indicates such products shall bear the UL or cUL Certification Mark for jurisdictions employing the UL or cUL Certification (such as Canada), respectively.



Hilti Firestop Systems

Reproduced by HILTI, Inc. Courtesy of
Underwriters Laboratories, Inc.
January 26, 2015